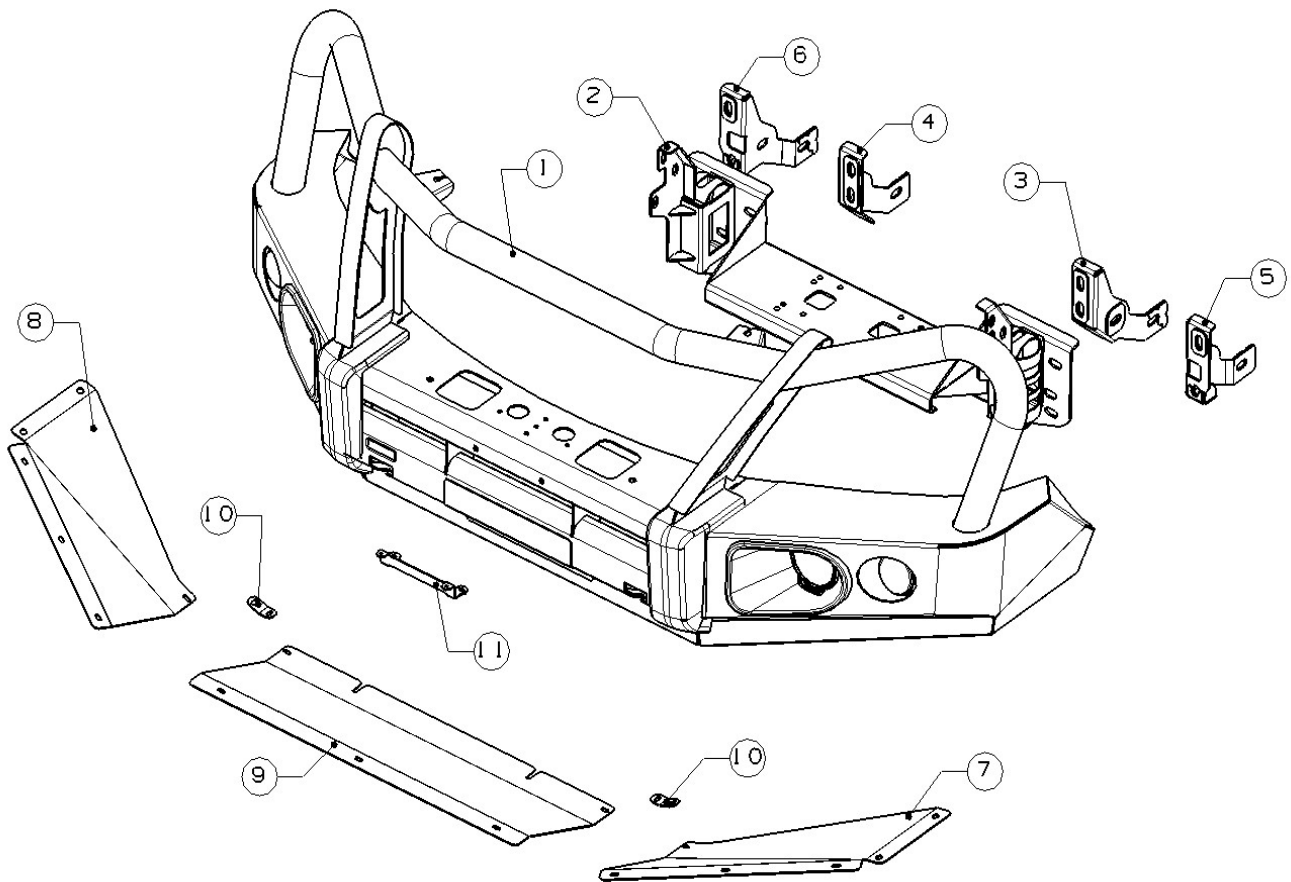


Description :	ELITE BULL BAR TO SUIT 2012-2020 HOLDEN COLORADO
Model :	Holden Colorado 2012-2020
Item NO. :	BBRA-COL12+





NOTE: PLEASE READ BEFORE INSTALLATION.

- All Rockarmor products are manufactured to highest of standards and latest finishes including sand blasting all raw material and e coating to clear the product of any impurities and finished with a tiger coat to keep the longevity if at any stage while off road or on road use this product is damaged or scratched have the damaged surface repaired.
- This product and its fixings must not be modified in any way unless stated in this fitting instruction.
- Do not remove labels from this product.
- Do not use this product for any vehicle other than specified in these instructions.
- It is the installer's responsibility to assure this product is installed correctly allowing enough tolerance for movement between the chassis and body and clearance of all components.
- Use Loctite on all nuts and bolts.
- The installation of this product may require the use of specialized tools and or trained fitter.

For more information regarding this product please visit www.Rockarmor.com.au

The following tools will be required to install the product.

Metric Socket Set 10-18MM.

Socket Extension Bar

Metric Spanner Set 10-18MM.

Torx Drivers T25-T30

Trim Removal Tool

Screwdriver Set (Flat and Phillips head)

Utility Knife

Side Cutters

Pliers

Impact Drill

Loctite

Cable Ties

Masking Tape

Satin Black Automotive Paint

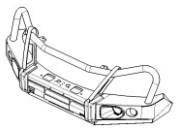
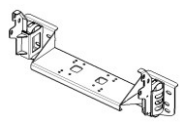
Grease and wax Remover

Scotch Brite or Fine sandpaper

Standard locking torque

M6 - 9Nm | M8 - 22Nm | M10 - 44 Nm | M12 - 77 Nm

Materials list

Item	item	Description	Qty	Item	item	Description	Qty
1	R280003940	 Bull bar assemble	1	2	R280003931	 Winch Frame	1

3	R280003933	 Mounting bracket2 (LH)	1	4	R280003935	 Mounting bracket2 (RH)	1
5	R280003932	 Mounting bracket1 (LH)	1	6	R280003934	 Mounting bracket1 (RH)	1
7	R280003936	 Skid Plate (LH)	1	8	R280003937	 Skid Plate (RH)	1
9	R280003938	 Middle Skid Plate	1	10	R280003939	 Skid Plate bracket	2
11	R200089450	 Bracket	1	12	R280004149	 Rubber (2500mm)	1

Hardware kit

Item	Item NO.	Description	Qty
13	3002833	Hexagonal head bolt M12_45	14
14	3004967	Washer D12(12x32x3mm)	18
15	3000252	Washer D12(12x37x3mm)	12
16	3000171	Spring washer D12	14
17	3001505	Hexagon nut M12	14
18	3003027	Hexagonal head bolt M10x1.25_35	4
19	3005395	Washer D10(10x24x2.2mm)	4
20	3002767	Hexagonal head bolt M10_90	4
21	3000245	Washer D10(10x30x2.5mm)	8
22	3000160	Spring washer D10	8
23	3001491	Hexagon nut M10	4
24	3002519	Hexagonal head bolt M6_20	4
25	3002538	Hexagonal head bolt M6_30	17
26	3000222	Washer D6(6x18x1.6mm)	27
27	3000136	Spring washer D6	21
28	3001471	Hexagon nut M6	6

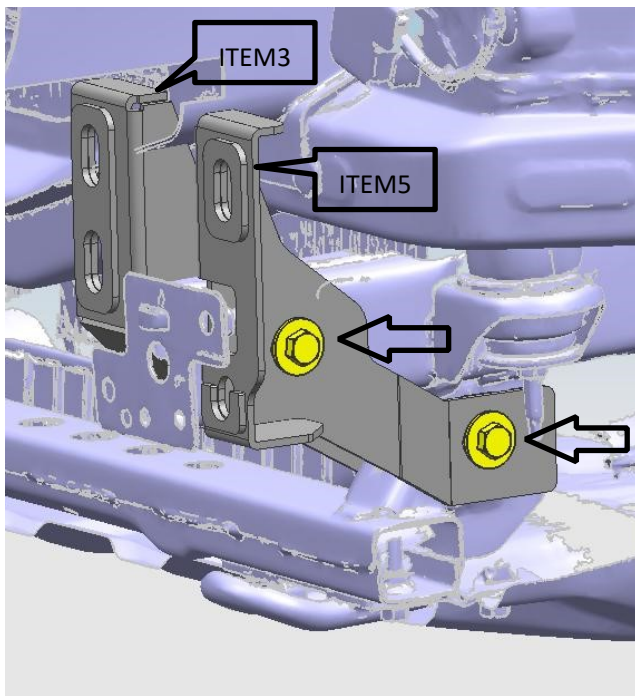
29	E3008094	cage nut M6	2
----	----------	-------------	---

Installation Steps:

1. Remove front surround as shown in picture below

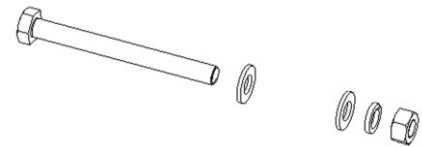


2. Install Mounting bracket—item 3/4/5/6/

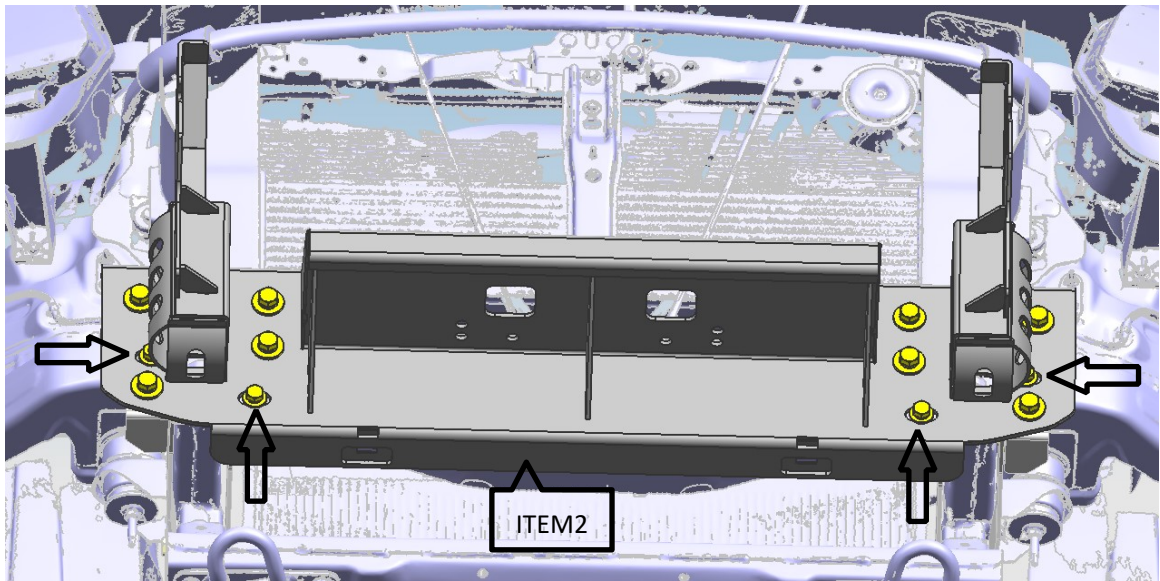


Use below bolt kits:

- 1 Item 20/21/22/23 (4 sets)
Hexagonal head bolt M10_90+Washer
D10(10x30x2.5mm) (2)+Spring washer D10+Hexagon
nut M10



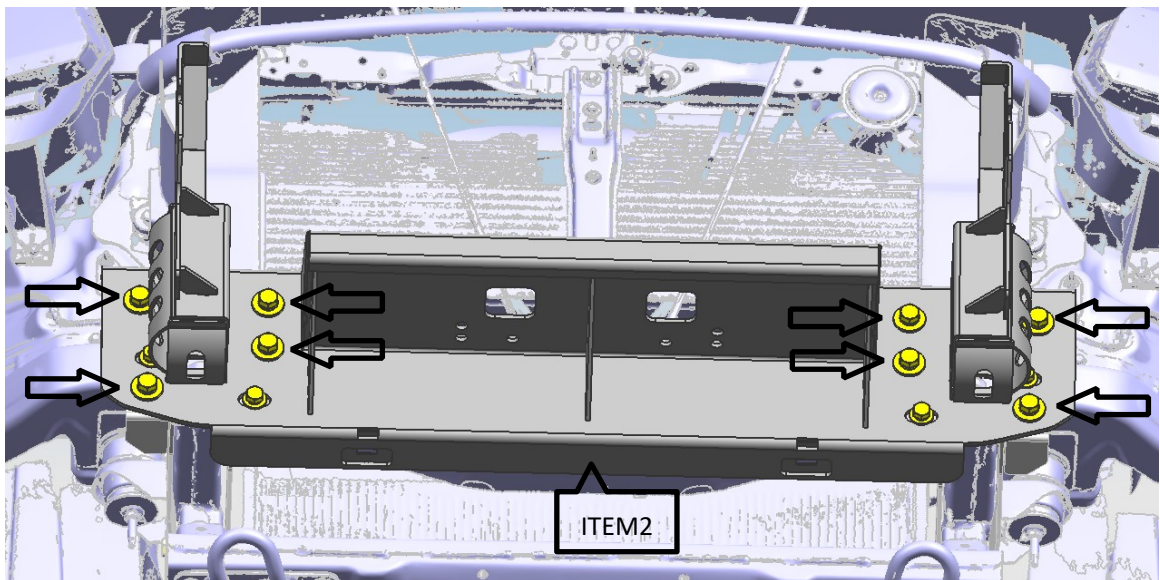
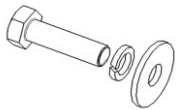
3. Install winch frame—item 2



Need use below bolt kits:

1 Item 18/19/22 ,4sets,

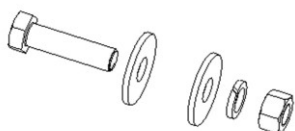
Hexagonal head bolt M10x1.25_35+Spring washer D10+ Washer D10(10x24x2.2mm)



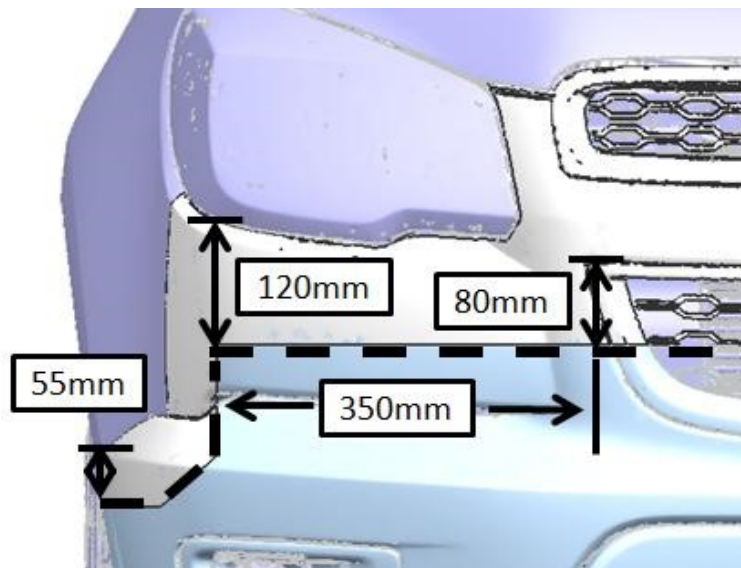
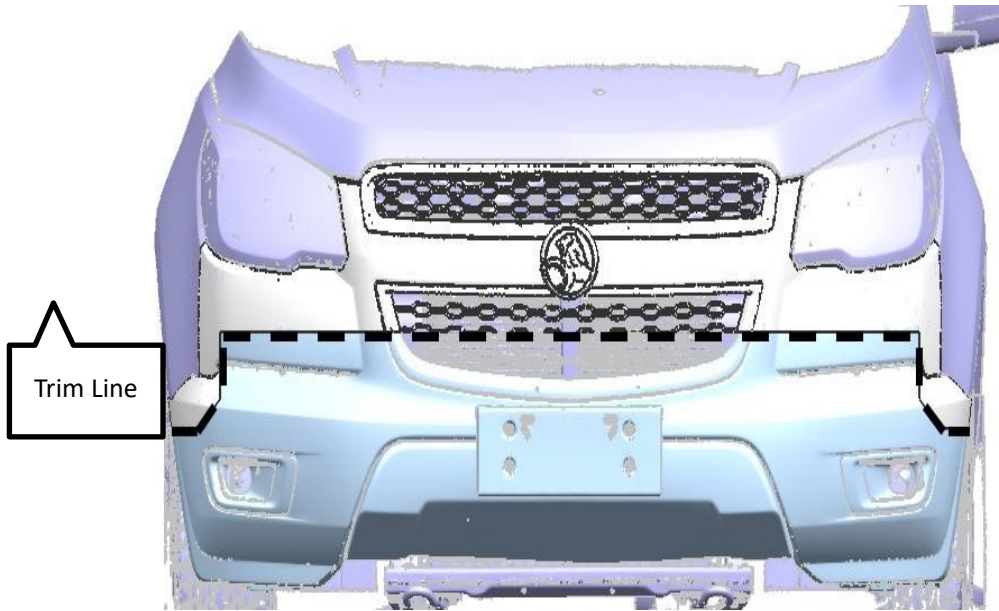
Need use below bolt kits:

1 Item 13/14/16/17 ,8sets,

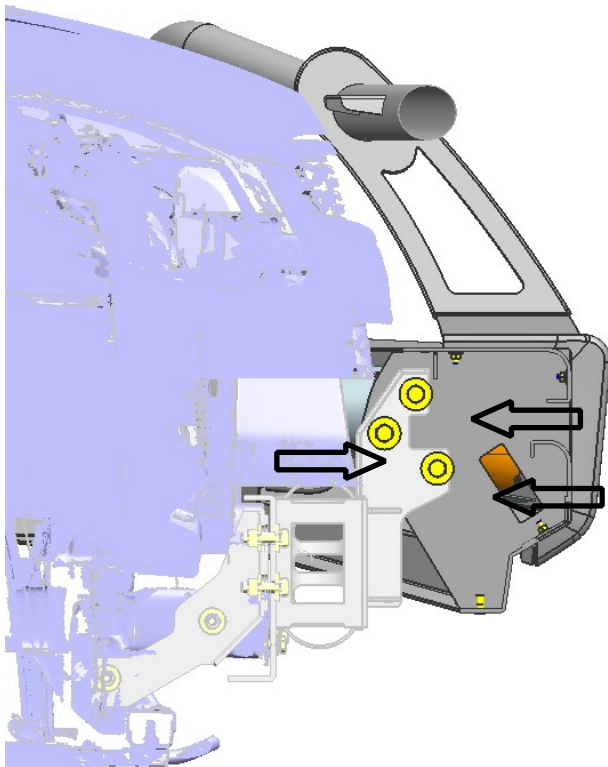
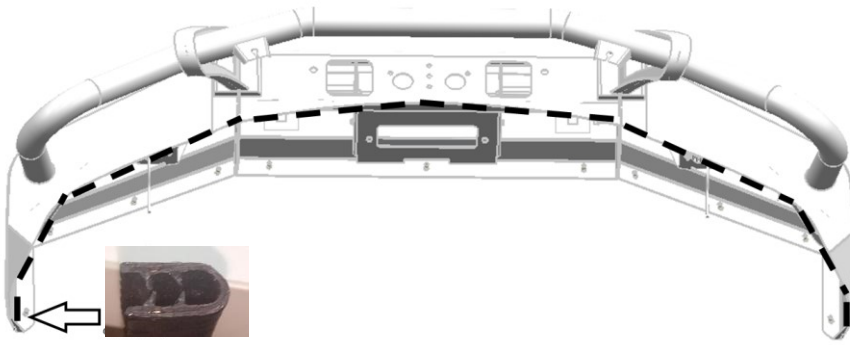
hexagonal head bolt M12_45+ Washer D12(12x32x3mm) (2)+ Spring washer M12+ Hexagon nut M12



4. Mark the bumper trim line (Please Note below measurements are for reference. Check all your Measurements before you cut)

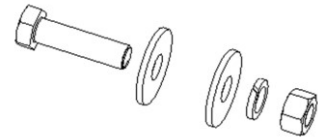


5. Install Bull bar assemble— item 1 (Install pinch weld



Need use below bolt kits:

- 1 Item 13/15/16/17 ,6sets,
hexagonal head bolt M12_45+ Washer
D12(12x37x3mm) (2)+ Spring washer M12+
Hexagon nut M12

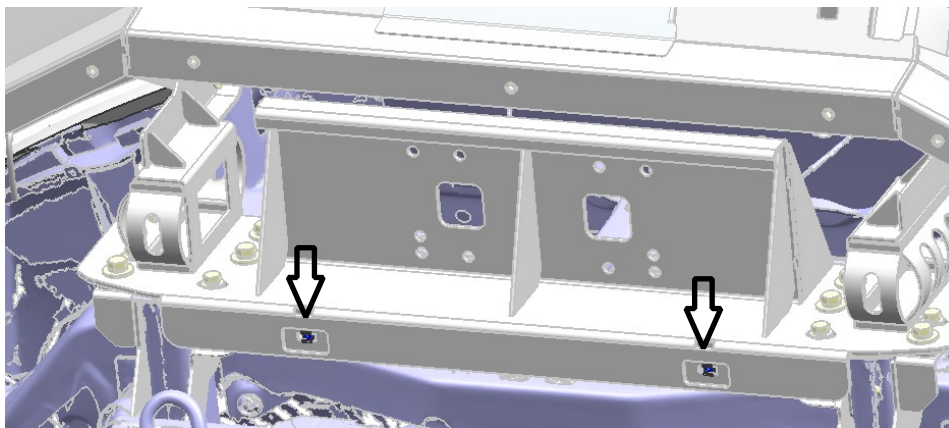


Skid

2. Cut and fit guard lining bash plates place.

1. Carefully go over all the mounting points and ensure they have been

tightened. factory inner to the wing and fix in

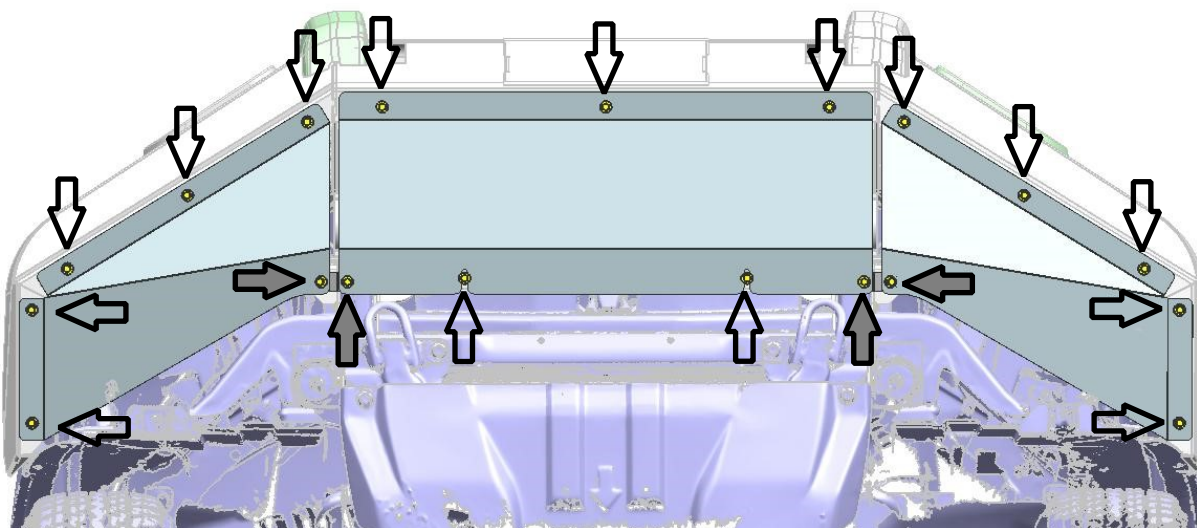


For

Put cage into winch .



more



Need use below bolt

kits:

/26/



spring

Washer



Need use below bolt

kits:

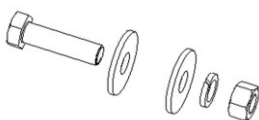
4 /



Washer

Spring washer

Hexagon nut



information check out www.rockarmor.com.au and watch our YouTube



Fitting instruction

installation video.