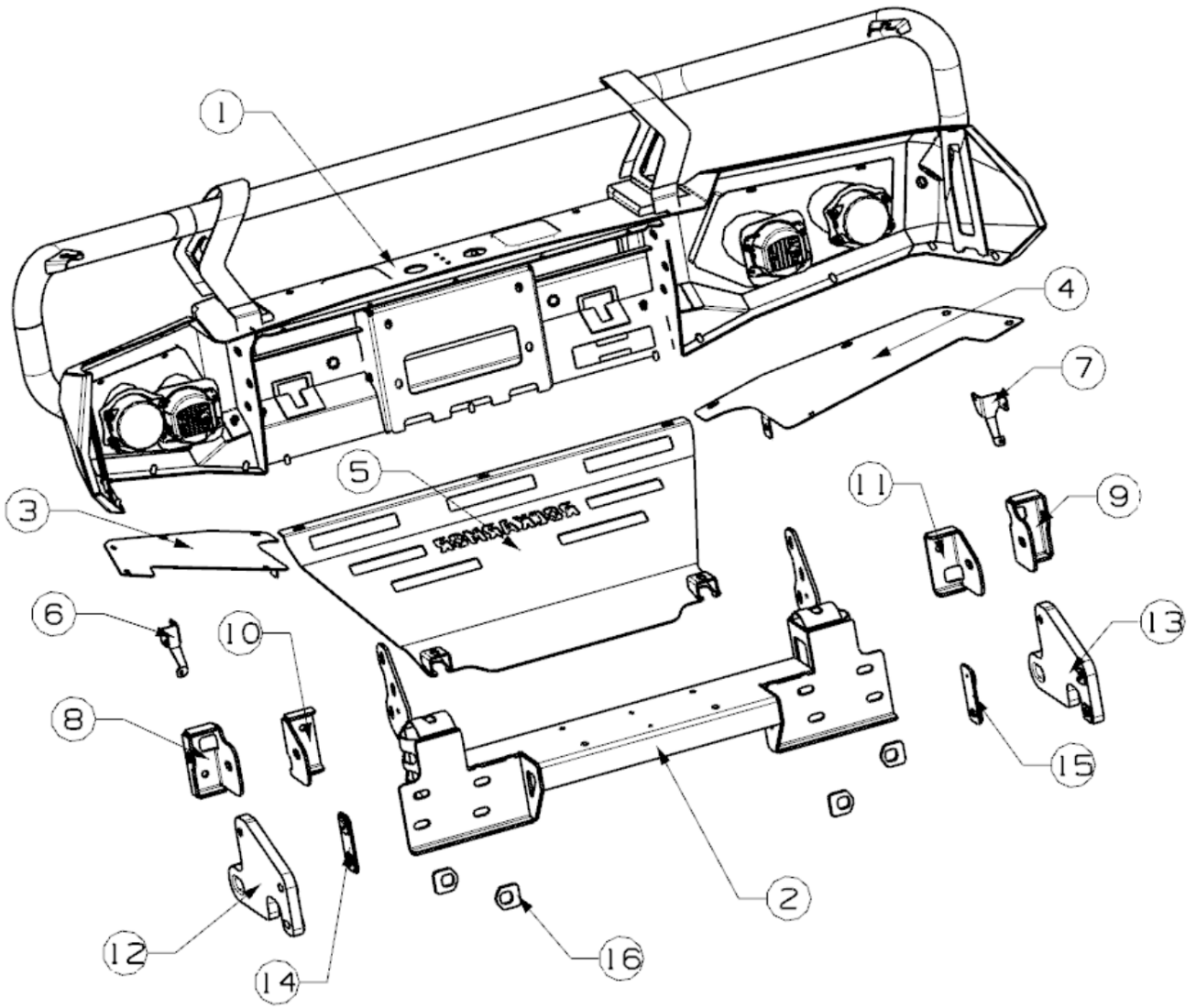


ROCKARMOR Fitting instruction

Description :	GT Bull Bar To Suit 2021+ Mazda BT-50
Model :	2021+ BT-50
Item NO. :	BBRA-BT5020+



ROCKARMOR Fitting instruction



ROCKARMOR Fitting instruction

Note: PLEASE READ BEFORE ATTEMPTING INSTALLATION.

- All Rockarmor products are manufactured to highest of standards and latest finishes including sand blasting all raw material and e coating to clear the product of any impurities and finished with a tiger coat to keep the longevity if at any stage while off road or on road use this product is damaged or scratched have the damaged surface repaired.
- This product and its fixings must not be modified in any way unless stated in this fitting instruction.
- Do not remove labels from this product.
- Do not use this product for any vehicle other than specified in these instructions.
- It is the installer's responsibility to assure this product is installed correctly allowing enough tolerance for movement between the chassis and body and clearance of all components.
- Use Loctite on all nuts and bolts.
- The installation of this product may require the use of specialized tools and or trained fitter.

For more information regarding this product please visit www.Rockarmor.com.au

The following tools will be required to install the product.

Metric Socket Set 10-18MM.
Socket Extension Bar
Metric Spanner Set 10-18MM.
Torx Drivers T25-T30
Trim Removal Tool
Screwdriver Set (Flat and Phillips head)
Utility Knife
Side Cutters
Pliers
Impact Drill
Loctite
Cable Ties
Masking Tape
Satin Black Automotive Paint
Grease and wax Remover.
Scotch Brite or Fine sandpaper.

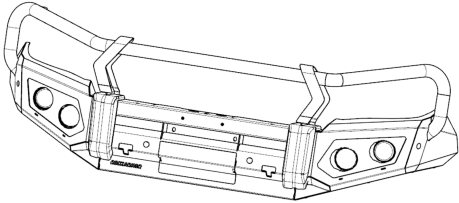
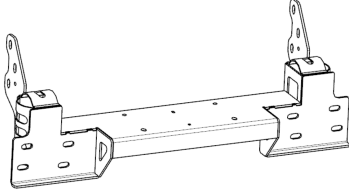
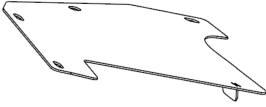
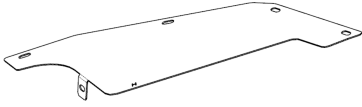
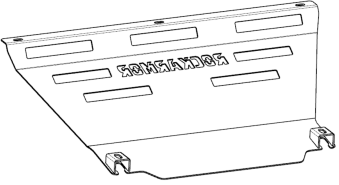

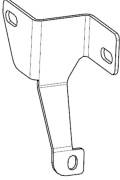
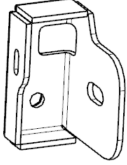
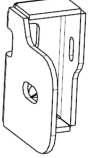
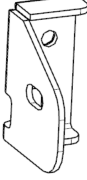
Standard locking torque

M6 - 11Nm | M8 - 18Nm | M10 - 80 Nm | M12 - 90 Nm | M16 - 90 Nm

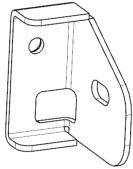
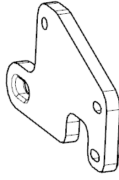
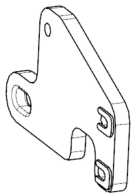



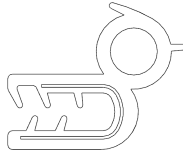
ROCKARMOR Fitting instruction

PLEASE NOTE THE GRILL WILL NEED TO BE CUT AND INSTALLED BEFORE THE BULL BAR IS FITTED TO THE VEHICLE

Material list

Item	Description	Qty	Item	Description	Qty
1	 Bull bar assemble	1	2	 Winch Frame	1
3	 Bash plate(LH)	1	4	 Bash plate(RH)	1
5	 Middle bash plate	1	6	 OE Lights Holder (LH)	1
7	 OE Lights Holder (RH)	1	8	 Outside Bracket(LH)	1
9	 Outside Bracket(RH)	1	10	 Inside Bracket(LH)	1

ROCKARMOR Fitting instruction

11	 Inside Bracket(RH)	1	12	 Recovery points(LH)	1
13	 Recovery points(RH)	1	14	 Recovery points Holder(LH)	1
15	 Recovery points Holder(RH)	1	16	 Bracket plate	4
N/A	 Pinch mould (500mm)	1			

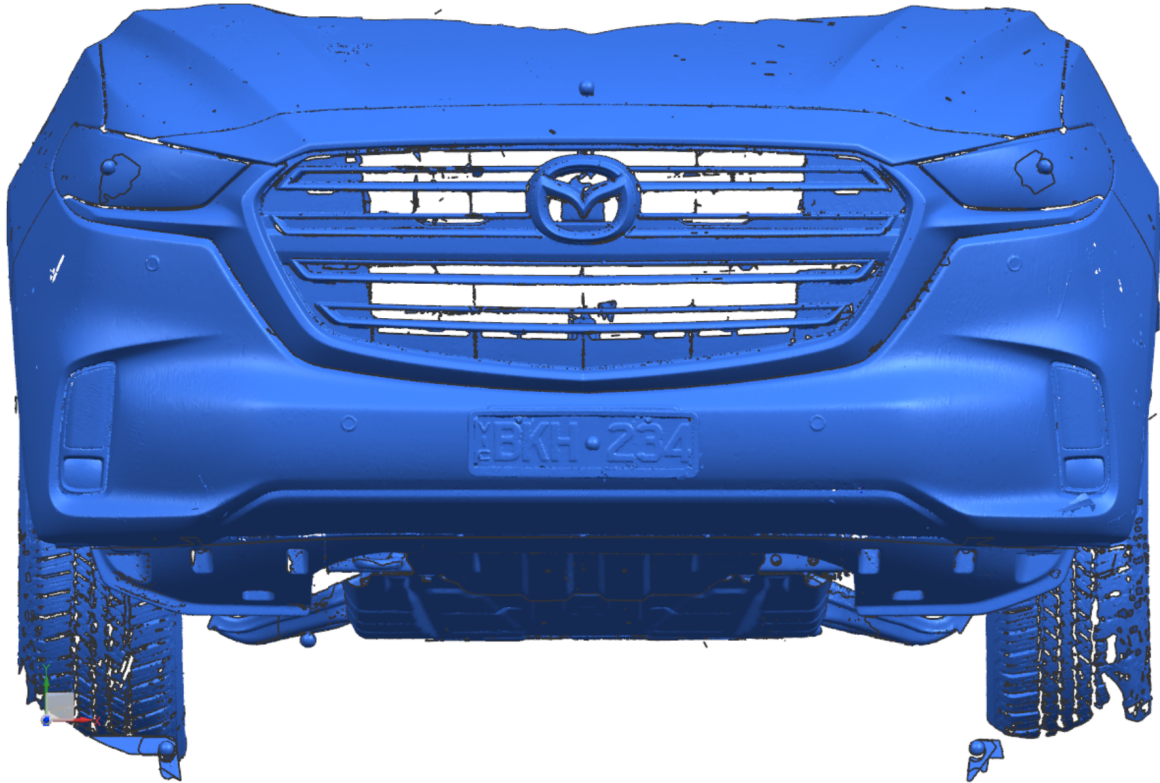
Item	Description	Qty
17	D6x22_2 Washer	4
18	Hexagonal head bolt M10x120	4
19	Hexagonal head bolt M8x100	2
20	Hexagonal head bolt M12x35	6
21	Hexagonal head bolt M12x45	4
22	Hexagonal head bolt M6x20	17
23	Hexagonal head bolt M6x25	2
24	Hexagonal head bolt M10x1.25x30	2
25	Hexagonal head bolt M10x1.25x45	4
26	Hexagonal head Nut M10x1.5	4
27	Hexagonal head Nut M12x1.75	10
28	Hexagonal head Nut M6	4
29	Hexagonal head Nut M10x1.25	4
30	D10x30_2 Washer	12
31	D6x18_2 Washer	21
32	D8x24_2 Washer	2
33	D10x20_2 Washer	8
34	Spring Washer D10	8

ROCKARMOR Fitting instruction

35	Spring Washer D12	10
36	Spring Washer D6	19
37	Spring Washer D8	2
38	Flange Nut M10x1.25	2
39	D12x32_3 Washer	20
40	Flange Nut M6	2

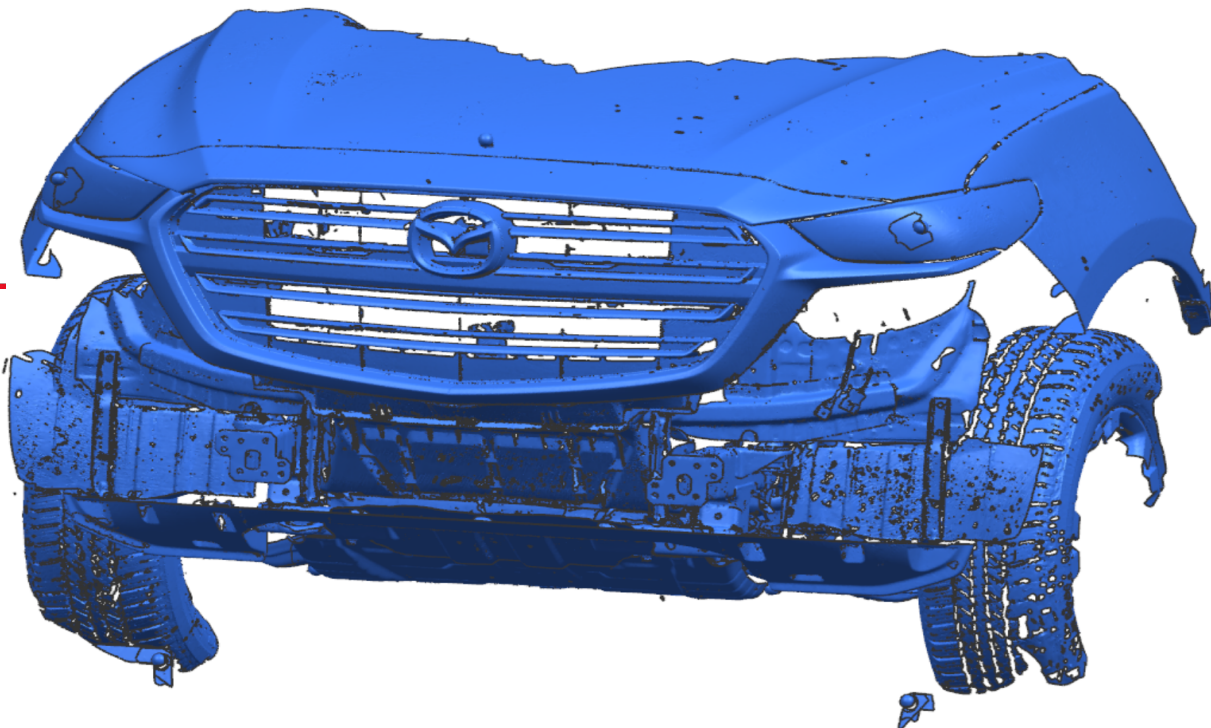
ROCKARMOR Fitting instruction

1. Installation Steps:



Remove front factory bumper (Take care when unclipping any wiring harnesses)
ALONG THE LINE SHOWN BELOW.

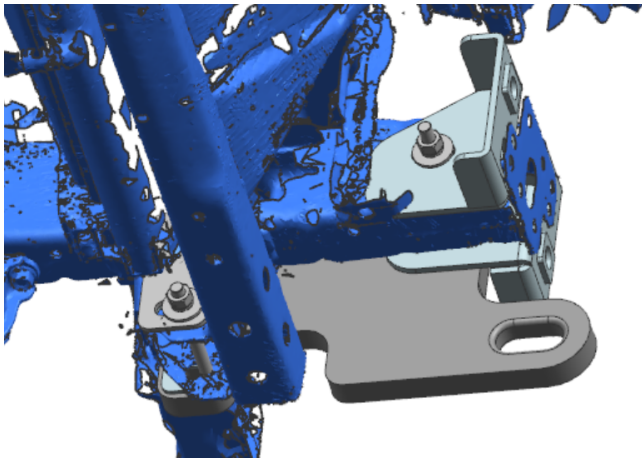
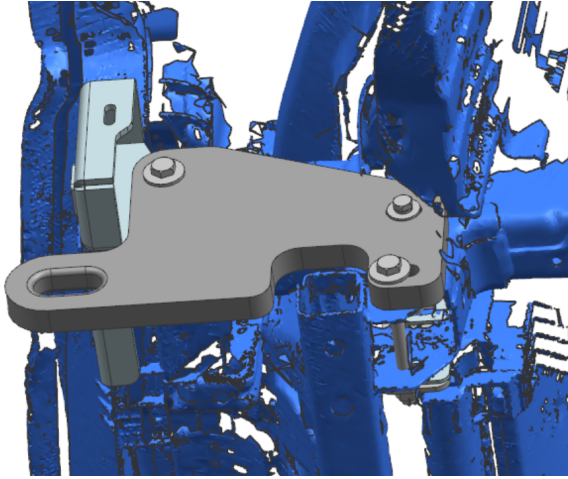
CUT THE GRILL



Cut the inner plastic guard along the body line and fasten into place using M6 Bolt to factory mount.

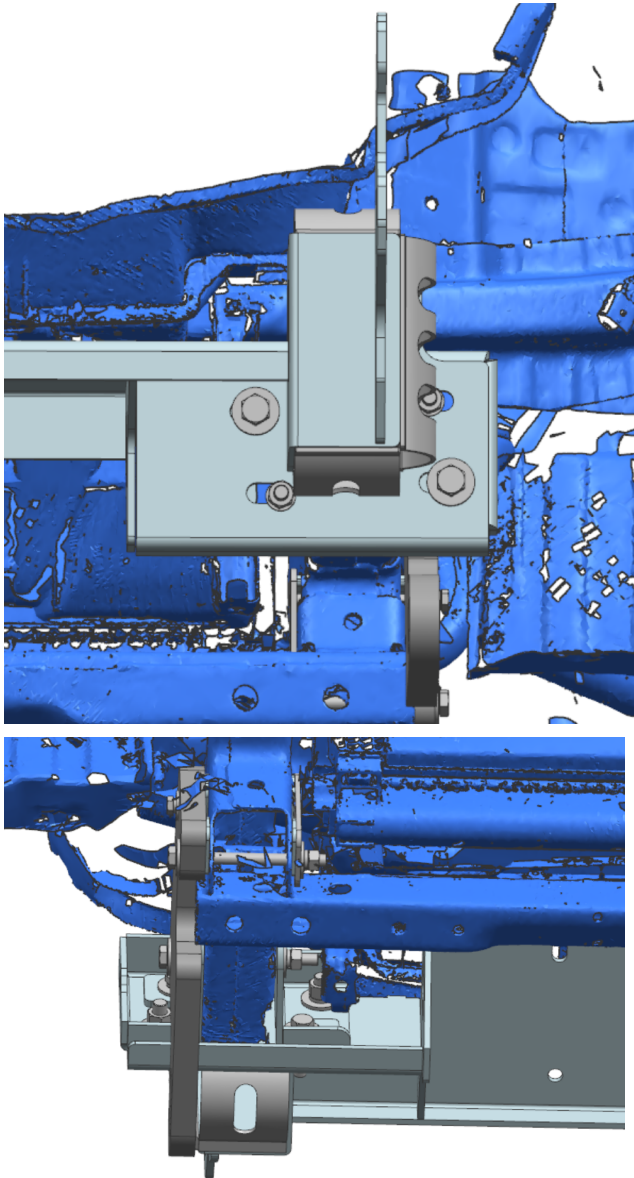
ROCKARMOR Fitting instruction

2. Chassis Mount: item 8&9&10&11&12&13&14&15 (LHS)

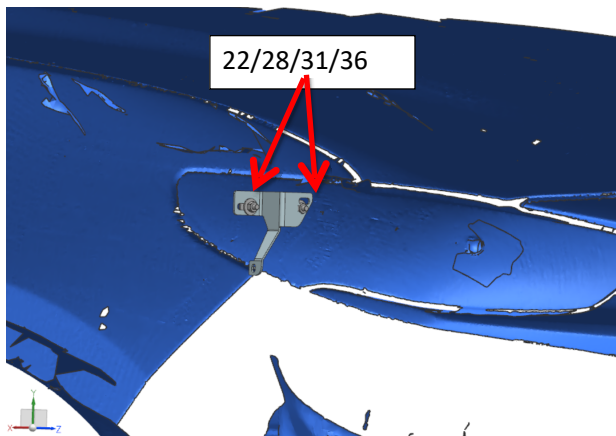


ROCKARMOR Fitting instruction

3. install item 2&16 (LHS)



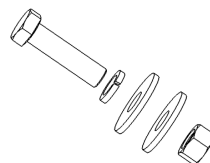
1. Install item 6&7 Fix Factory Headlight In Place



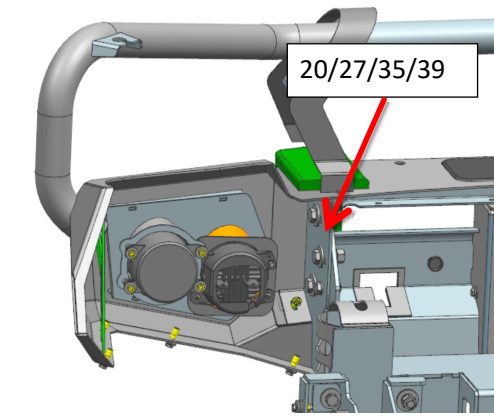
Need use below bolt kits :

Item 22/28/31/36 (2)

Hexagonal head bolt M6x20+Hexagonal head Nut
M6+D6x18_2 Washer+Spring Washer D6



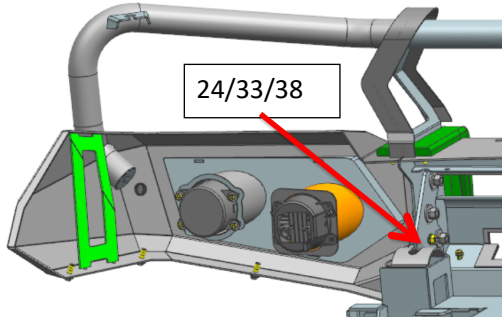
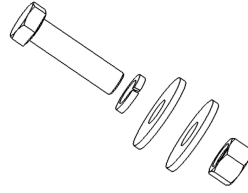
ROCKARMOR Fitting instruction



Need use below bolt kits:

Item 20/27/35/39 (6)

Hexagonal head bolt M12x35 + Hexagonal head Nut M12x1.75 + D12x37_3 Washer + Spring Washer D12



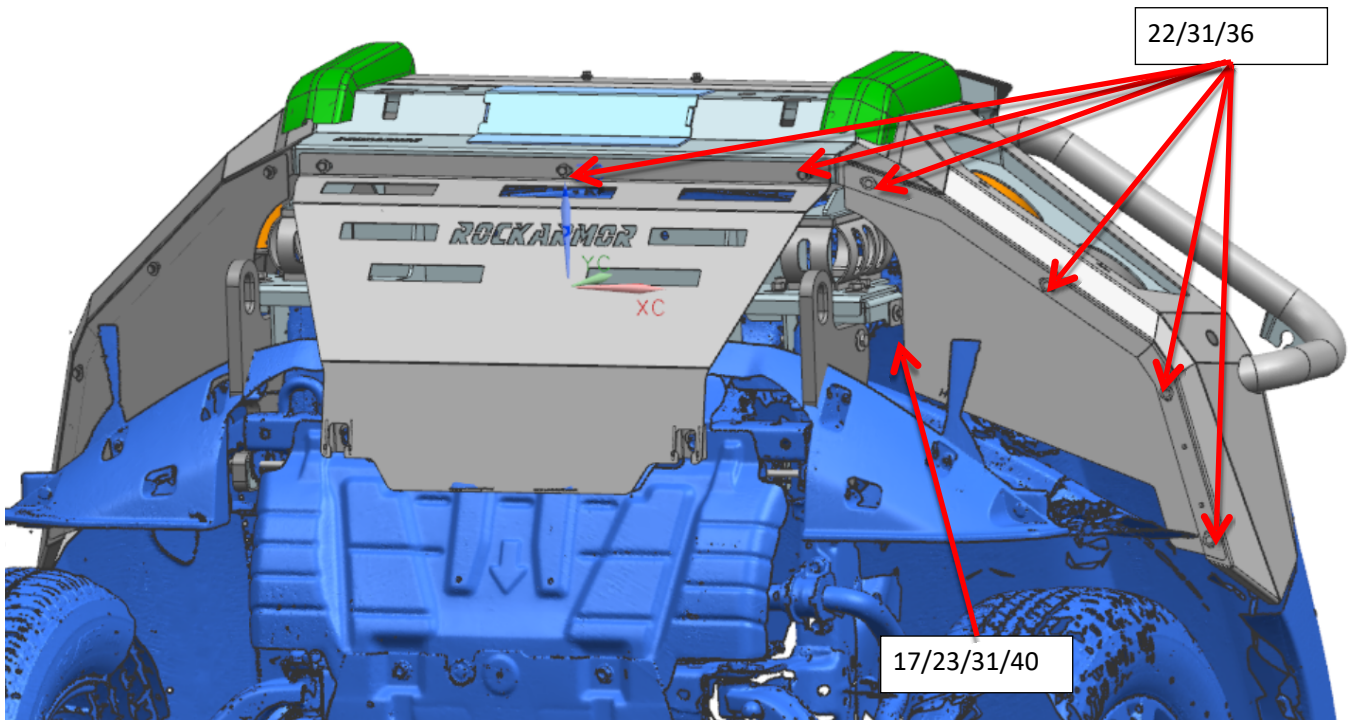
1. Item 24/33/38 (2)

Once Bar is aligned drill a locking hole and fix with the following Hexagonal head bolt M10x1.25x30 + Flange Nut M10x1.25 + D10x20_2 Washer



ROCKARMOR Fitting instruction

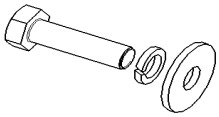
3. Install item 3&4&5



Need use below bolt kits :

1.Item22/31/36 (11)

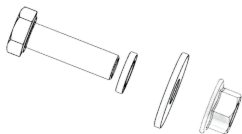
Hexagonal head bolt M6x20+D6x18_2 Washer+Spring Washer D6



2. Use below bolt kits

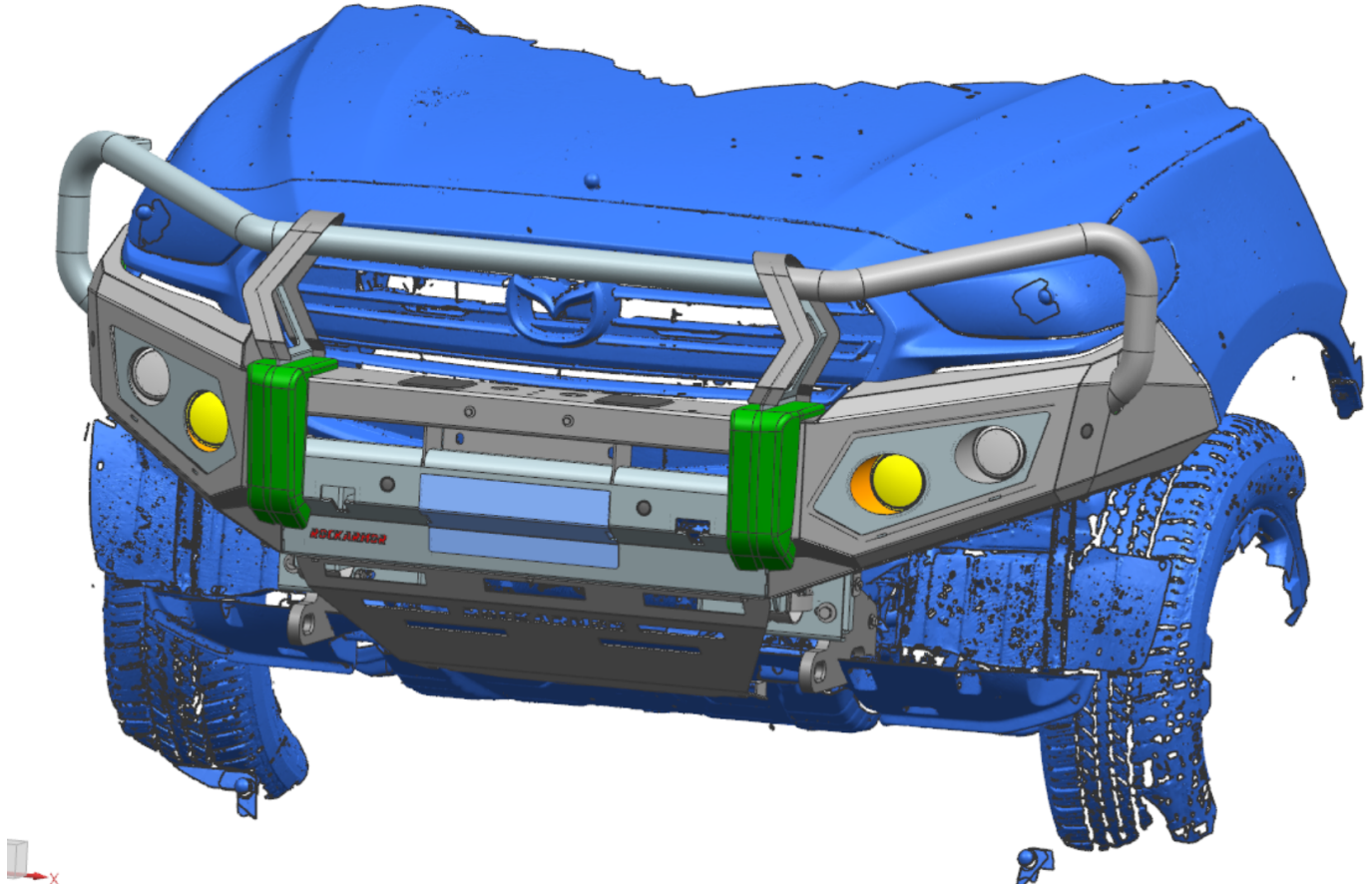
Item17/23/31/40 (2)

Hexagonal head bolt M6x25+ Flange Nut M6 +D6x22_2 Washer+Spring Washer D6



ROCKARMOR Fitting instruction

7. Test and make all mounting points have been tightened.
8. Trim the plastic inner guard along the Bash Plate.



CONGRADULATIONS ON YOUR NEW BULL BAR. WE HOPE THESE INSTRUCTIONS WERE HELPFUL.

For more information check out www.rockarmor.com.au and watch our YouTube installation video.