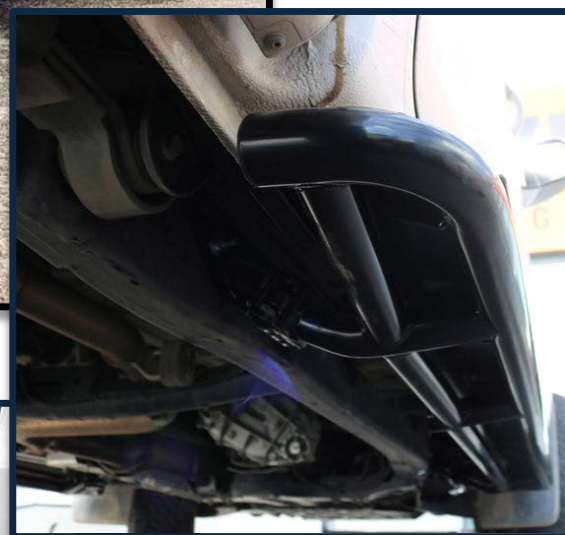


# ROCKARMOR

## Fitting Instructions

Description:	Amarok Rock sliders   Rockarmor   Suits 2011 - 2022
Model:	VW Amarok
SKU:	SSSRA-AMAROK



## Important Notice – Please Read Before Installation

Before commencing the installation, please ensure you have **carefully read and understood all instructions**. Rockarmor products are engineered to the highest standards using premium materials and finishes. This includes **sandblasting all raw materials, e-coating to eliminate impurities**, and applying a **Tiger powder coat** for enhanced durability.

Should the product become scratched or damaged during off-road or on-road use, the affected surface must be **repaired promptly** to maintain corrosion resistance and product longevity.

**Installation must be carried out by a qualified technician**, and all steps must be followed precisely to ensure a secure and proper fit.

## Side Impact Airbag Compatibility

If your vehicle is equipped with **side impact airbags**, the Rockarmor side steps have **airbag-compatible brackets** integrated into the design. These brackets allow the side steps to remain compliant with airbag deployment safety standards while still offering robust protection and functionality.

While Rockarmor side steps are engineered to be durable and suitable for off-road use, **we strongly advise against using them as a high-lift jack point**. Applying a high lifting force may compromise the structural integrity of the **airbag support brackets**, and could impact airbag performance in the event of a collision.

## Note: Please Read Before Attempting Installation

- This product and its fixings **must not be modified** unless explicitly stated in these instructions.
- **Do not remove** any product labels or compliance markings.
- This product is intended solely for use on the **specified vehicle model** outlined in this guide.
- The installer must ensure adequate **clearance between the chassis and body**, and proper fitment to all mounting points.
- **Loctite must be applied** to all bolts and nuts during installation.
- Specialized tools may be required, and we strongly recommend installation be carried out by an **experienced 4x4 accessory fitter**.

## Liability Waiver

By proceeding with the installation, the installer acknowledges responsibility for adhering to these instructions.

**Rockarmor Pty Ltd accepts no liability** for any damage, injury, or vehicle malfunction arising from:

- Improper installation
- Use of this product in a way not intended or advised
- Failure to follow the provided fitting guide

Any deviation from the instructions or product modification will **void all warranties** and transfer all associated risks and liabilities to the installer and/or vehicle owner.

## Occupational Health and Safety (OHS) Guidelines for the Workshop

### Hearing Protection

All personnel must wear appropriate hearing protection in high-noise areas or when operating loud machinery to prevent hearing damage.



### Eye Protection

Approved safety glasses or goggles must be worn at all times to shield the eyes from debris, chemicals, and other hazardous materials.



### Safe Manual Handling Procedures

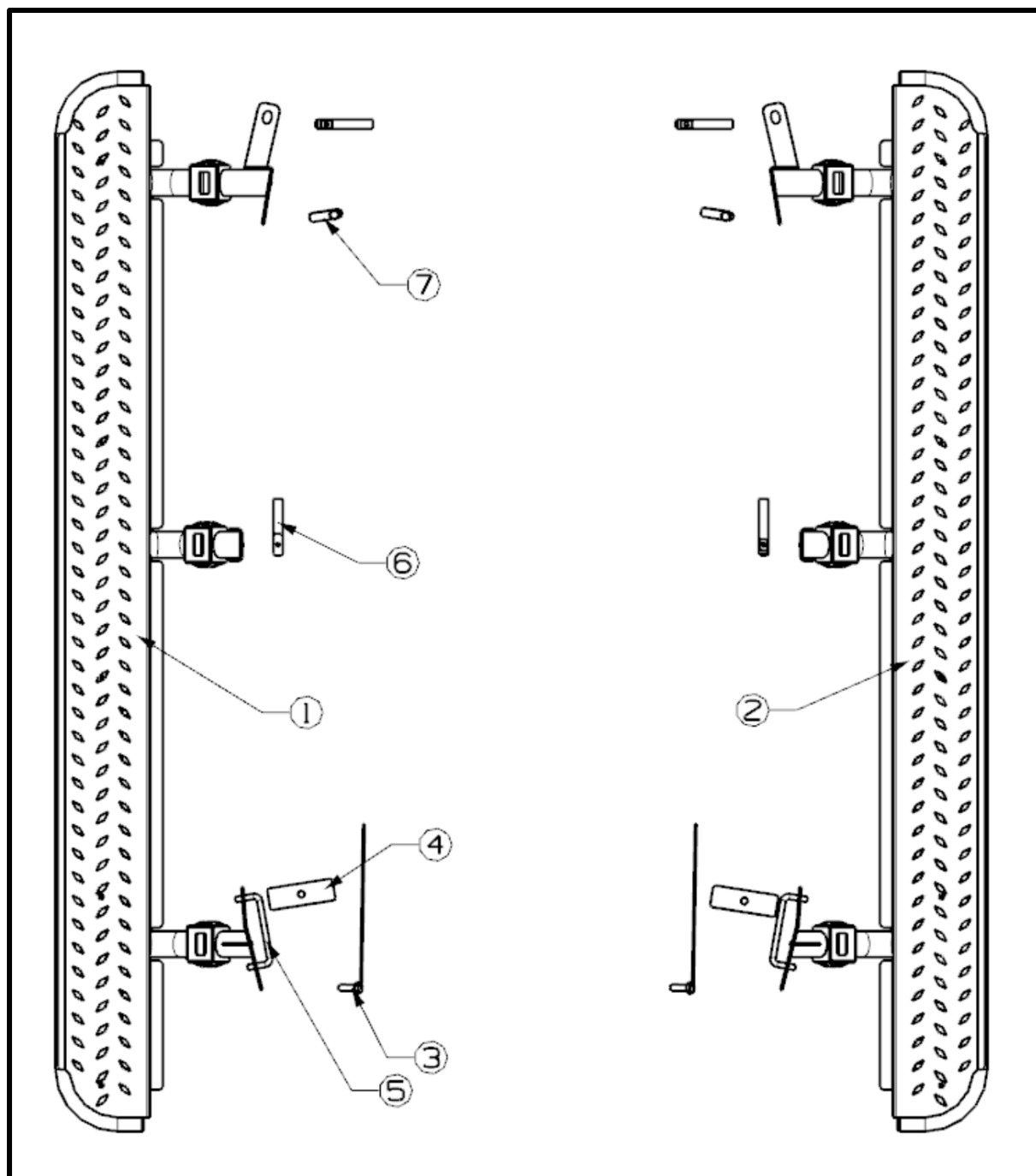
Use correct lifting techniques to avoid strains and injuries. Where possible, utilize mechanical aids and never exceed personal lifting capacity.



### Hazard Awareness and Prevention

Remain vigilant of potential hazards within the workshop. Adhere to all posted warning signs and follow established safety protocols to mitigate risks.



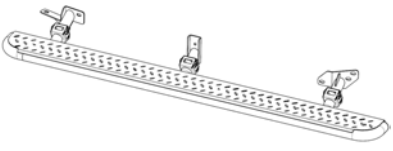
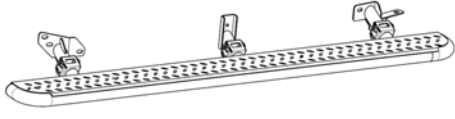


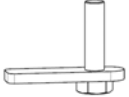
**Please Note:**

- 1) These Side Steps/ Rock Sliders cannot be installed onto other vehicles, in addition to the manufacturer special instructions
- 2) Do not remove labels on the Products.
- 3) Do not change the structure of Side Steps/ Rock Sliders.

**Standard locking torque**

M6 - 11Nm | M8 - 18Nm | M10 - 80 Nm | M12 - 90 Nm | M16 - 90 Nm

### Items List

Item	Description	Qty	Item	Description	Qty
1	 Side Step(LH)	1	2	 Side Step(RH)	1
5	 U- Bolt M10*208	2	6	 M10 Nut Plate	4
7	 T-Bolt M10*40	2			

Item	Description	Qty
8	Hexagonal head bolt M10X40	4
10	Hexagonal head Nut M10*1.5	6
12	Spring Washer D12	2
13	Spring Washer D10	10
14	D12x37 Washer	2
15	D10x30 Washer	10

### Video Instructions Available

For a comprehensive guide on fitting the GT Bullbar, we highly recommend referring to our detailed video tutorial on YouTube:

<https://www.youtube.com/watch?v=CdaGcDmm0m4&t=2s>

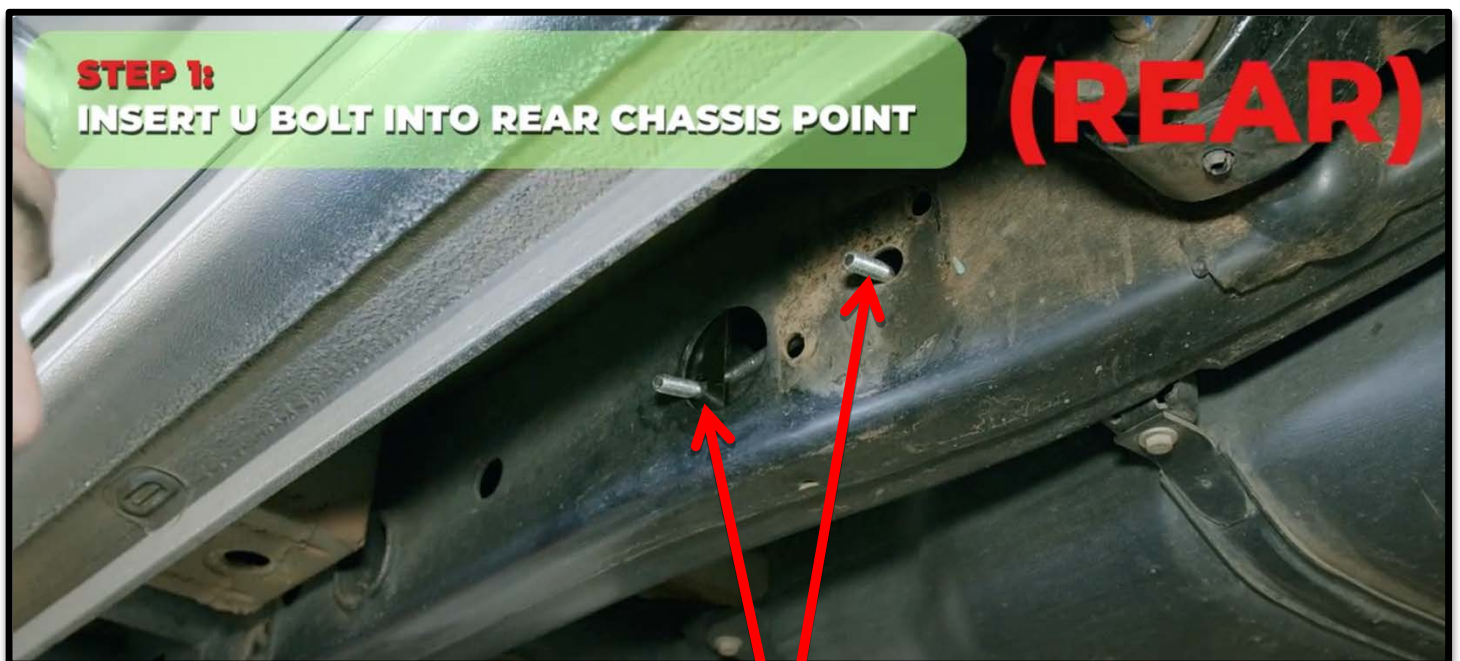
This video, created by a qualified fitter and auto electrician, provides clear, step-by-step visual instructions that are easier to follow than written instructions alone.

Wherever additional clarity is needed throughout these fitting instructions, please refer to the video for more details and demonstrations of specific steps.

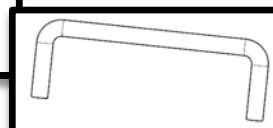


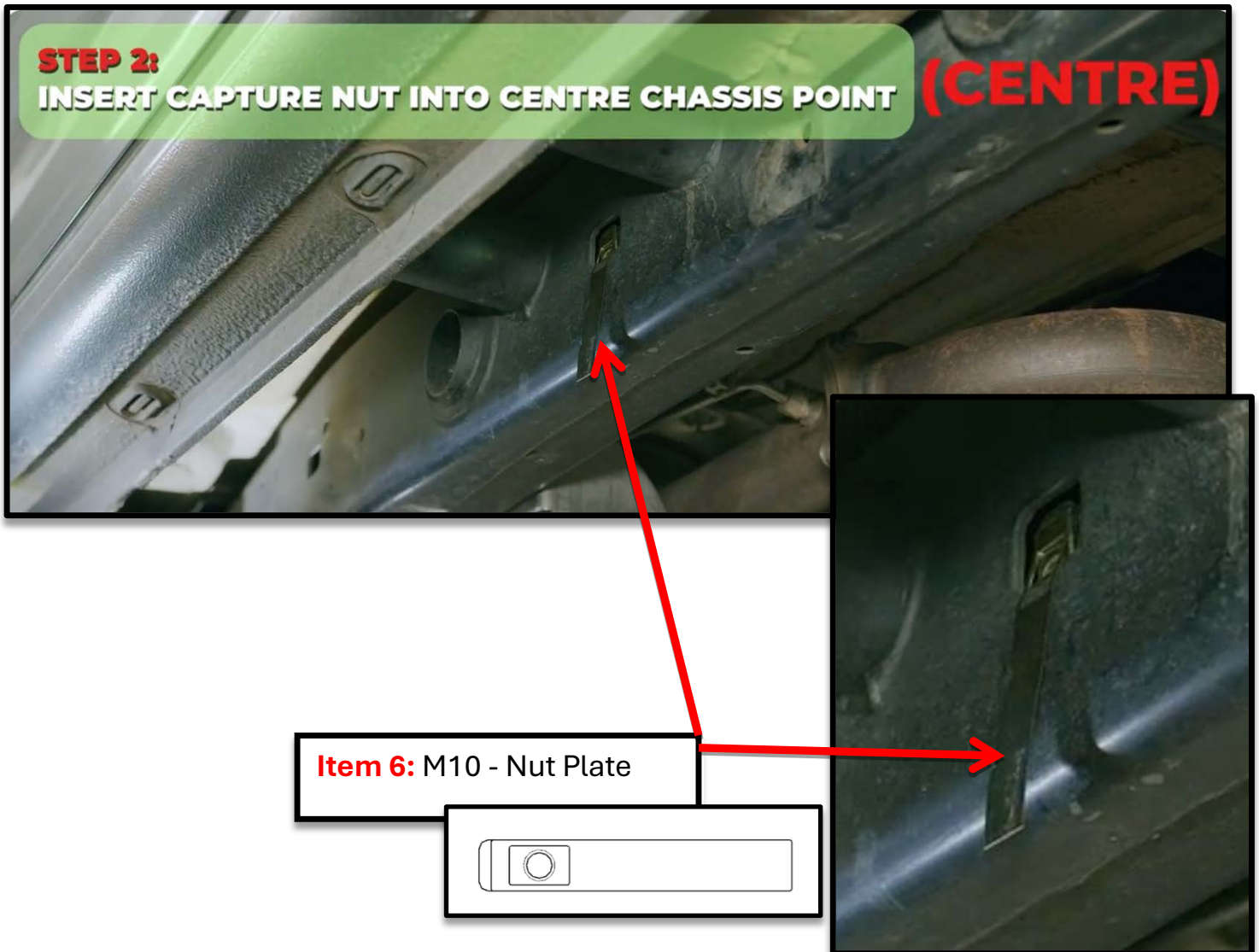
## Installation Steps:

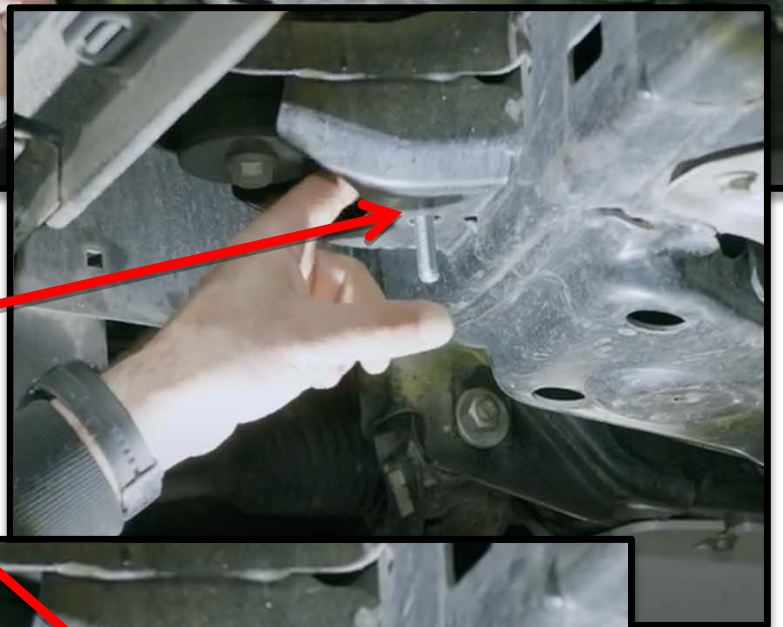
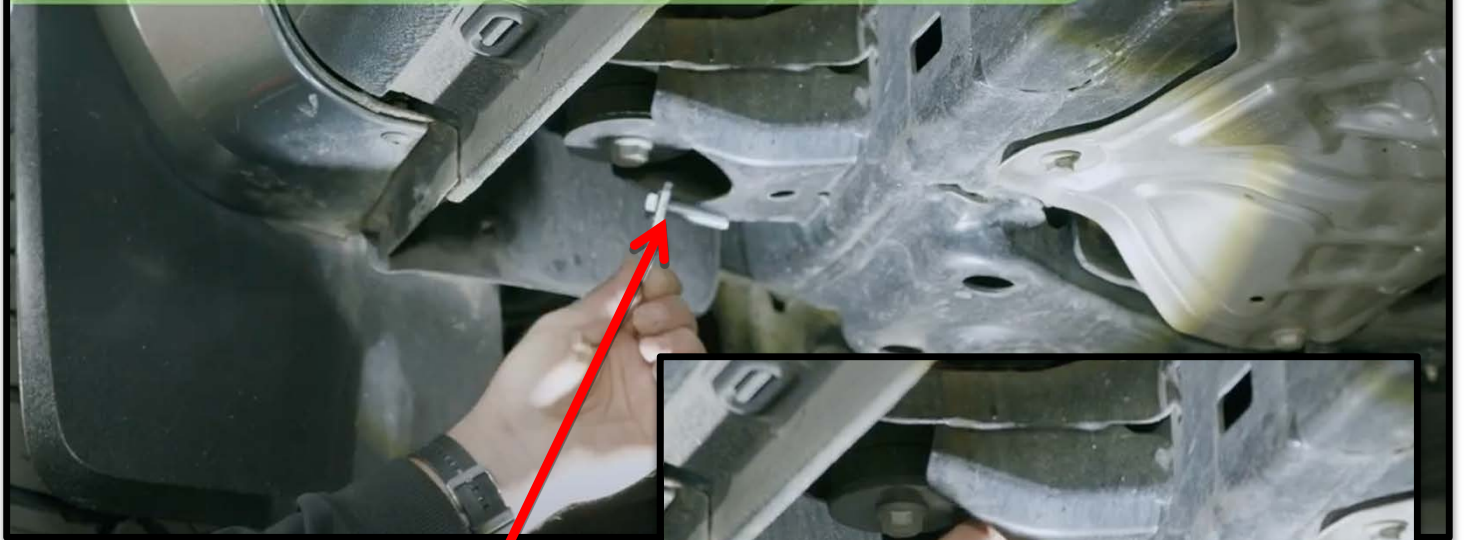
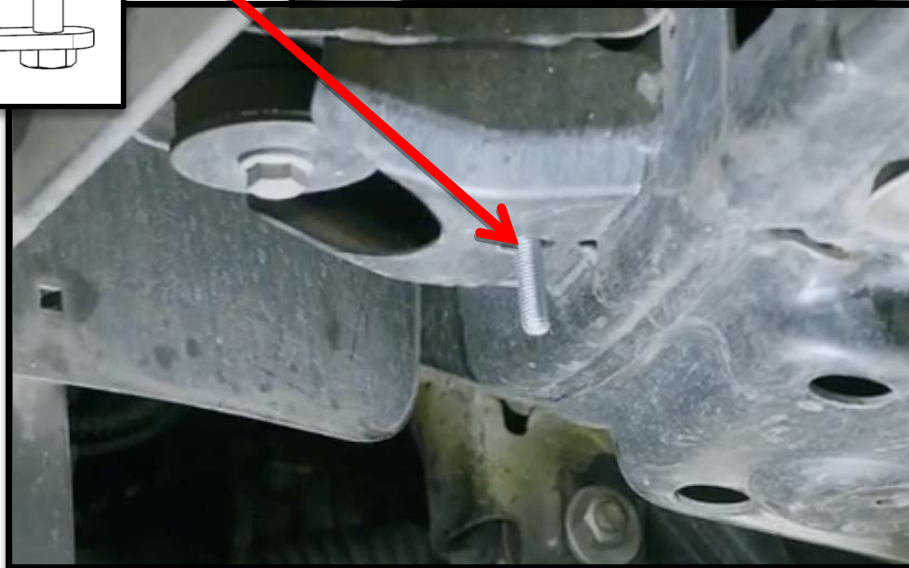
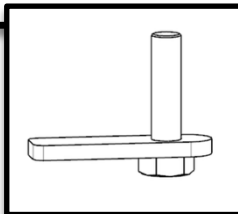
Remove the Original Plastic Sidesheds –  
Right Hand Side (RHS) and Left-Hand Side (LHS)



**Item 5:** U-Bolt M10





**STEP 3:****INSERT CAPTURE BOLT INTO FRONT CHASSIS POINT****(FRONT)****Item 7: M10 – T-Bolt**



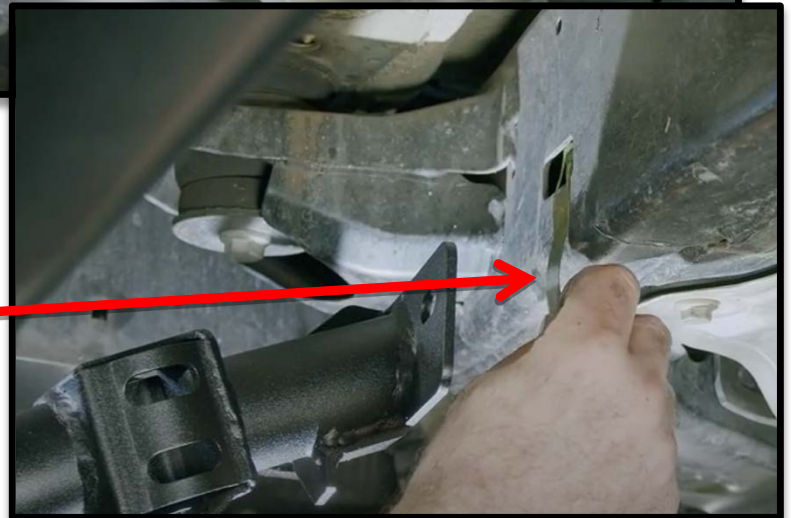
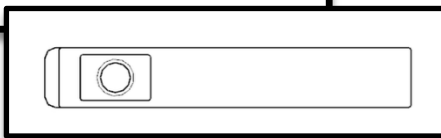
**STEP 4:**

**INSERT CAPTURE NUT INTO FRONT CHASSIS POINT**

**(FRONT)**



**Item 6:** M10 - Nut Plate



## **STEP 5:**

# **ALIGN ROCKSLIDER TO CHASSIS TO SECURE MOUNTING POINTS**





**STEP 6:**  
**SECURE REAR MOUNT TO CHASSIS.**  
**USING FLAT WASHER, SPRING WASHER & NUT**

**(REAR)**

**Bolt Configuration**

**Item 10:** Hexagonal head Nut M10\*1.5

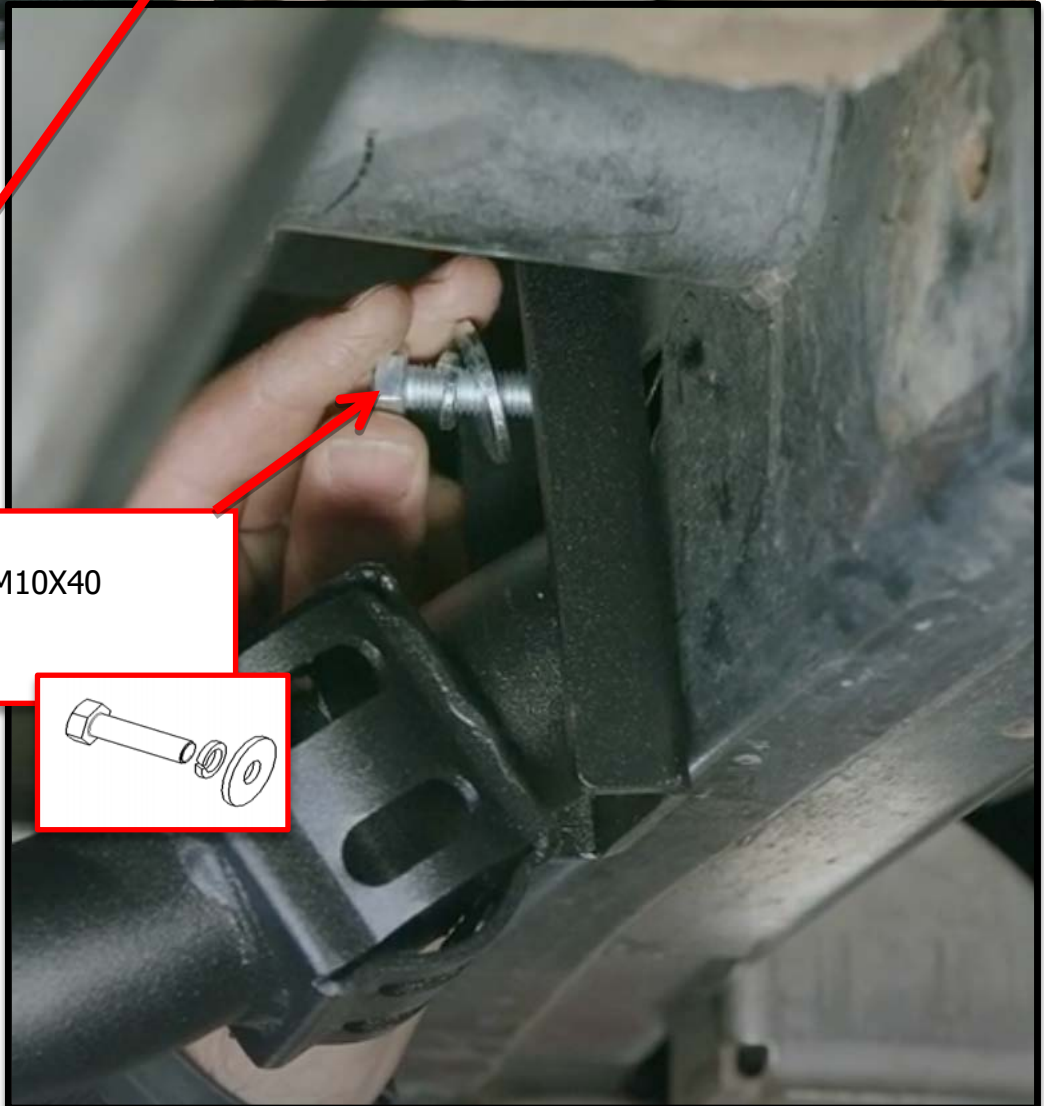
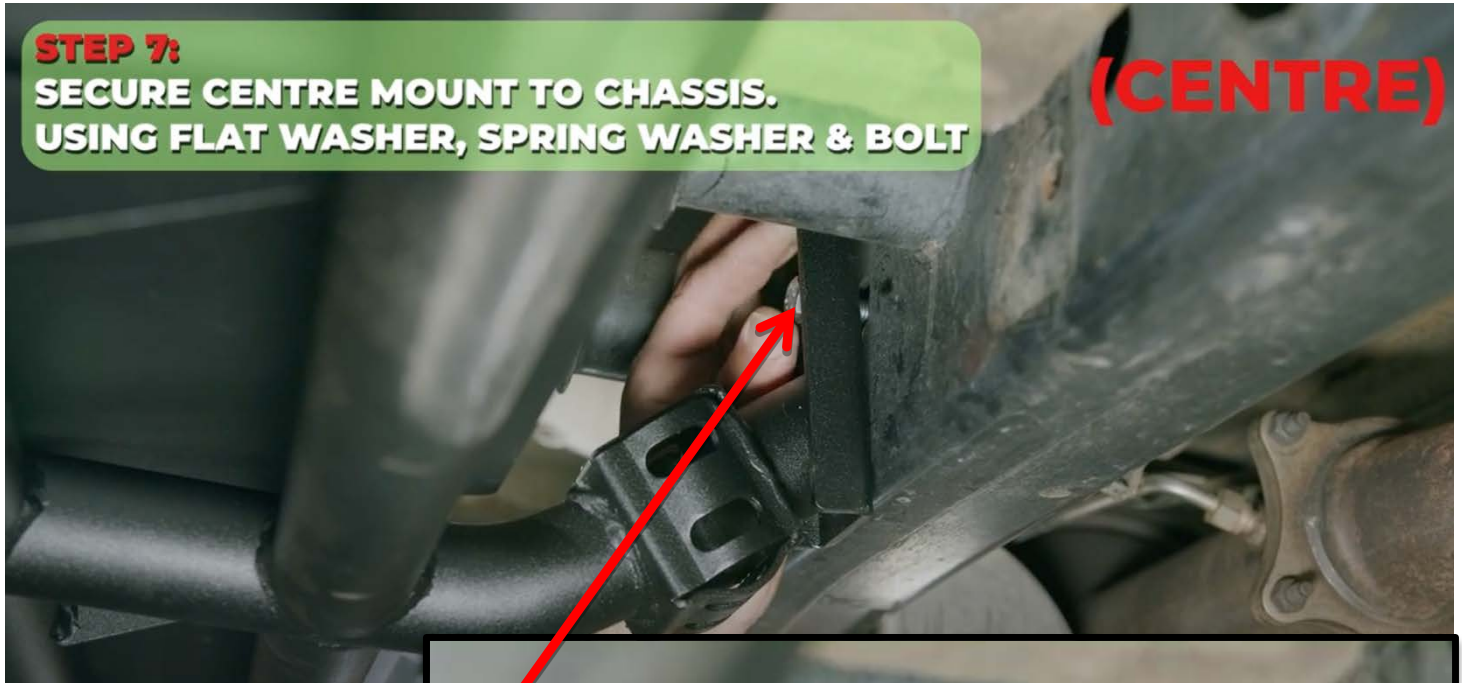
**Item 13:** Spring Washer D10

**Item 15:** D10x30 Washer



**STEP 7:**  
**SECURE CENTRE MOUNT TO CHASSIS.**  
**USING FLAT WASHER, SPRING WASHER & BOLT**

**(CENTRE)**

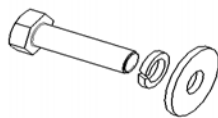


**Bolt Configuration**

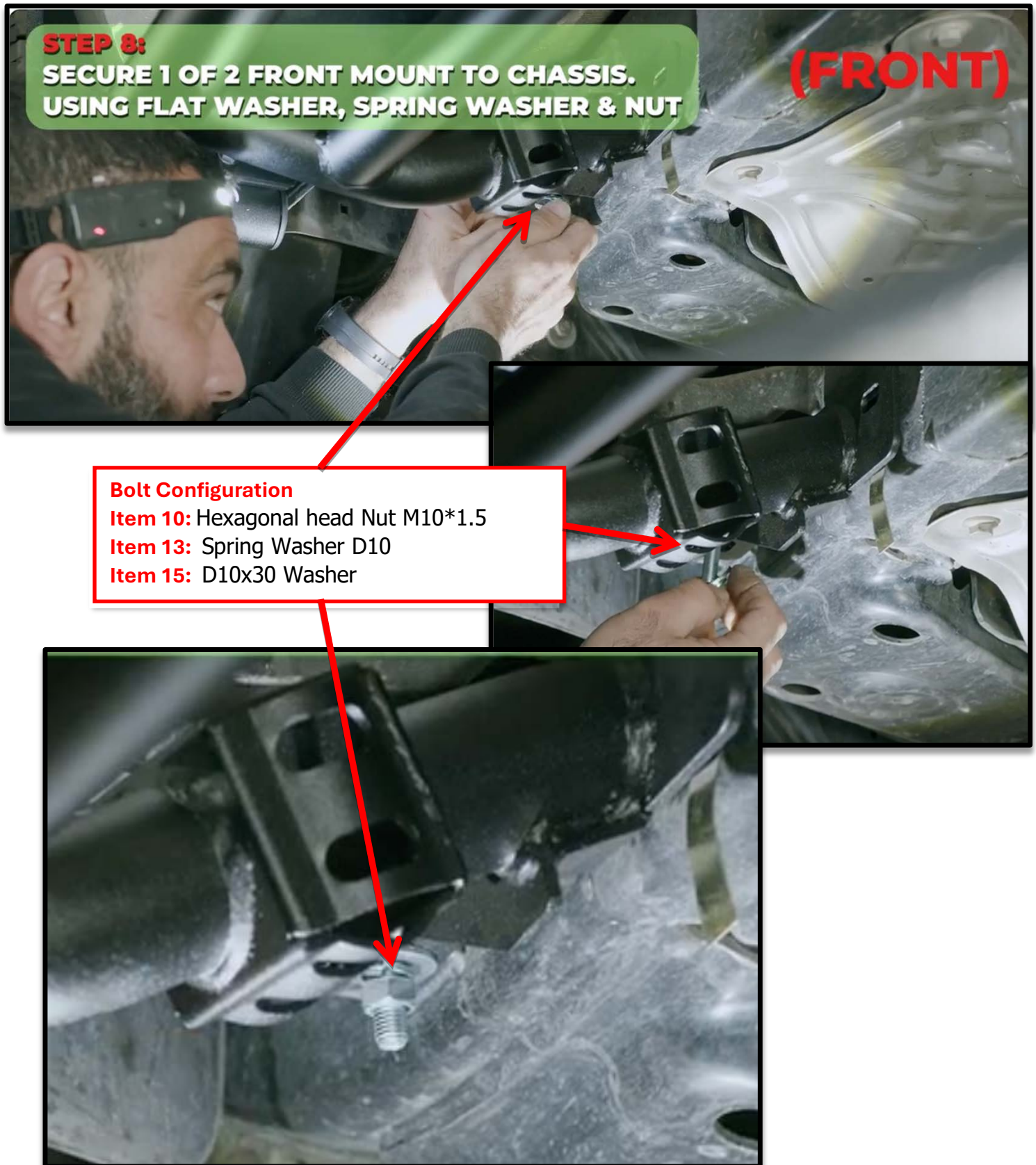
**Item 8:** Hexagonal head bolt M10X40

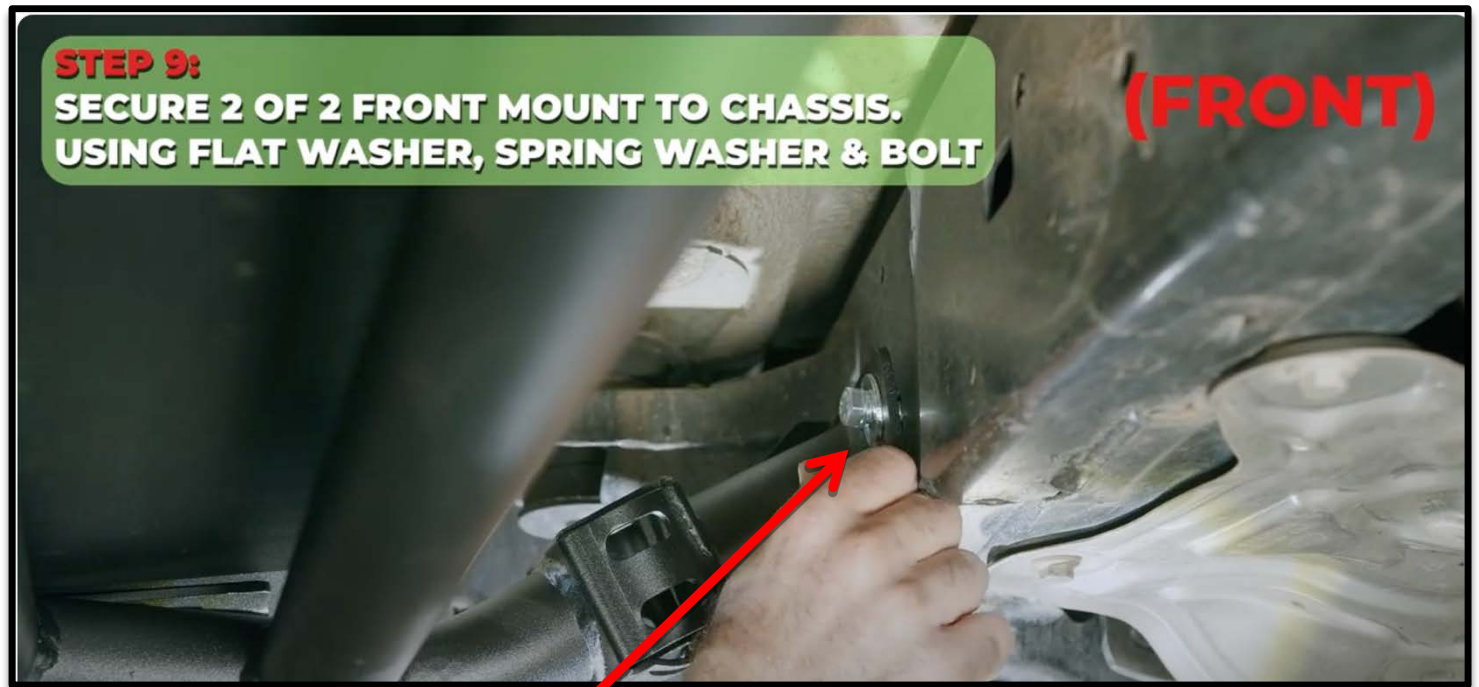
**Item 13:** Spring Washer D10

**Item 15:** D10x30 Washer







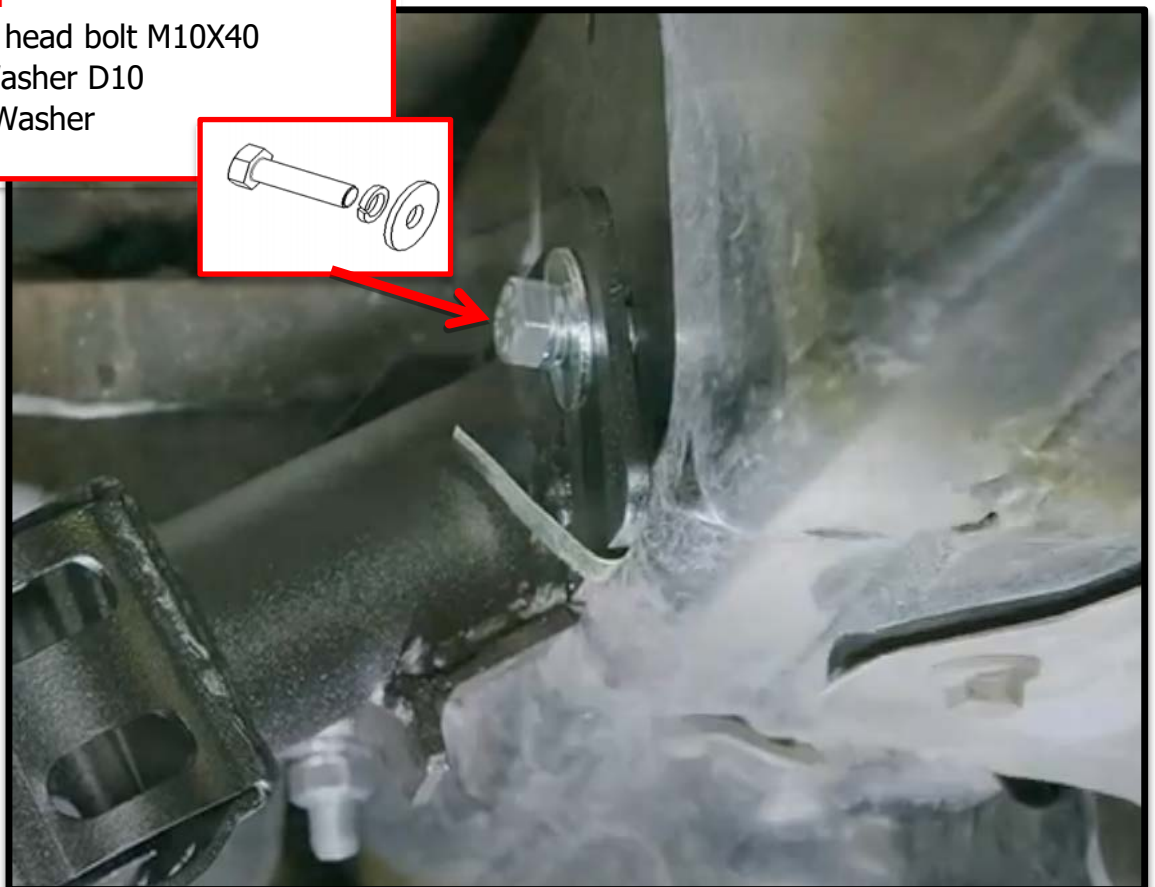
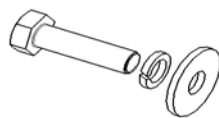


**Bolt Configuration**

**Item 8:** Hexagonal head bolt M10X40

**Item 13:** Spring Washer D10

**Item 15:** D10x30 Washer

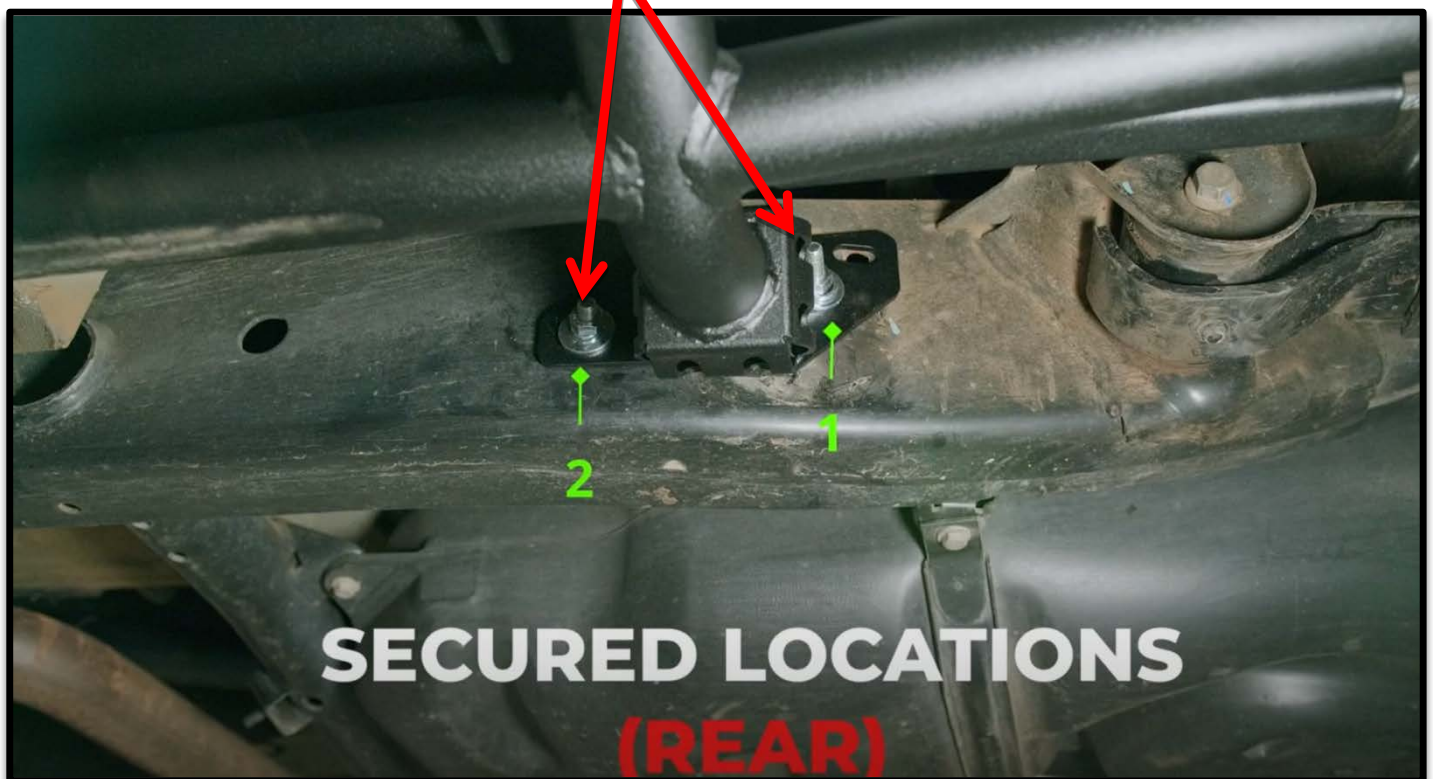


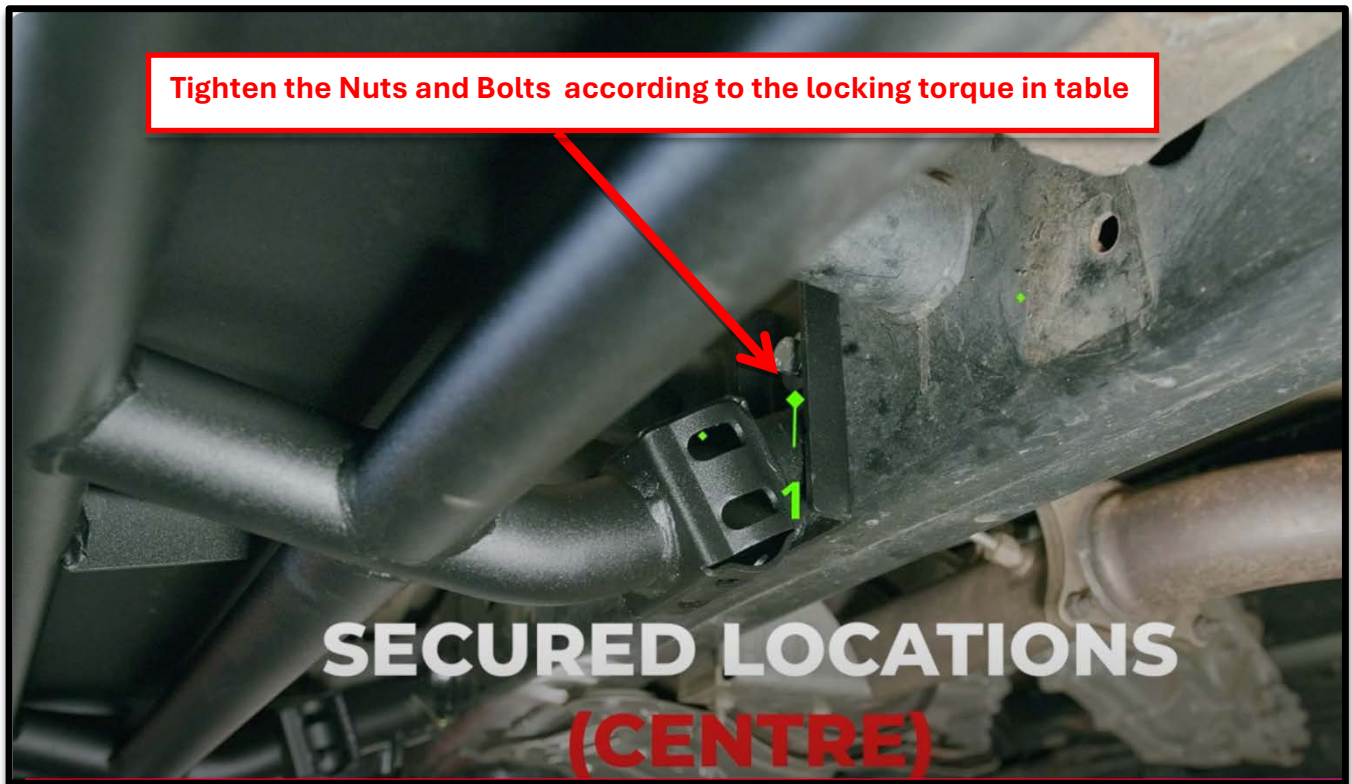


**STEP 10:**  
**TIGHTEN ALL NUTS & BOLTS**

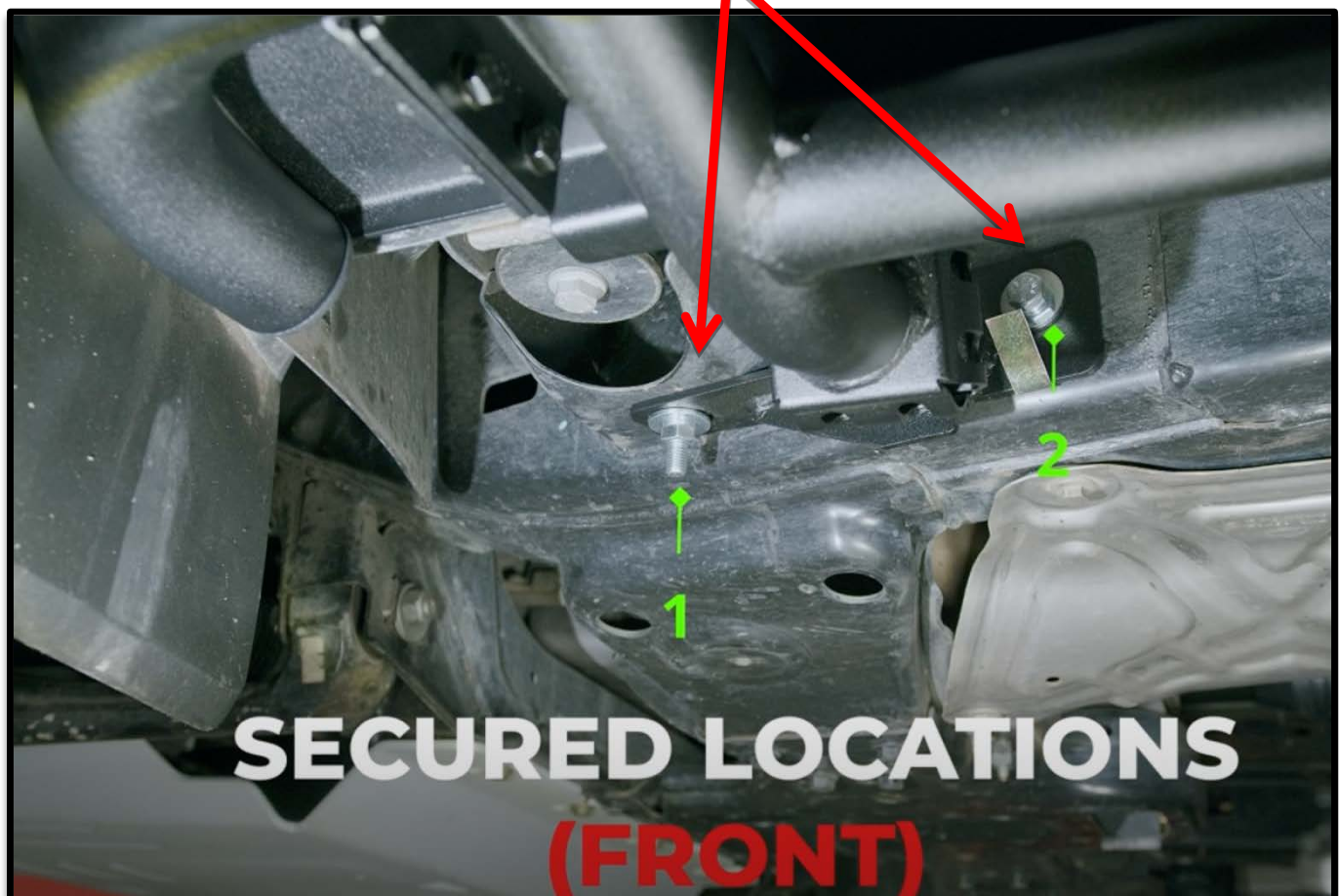


Tighten the Nuts and Bolts according to the locking torque in table





**Tighten the Nuts and Bolts according to the locking torque in table**





**Final Assembly and Testing**

- Description: Tighten all bolts to the specified torque values. Inspect the installation for stability and ensure all components are securely fastened. Test fit the guard to confirm there are no vibrations or misalignments.
- Safety Note: Do not operate the vehicle without completing the final inspection.

**Disclaimer**

Rockarmor Pty Ltd takes no responsibility for any damages, injuries, or vehicle malfunctions resulting from improper installation or failure to follow the provided fitting instructions.

We strongly recommend that the installation of this product be carried out by a qualified and experienced fitter with the appropriate tools and knowledge to ensure safety and proper functionality.

Any modifications to the product or deviations from the instructed procedure will void all warranties and transfer full responsibility to the installer and/or vehicle owner.

By proceeding with the installation, the installer acknowledges and accepts all risks and liabilities associated with the fitting process.