

ROCKARMOR

Fitting Instructions

| | |
|--------------|--|
| Description: | TOYOTA PRADO 150 2009- 10/2013 PREMIUM BULLBAR |
| Model: | Prado 150 2009-20013 |
| SKU: | BBRA-150 |



Important Notice:

Before commencing the installation, please ensure you have carefully read and understood all instructions. Rockarmor products are engineered to the highest standards, using premium materials and finishes. This includes sandblasting all raw materials, e-coating to eliminate impurities, and applying a Tiger coat for enhanced durability. Should the product become damaged or scratched during off-road or on-road use, the affected surface must be repaired promptly to maintain longevity. Installation should be carried out by a qualified technician, and it is essential to follow the steps precisely to ensure a secure and proper fit.

Note: Please Read Before Attempting Installation

- This product and its fixings must not be modified in any way unless specified in these fitting instructions.
- Do not remove any labels from the product.
- This product is intended solely for use on the specified vehicle model as outlined in these instructions.
- It is the installer's responsibility to ensure the product is correctly installed, allowing for adequate tolerance between the chassis and body, and ensuring clearances for all components.
- Use Loctite on all nuts and bolts during installation.
- The installation of this product may require specialized tools and should be conducted by an experienced fitter.

For more information about this product, please visit www.rockarmor.com.au.

Liability Waiver:

By proceeding with the installation, you acknowledge that the installer is responsible for following these instructions accurately. Rockarmor Pty Ltd will not be held liable for any damages, injuries, or vehicle malfunctions arising from improper installation or failure to adhere to the provided guidelines. Any modifications or deviations from the instructed process will void any warranties and transfer all risks and liabilities to the installer and/or vehicle owner.

The following tools will be required to install the product.

| Hand Tools | Power Tools | Workshop Supplies |
|--|---------------------------------------|---------------------------------|
| Metric Socket Set 10-18MM. | Impact Drill & Bit Set | Loctite |
| Socket Extension Bar | Electric/Air Impact Driver (Optional) | Cable Ties |
| Metric Spanner Set 10-18MM. | | Masking Tape |
| Torque Drivers T25-T30 | | Satin Black Automotive Paint |
| Trim Removal Tool | | Grease and wax Remover. |
| Screwdriver Set (Flat and Phillips head) | | Scotch Brite or Fine sandpaper. |
| Utility Knife | | |
| Side Cutters | | |
| Pliers | | |
| <p>Standard locking torque</p> <p>M6 - 11Nm M8 - 18Nm M10 - 80 Nm M12 - 90 Nm M16 - 90 Nm</p> | | |

Important Fitment Information – Toyota Prado 150 Series

The Toyota Prado 150 Series has several model variations:

- **Model A (2009–2013):** Original front design
- **Model B (2013–2017):** Commonly nicknamed the "*Teardrop Model*" due to the headlight shape
- **Model C (2017–2025):** Updated facelift design

Winch Bracket Installation

The installation process for the winch bracket is generally the same across all Prado 150 models. However, bullbar fitment details can vary depending on the model:

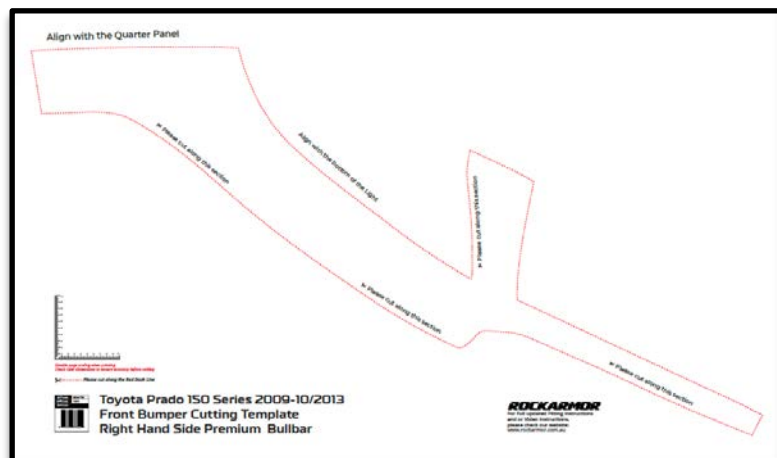
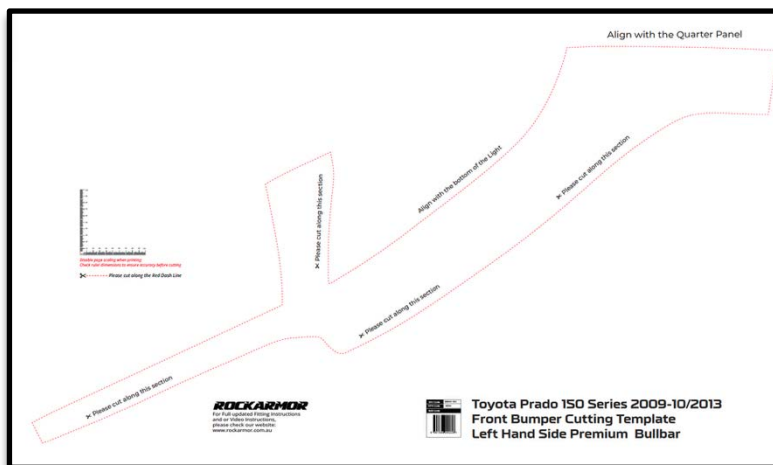
- Earlier models (2009–2013) require a cut in the factory bumper bar. A cutting template is supplied with the bullbar.
- The supplied template comes in two separate parts – **Right-Hand Side (RHS)** and **Left-Hand Side (LHS)** – as shown in the pictures below. Use the correct template sections for your specific Prado model.
- Later models may have different mounting hole positions or require adjustments for factory parking sensors, radar cruise control sensors, and other accessories.

- Sensor locations and wiring layouts may differ between models. Always route wiring away from sharp edges and moving parts.
- Models with factory front cameras (often found on premium variants) may require additional relocation brackets or adjustments to maintain the correct viewing angle.

Note on Photos in Instructions

Images used in these instructions may not always represent the exact model of your Prado 150. In some cases—particularly where generic applications apply—photos may depict the *Teardrop Model* rather than the Original or Facelift designs. This is for reference purposes only. The bullbar bracket fitting process remains consistent across models, with variations only as noted above.

Please note: The template is supplied in two separate parts – Right-Hand Side (RHS) and Left-Hand Side (LHS). Refer to the images below and use the correct template sections for your specific Prado model.



Occupational Health and Safety (OHS) Guidelines for the Workshop

Hearing Protection

All personnel must wear appropriate hearing protection in high-noise areas or when operating loud machinery to prevent hearing damage.



Eye Protection

Approved safety glasses or goggles must be worn at all times to shield the eyes from debris, chemicals, and other hazardous materials.



Safe Manual Handling Procedures

Use correct lifting techniques to avoid strains and injuries. Where possible, utilize mechanical aids and never exceed personal lifting capacity.



Hazard Awareness and Prevention

Remain vigilant of potential hazards within the workshop. Adhere to all posted warning signs and follow established safety protocols to mitigate risks.



Video Instructions Available

For a comprehensive guide on fitting the Premium Bullbar, we highly recommend referring to our detailed video tutorial on YouTube:

This video, created by a qualified fitter and auto electrician, provides clear, step-by-step visual instructions that are easier to follow than written instructions alone.

Wherever additional clarity is needed throughout these fitting instructions, please refer to the video for more details and demonstrations of specific steps.

STEP-BY-STEP INSTALLATION GUIDE**Step 1: Prepare the Vehicle Front**

Remove the factory front bumper from the vehicle.
Be sure to also remove the small plastic winglets on both sides (below the headlights) as this is a non-bumper cut installation.



Remove all required parts for
bullbar installation



Front of Vehicle prepared for
bullbar installation

Step 2: Open the Fitting Kit

Confirm the contents of your Rockarmor fitting kit:

2x mounting brackets (LHS & RHS) with integrated recovery points

1x cradle

Fasteners, plates with welded nuts, and hardware for cradle and bullbar installation



Installation of Brackets

Step 3: Install Mounting Brackets

Slide each mounting bracket into the rear section of the chassis rail.
Use the supplied fine-thread bolts to mount the bracket to the chassis.
Feed the backing plate (with two welded nuts) inside the chassis to pick up two mounting points per side.



Step 4: Mount the Cradle

Place the cradle onto the previously installed brackets.

Secure the cradle using:

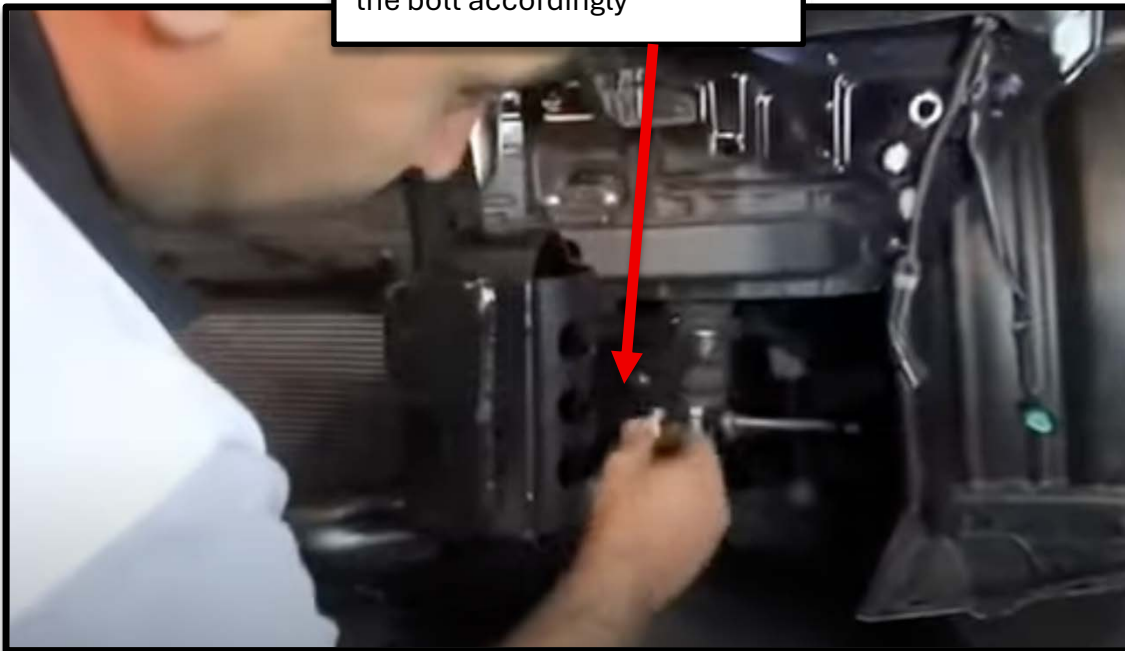
3x factory bolts for the centre

1x bolt with flat and lock washer for the top point

2x bolts for the bottom mounting points

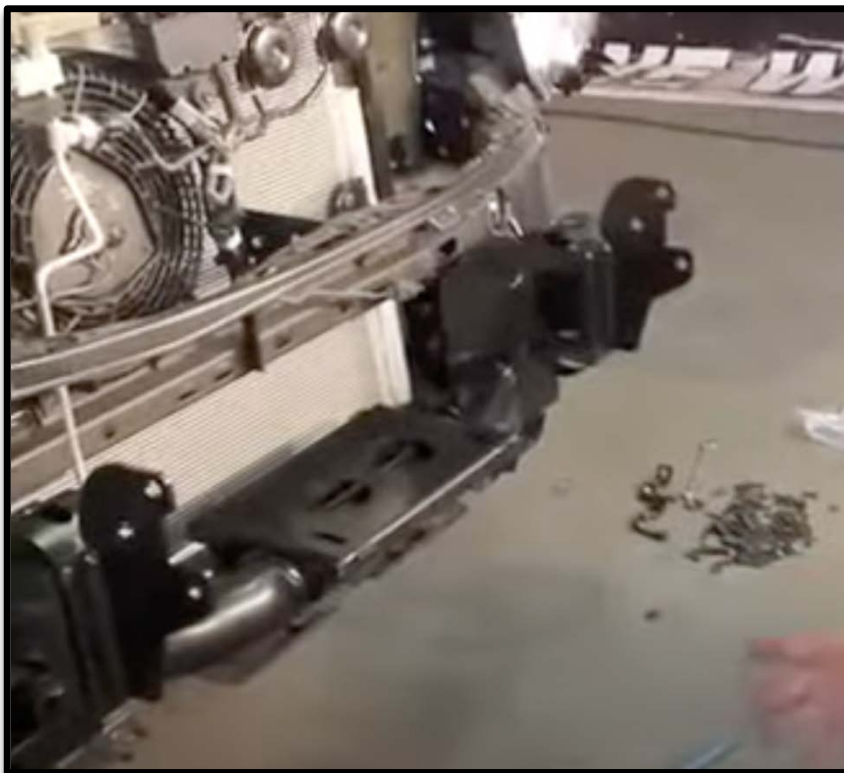


Mount the Bullbar Cradle and
the bolt accordingly



Step 5: Align and Secure the Cradle

Use a measuring tape to ensure the cradle is centered relative to the chassis rails. Tighten all cradle bolts firmly once aligned.

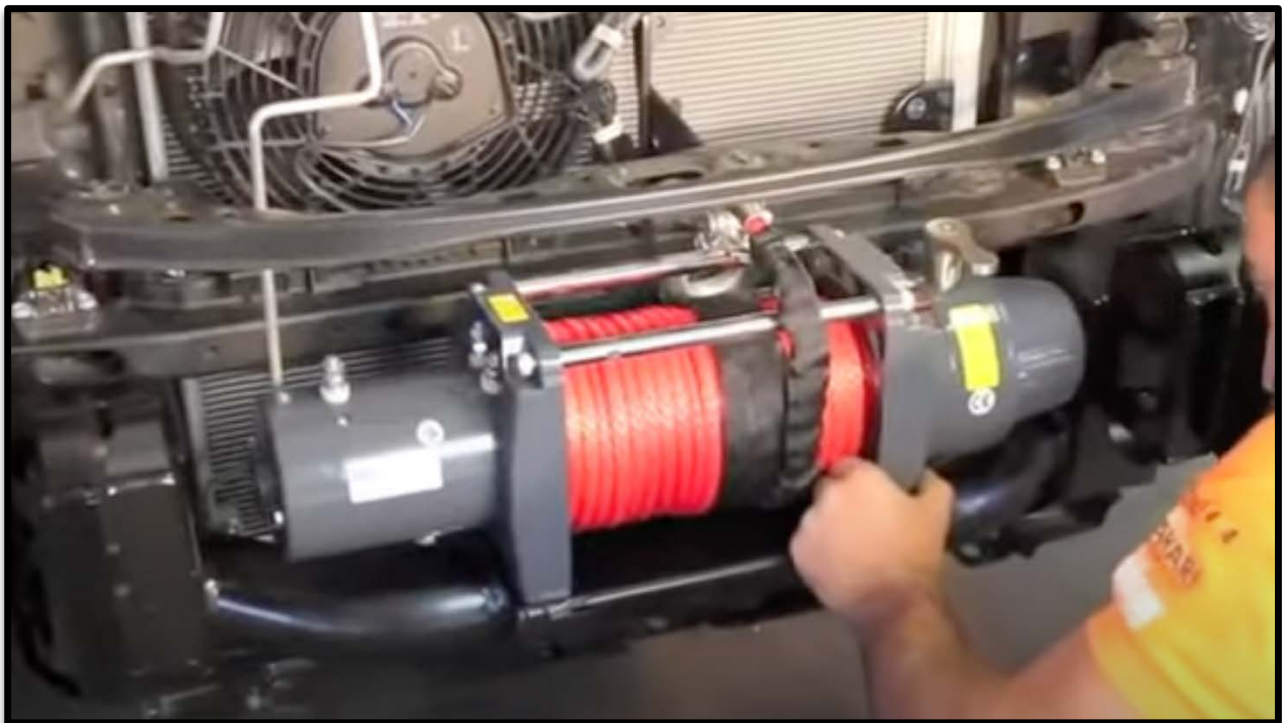


Step 6: Winch Installation (if applicable)

Position your winch on the cradle's winch plate.

Use the 4x mounting bolts to secure the winch.

TIP: Connect your winch earth cable before securing the winch in place, as access becomes difficult later.



Step 7: Pre-Assemble Bullbar

Attach the eyebrow trims loosely (finger-tight) to the bullbar for Model B.

Bumper Cut – Model A (2009–2013) – Original Front Design

If you have **Model A (2009–2013)** with the original front design, a bumper cut is required at this stage before installing the bullbar.

Procedure:

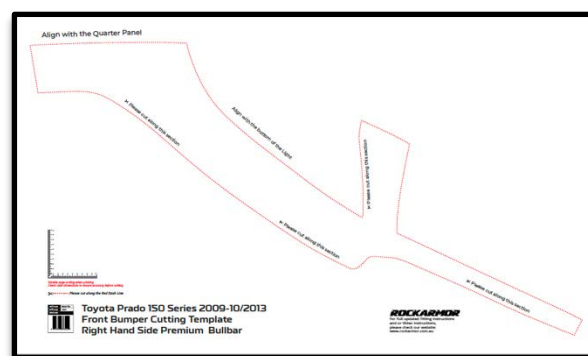
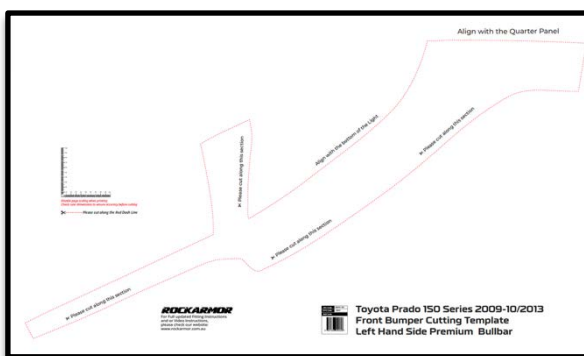
1. Use the supplied cutting templates (examples shown below).
2. Position the templates on the existing plastic bumper bar and secure them with masking tape.
3. Mark the cut section clearly using the template as a guide.
4. Cut along the marked section to match the template.
5. Ensure the cut is accurate and the edges are clean.

Tip for DIY Installers:

If you are not confident making the final cut on the first attempt, you may choose to cut approximately **10 mm inside the marked line**. This will allow you to gradually trim and adjust during a test-fit of the bullbar, giving you more control and peace of mind.

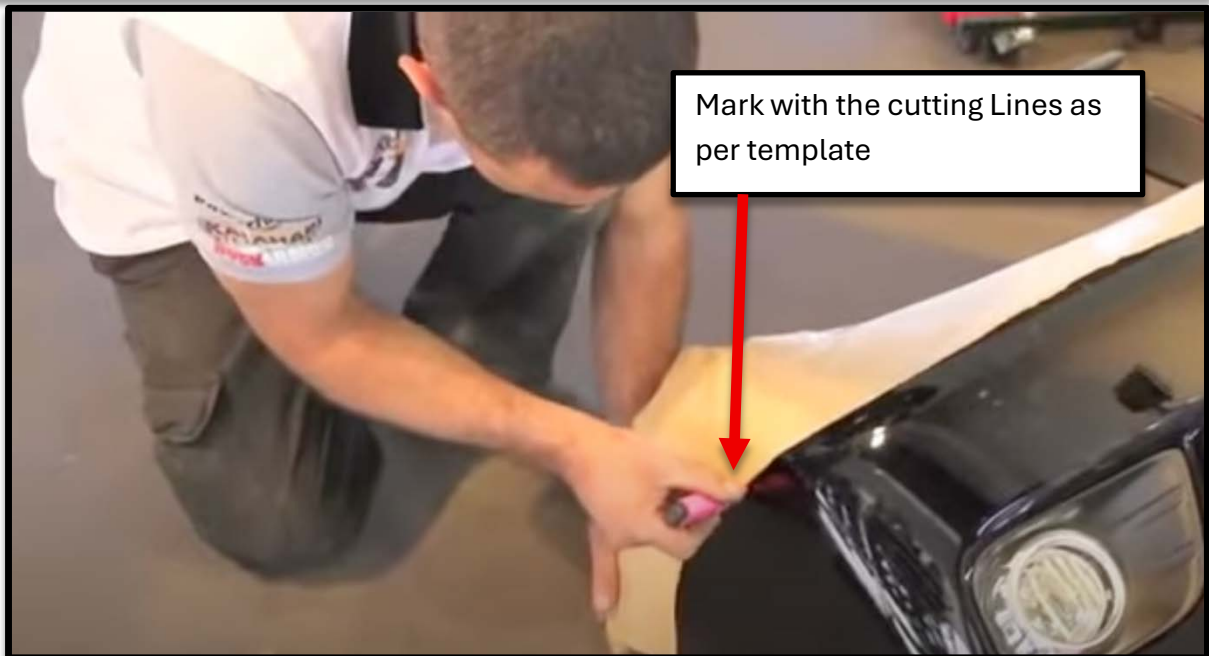
Professional Installation Recommendation:

Professional installers typically make the cut immediately with precision due to their experience. We strongly recommend using a qualified fitter for the best results. However, if you are completing the installation yourself, ensure you follow **all** bullbar fitting steps carefully for a safe and secure result.





Tape Cutting Template to the front Plastic bumper



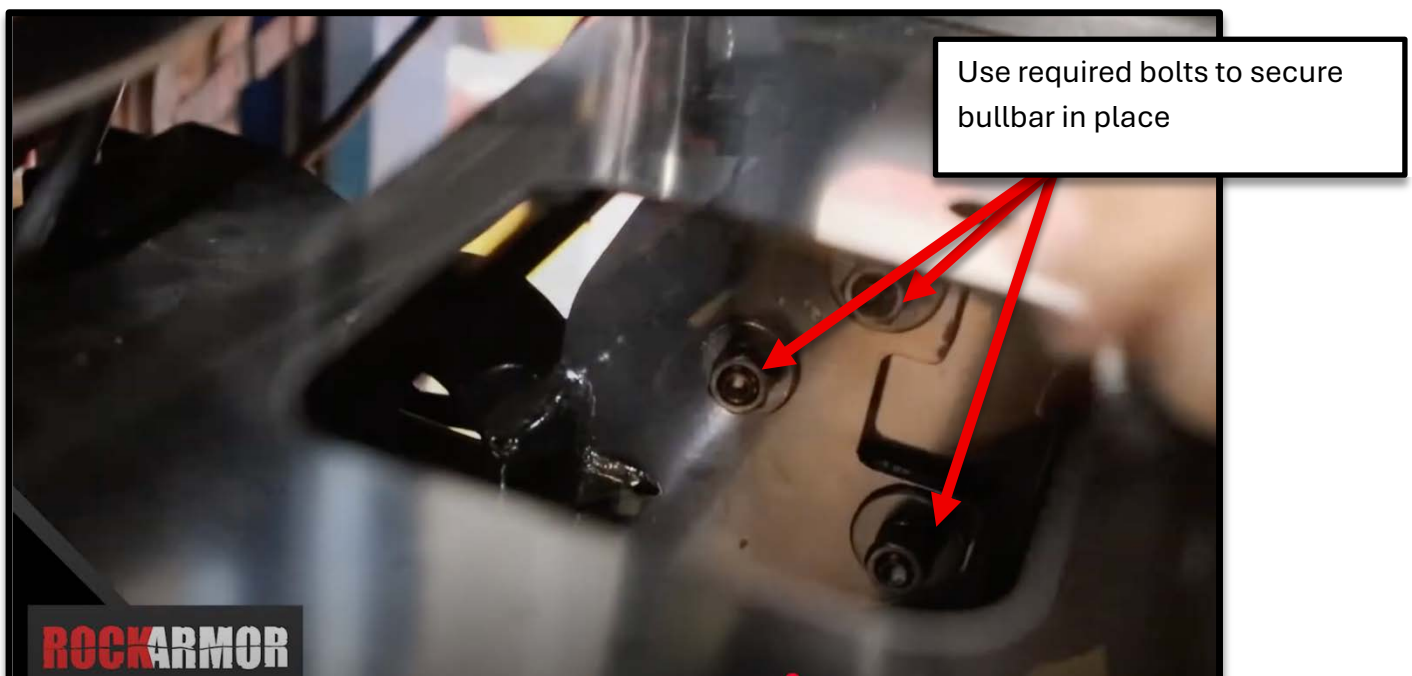
Mark with the cutting Lines as per template



Cut with Suggested Cutting Tools as per marked lines from Template

Step 8: Fit the Bullbar to Cradle

Lift and align the bullbar to sit over the cradle.
Use the 3x mounting bolts per side to loosely fix the bullbar into place.
Leave nuts inside for easier access when tightening with a drill.



Step 9: Adjust Bullbar Fitment

Adjust the bullbar so that the gap between the bar and vehicle guard is approximately 10mm.

Once aligned, tighten all mounting bolts securely.

Temporarily remove the front support bar to access inner nuts with a drill. Reinstall it after tightening.



Adjust to approx. 10mm Gap



Step 10: Final Adjustments

Reinstall Grill and other parts.

Check that gaps are consistent and the bar is flush along both sides.



Step 11: Wiring and Electrical

Tidy and secure winch cables, spotlight wires, and control box wiring underneath using cable ties.

Ensure all wiring is kept clear from moving parts and heat sources.

Tip: Suggest doing the auto electricals for the Parking Lights ,indicators and other Lighting needs.

We strongly advise you employ a qualified auto electrician to complete the auto Electrics on the Vehicle.

Re – Factory front sensors. Install the sensors onto the bar prior to bar installation, this way once the bar has been mounted it's plug and play for sensor electrical connections

Wiring Colour Codes from lights on the Rockarmor Bullbar:

Red - Fog Light

White - Park Light

Yellow - Indicator Light

Black - Earth (Ground)

Step 12: Install Underbody Protection Plates

The Rockarmor premium bar includes a 3-piece protection plate set. Line up each plate with the pre-installed nutserts in the underside of the bullbar. Bolt each plate into place to complete the underside protection.



Secure all bash plates





Tighten all bolts once Bash plates are mounted and correctly secured in place

Step 13: Final Checks

Double-check that all bolts are tightened securely.
Ensure all wiring is safely fastened.
Confirm alignment and gaps are even.
Test winch and spotlight functions.

Final Assembly and Testing

- Description: Tighten all bolts to the specified torque values. Inspect the installation for stability and ensure all components are securely fastened. Test fit the guard to confirm there are no vibrations or misalignments.
- Safety Note: Do not operate the vehicle without completing the final inspection.



Rockarmor Disclaimer

Rockarmor Pty Ltd takes no responsibility for any damages, injuries, or vehicle malfunctions resulting from improper installation or failure to follow the provided fitting instructions. We strongly recommend that the installation of this product be carried out by a qualified and experienced fitter, using the appropriate tools and technical knowledge to ensure safety, performance, and correct fitment.

Any modifications to the product or deviations from the instructed fitting procedures will void all warranties and transfer full responsibility to the installer and/or vehicle owner.

Additionally, it is highly advisable for the vehicle to undergo a suspension upgrade when installing a bullbar — particularly if additional accessories such as a winch or driving lights are fitted. Rockarmor will not be held responsible for any damage to the bullbar or vehicle resulting from inadequate suspension or failure to compensate for increased front-end weight.

Ongoing Fitment Checks & Maintenance:

We strongly recommend that all installed products — including bullbars, side steps, underbody protection, and rear bars — be inspected regularly for secure attachment. This is especially critical after driving on corrugated or rough terrain, or prior to undertaking extended trips.

Bolts and nuts may loosen over time due to ongoing vibrations, flex between the chassis and body, and general off-road stress. To help prevent this:

- Inspect all mounting bolts regularly, especially after rough travel conditions.
- Retorque bolts as needed according to the product-specific requirements.
- Consider using professional-grade thread-locking compound (e.g. Loctite™) on fasteners, in line with advice from a qualified technician.
- Seek professional mechanical advice if you are unsure about correct torque settings or ongoing maintenance practices.

By proceeding with the installation, the installer and/or vehicle owner acknowledges and accepts all risks and responsibilities associated with both the fitting process and long-term maintenance of the product.

Suspension Upgrade Recommendation for Bullbar Installation

Installing a GT Bullbar? It's strongly recommended to upgrade your suspension system to handle the added weight — especially if you're also fitting a winch or other accessories. Failing to do so can cause front-end sag, reduced handling, and long-term damage to panels, lights, and chassis/body mounting points due to excessive flex.

Why It Matters:

The chassis and body of your vehicle move independently. A bullbar is typically mounted directly to the chassis rails. If the suspension isn't properly upgraded to compensate for the additional weight of the bullbar and accessories (like winches), it can result in:

- Uneven body/chassis movement
- Damage to headlights, grilles, and body panels
- Increased wear on suspension and steering components

This movement can be amplified on corrugated roads or off-road terrain, especially in Australian conditions.

Front Suspension Upgrades:

- **Assess the Weight:** Know the combined weight of the bullbar and front-mounted accessories. A winch can add 20–30 kg extra on top of a standard bullbar.
- **Choose the Right Springs:** Use heavy-duty coils rated for the correct weight (+80 kg, +100 kg, etc.). Mismatched springs can cause poor handling or over compression.
- **Match the Shocks:** Fit shock absorbers that complement the spring rate and expected load. This ensures balanced rebound and improved ride control.

Rear Suspension Considerations:

- **Evaluate Rear Loads:** If you're fitting rear bars, drawers, spare carriers, or auxiliary tanks, consider the rear suspension load impact.
- **Upgrade if Needed:** Use heavy-duty springs or add-on solutions like airbag helpers to prevent rear-end sag and uneven vehicle stance.

General Best Practices:

- Total Load Calculation: Always calculate the full combined accessory weight (front and rear) before choosing suspension.
- Different Setups = Different Ratings: A bullbar-only setup requires different front springs than a bullbar + winch combination.
- Get Expert Input: Always consult a suspension or 4WD specialist for a tailored solution based on your setup and usage.
- Inspect Regularly: Post-installation, check the bullbar mounts, suspension components, and wheel alignment periodically.

Final Recommendations:

Aligning your suspension setup with your bullbar and accessory load ensures:

- A safer, smoother ride
- Reduced risk of long-term damage
- Better vehicle control and off-road performance