

ROCKARMOR

Fitting Instructions

Description:	TOYOTA PRADO 150 2013-2017 ELITE BULLBAR
Model:	Prado 150
SKU:	BBRA-150G(TD)



Important Notice:

Before commencing the installation, please ensure you have carefully read and understood all instructions. Rockarmor products are engineered to the highest standards, using premium materials and finishes. This includes sandblasting all raw materials, e-coating to eliminate impurities, and applying a Tiger coat for enhanced durability. Should the product become damaged or scratched during off-road or on-road use, the affected surface must be repaired promptly to maintain longevity. Installation should be carried out by a qualified technician, and it is essential to follow the steps precisely to ensure a secure and proper fit.

Note: Please Read Before Attempting Installation

- This product and its fixings must not be modified in any way unless specified in these fitting instructions.
- Do not remove any labels from the product.
- This product is intended solely for use on the specified vehicle model as outlined in these instructions.
- It is the installer's responsibility to ensure the product is correctly installed, allowing for adequate tolerance between the chassis and body, and ensuring clearances for all components.
- Use Loctite on all nuts and bolts during installation.
- The installation of this product may require specialized tools and should be conducted by an experienced fitter.

For more information about this product, please visit www.rockarmor.com.au.

Liability Waiver:

By proceeding with the installation, you acknowledge that the installer is responsible for following these instructions accurately. Rockarmor Pty Ltd will not be held liable for any damages, injuries, or vehicle malfunctions arising from improper installation or failure to adhere to the provided guidelines. Any modifications or deviations from the instructed process will void any warranties and transfer all risks and liabilities to the installer and/or vehicle owner.

The following tools will be required to install the product.

Hand Tools	Power Tools	Workshop Supplies
Metric Socket Set 10-18MM.	Impact Drill & Bit Set	Loctite
Socket Extension Bar	Electric/Air Impact Driver (Optional)	Cable Ties
Metric Spanner Set 10-18MM.		Masking Tape
Torque Drivers T25-T30		Satin Black Automotive Paint
Trim Removal Tool		Grease and wax Remover.
Screwdriver Set (Flat and Phillips head)		Scotch Brite or Fine sandpaper.
Utility Knife		
Side Cutters		
Pliers		
<p>Standard locking torque</p> <p>M6 - 11Nm M8 - 18Nm M10 - 80 Nm M12 - 90 Nm M16 - 90 Nm</p>		

Occupational Health and Safety (OHS) Guidelines for the Workshop

Hearing Protection

All personnel must wear appropriate hearing protection in high-noise areas or when operating loud machinery to prevent hearing damage.



Eye Protection

Approved safety glasses or goggles must be worn at all times to shield the eyes from debris, chemicals, and other hazardous materials.



Safe Manual Handling Procedures

Use correct lifting techniques to avoid strains and injuries. Where possible, utilize mechanical aids and never exceed personal lifting capacity.



Hazard Awareness and Prevention

Remain vigilant of potential hazards within the workshop. Adhere to all posted warning signs and follow established safety protocols to mitigate risks.



Video Instructions Available

For a comprehensive guide on fitting the GT Bullbar, we highly recommend referring to our detailed video tutorial on YouTube:

<https://www.youtube.com/watch?v=h0-vojSoAbc&t=1s>

This video, created by a qualified fitter and auto electrician, provides clear, step-by-step visual instructions that are easier to follow than written instructions alone.

Wherever additional clarity is needed throughout these fitting instructions, please refer to the video for more details and demonstrations of specific steps.

STEP-BY-STEP INSTALLATION GUIDE

Step 1: Prepare the Vehicle Front

Remove the factory front bumper from the vehicle.
Be sure to also remove the small plastic winglets on both sides (below the headlights) as this is a non-bumper cut installation.



Step 2: Open the Fitting Kit

Confirm the contents of your Rockarmor fitting kit:

2x mounting brackets (LHS & RHS) with integrated recovery points

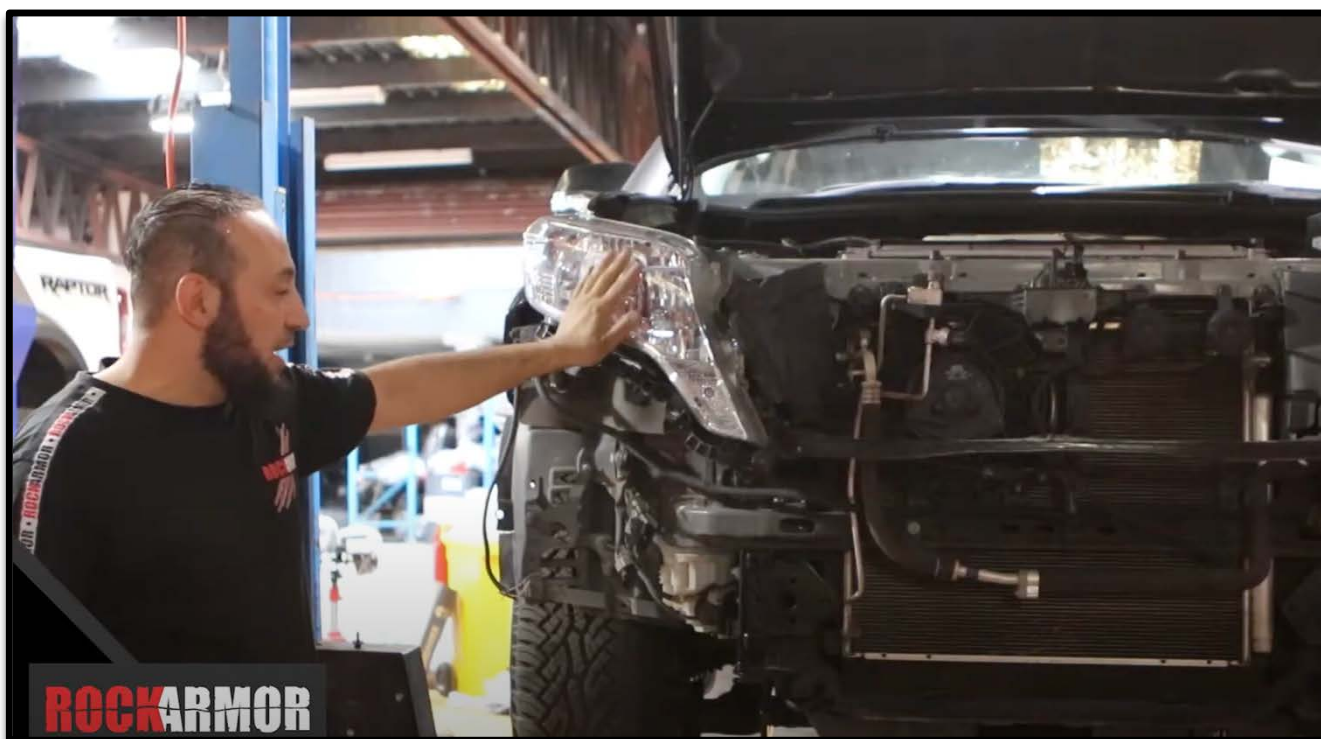
1x cradle

Fasteners, plates with welded nuts, and hardware for cradle and bullbar installation



Step 3: Install Mounting Brackets

Slide each mounting bracket into the rear section of the chassis rail.
Use the supplied fine-thread bolts to mount the bracket to the chassis.
Feed the backing plate (with two welded nuts) inside the chassis to pick up two mounting points per side.



Step 4: Mount the Cradle

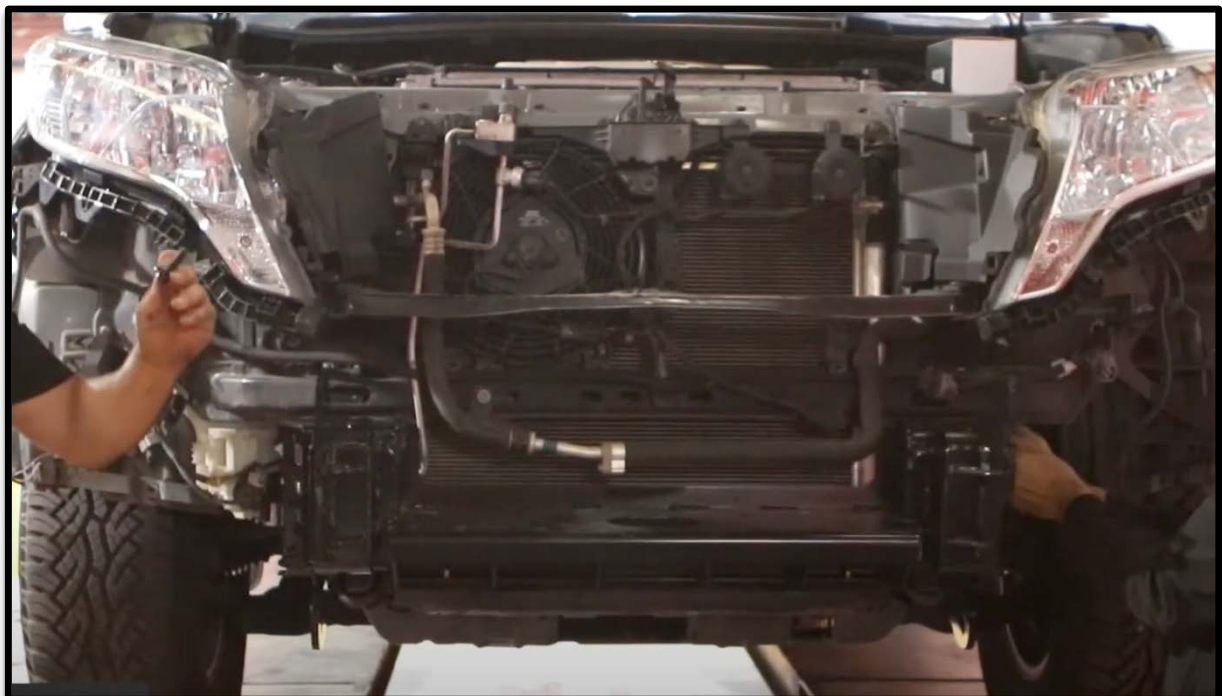
Place the cradle onto the previously installed brackets.

Secure the cradle using:

3x factory bolts for the centre

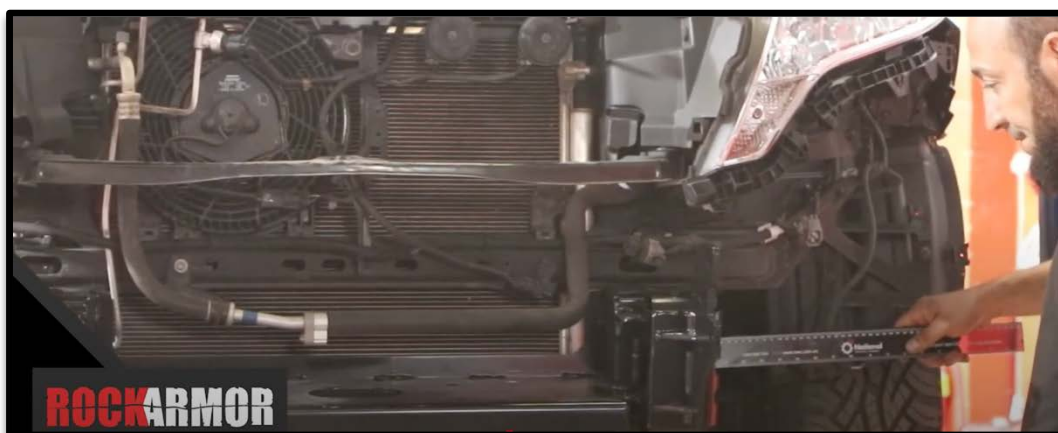
1x bolt with flat and lock washer for the top point

2x bolts for the bottom mounting points



Step 5: Align and Secure the Cradle

Use a measuring tape to ensure the cradle is centered relative to the chassis rails. Tighten all cradle bolts firmly once aligned.

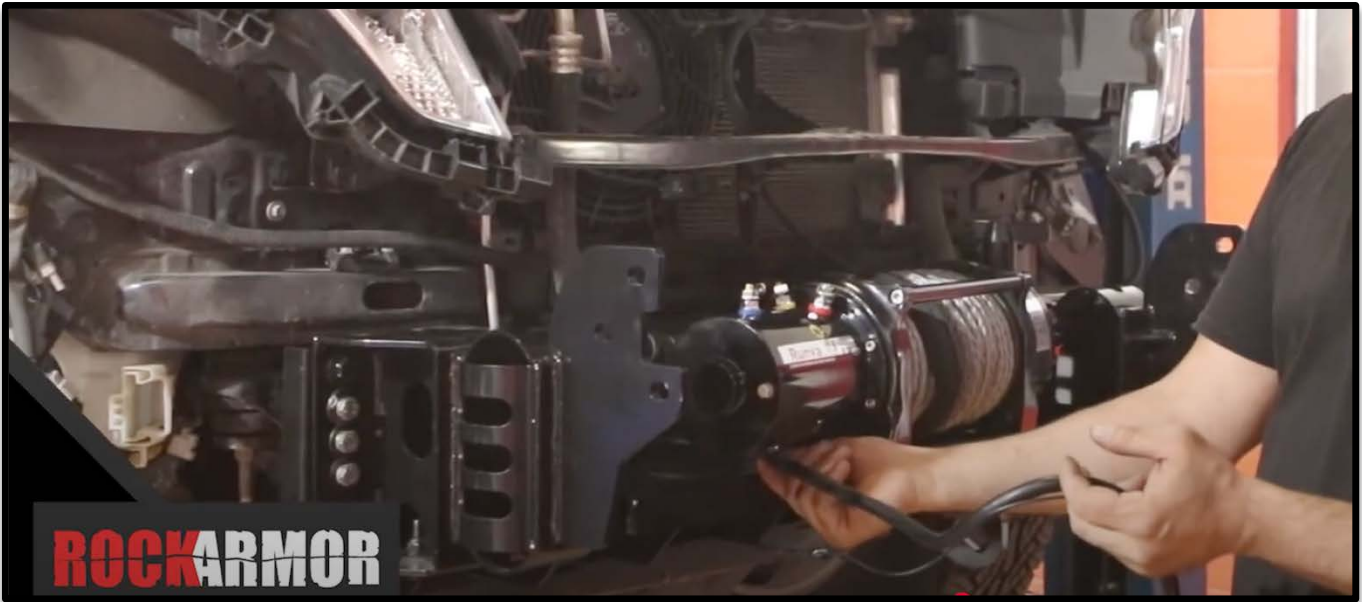


Step 6: Winch Installation (if applicable)

Position your winch on the cradle's winch plate.

Use the 4x mounting bolts to secure the winch.

TIP: Connect your winch earth cable before securing the winch in place, as access becomes difficult later.



Step 7: Pre-Assemble Bullbar

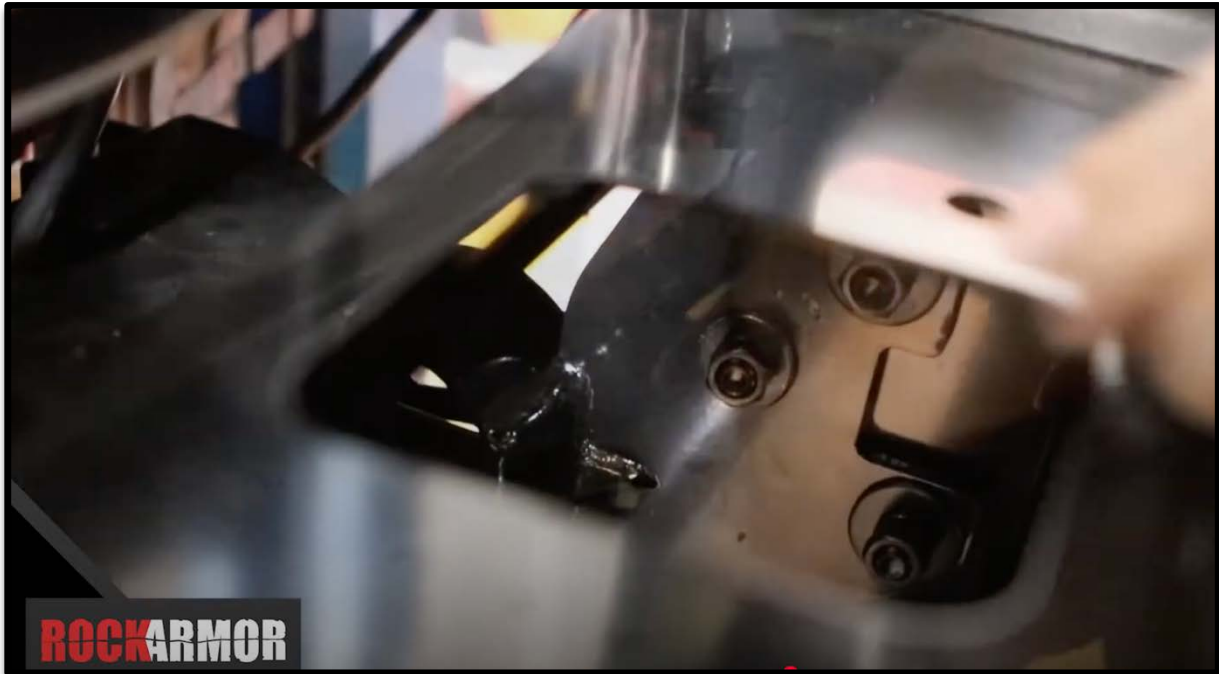
Attach the eyebrow trims loosely (finger-tight) to the bullbar.

Step 8: Fit the Bullbar to Cradle

Lift and align the bullbar to sit over the cradle.

Use the 3x mounting bolts per side to loosely fix the bullbar into place.

Leave nuts inside for easier access when tightening with a drill.



Step 9: Adjust Bullbar Fitment

Adjust the bullbar so that the gap between the bar and vehicle guard is approximately 10mm.

Once aligned, tighten all mounting bolts securely.

Temporarily remove the front support bar to access inner nuts with a drill. Reinstall it after tightening.



Step 10: Final Adjustments

Align the eyebrows with the vehicle guards and tighten them.
Check that gaps are consistent and the bar is flush along both sides.



Step 11: Wiring and Electrical

Tidy and secure winch cables, spotlight wires, and control box wiring underneath using cable ties.

Ensure all wiring is kept clear from moving parts and heat sources.

Tip: Suggest doing the auto electricals for the Parking Lights ,indicators and other Lighting needs.

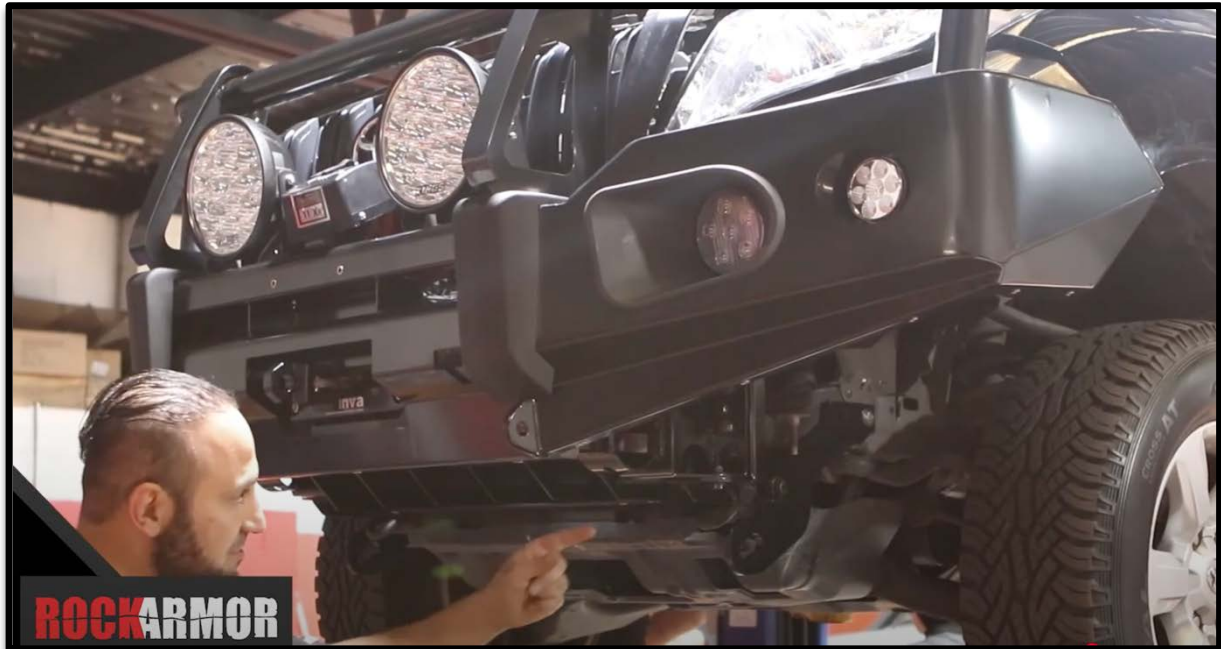
We strongly advise you employ a qualified auto electrician to complete the auto Electrics on the Vehicle.

Re – Factory front sensors. Install the sensors onto the bar prior to bar installation, this way once the bar has been mounted it's plug and play for sensor electrical connections

Wiring Colour Codes from lights on the Rockarmor Bullbar:
Red - Fog Light
White - Park Light
Yellow - Indicator Light
Black - Earth (Ground)

Step 12: Install Underbody Protection Plates

The Rockarmor premium bar includes a 3-piece protection plate set. Line up each plate with the pre-installed nutserts in the underside of the bullbar. Bolt each plate into place to complete the underside protection.





Step 13: Final Checks

Double-check that all bolts are tightened securely.
Ensure all wiring is safely fastened.
Confirm alignment and gaps are even.
Test winch and spotlight functions.

Final Assembly and Testing

- Description: Tighten all bolts to the specified torque values. Inspect the installation for stability and ensure all components are securely fastened. Test fit the guard to confirm there are no vibrations or misalignments.
- Safety Note: Do not operate the vehicle without completing the final inspection.



Rockarmor Disclaimer:

Rockarmor Pty Ltd takes no responsibility for any damages, injuries, or vehicle malfunctions resulting from improper installation or failure to follow the provided fitting instructions. We strongly recommend that the installation of this product be carried out by a qualified and experienced fitter with the appropriate tools and knowledge to ensure safety and proper functionality.

Any modifications to the product or deviations from the instructed procedure will void all warranties and transfer full responsibility to the installer and/or vehicle owner. Additionally, it is highly advisable for the vehicle to have a suspension upgrade when installing a bullbar. Rockarmor will not be responsible for any damage to the bullbar or vehicle if the suspension has not been upgraded. By proceeding with the installation, the installer acknowledges and accepts all risks and liabilities associated with the fitting process.

Suspension Upgrade Recommendation for Bullbar Installation

When installing a GT Bullbar, it is highly recommended to upgrade your vehicle's suspension to accommodate the additional weight of the bullbar and any other accessories, such as a winch. Neglecting to do so can lead to vehicle sag, compromised handling, and potential damage to the vehicle. The chassis and body of the vehicle move independently, and if the suspension has not been tailored to accommodate the additional accessories, you could seriously damage lights, panels, and other components due to excessive movement and stress on mounting points.

Front Suspension Upgrades:

- **Assess the Added Weight:** Determine the combined weight of the bullbar and any front-mounted accessories to ensure proper load distribution.
- **Select Appropriate Springs:** Upgrade to heavy-duty front springs rated for an additional 80 kg or more to maintain proper ride height and handling.
- **Consider Matching Shock Absorbers:** Pairing upgraded springs with compatible shock absorbers can enhance ride quality and control, reducing excessive movement.

Rear Suspension Considerations:

- **Evaluate Rear Accessories:** If adding accessories like rear bars, spare wheel carriers, or additional storage, assess the extra weight imposed on the rear suspension.

- **Upgrade Rear Springs or Add Support:** Installing heavier-duty rear springs or auxiliary support systems, such as airbag spring helpers, can help manage the increased load and prevent rear-end sag.

General Recommendations:

- **Combined Weight Consideration:** When installing multiple accessories, calculate the total additional weight to determine the necessary suspension upgrades.
- **Professional Consultation:** Before making suspension modifications, consult with a suspension specialist to ensure compatibility and optimal performance.
- **Regular Maintenance:** After upgrading, periodically inspect suspension components for wear and ensure all parts are functioning correctly.
- **By aligning your vehicle's suspension with the added weight of accessories, you maintain safety, performance, and the longevity of your vehicle's components. Failing to do so may result in long-term damage and expensive repairs.**