

# ROCKARMOR

## Fitting Instructions

<b>Description:</b>	TOYOTA LANDCRUISER 100 BULLBAR - (FITTING INSTRUCTIONS)
<b>Model:</b>	Landcruiser 100/105
<b>SKU:</b>	SKU: BBRA-100



## Important Notice:

Before commencing the installation, please ensure you have carefully read and understood all instructions. Rockarmor products are engineered to the highest standards, using premium materials and finishes. This includes sandblasting all raw materials, e-coating to eliminate impurities, and applying a Tiger coat for enhanced durability. Should the product become damaged or scratched during off-road or on-road use, the affected surface must be repaired promptly to maintain longevity. Installation should be carried out by a qualified technician, and it is essential to follow the steps precisely to ensure a secure and proper fit.

### Note: Please Read Before Attempting Installation

- This product and its fixings must not be modified in any way unless specified in these fitting instructions.
- Do not remove any labels from the product.
- This product is intended solely for use on the specified vehicle model as outlined in these instructions.
- It is the installer's responsibility to ensure the product is correctly installed, allowing for adequate tolerance between the chassis and body, and ensuring clearances for all components.
- Use Loctite on all nuts and bolts during installation.
- The installation of this product may require specialized tools and should be conducted by an experienced fitter.

For more information about this product, please visit [www.rockarmor.com.au](http://www.rockarmor.com.au).

### Liability Waiver:

By proceeding with the installation, you acknowledge that the installer is responsible for following these instructions accurately. Rockarmor Pty Ltd will not be held liable for any damages, injuries, or vehicle malfunctions arising from improper installation or failure to adhere to the provided guidelines. Any modifications or deviations from the instructed process will void any warranties and transfer all risks and liabilities to the installer and/or vehicle owner.

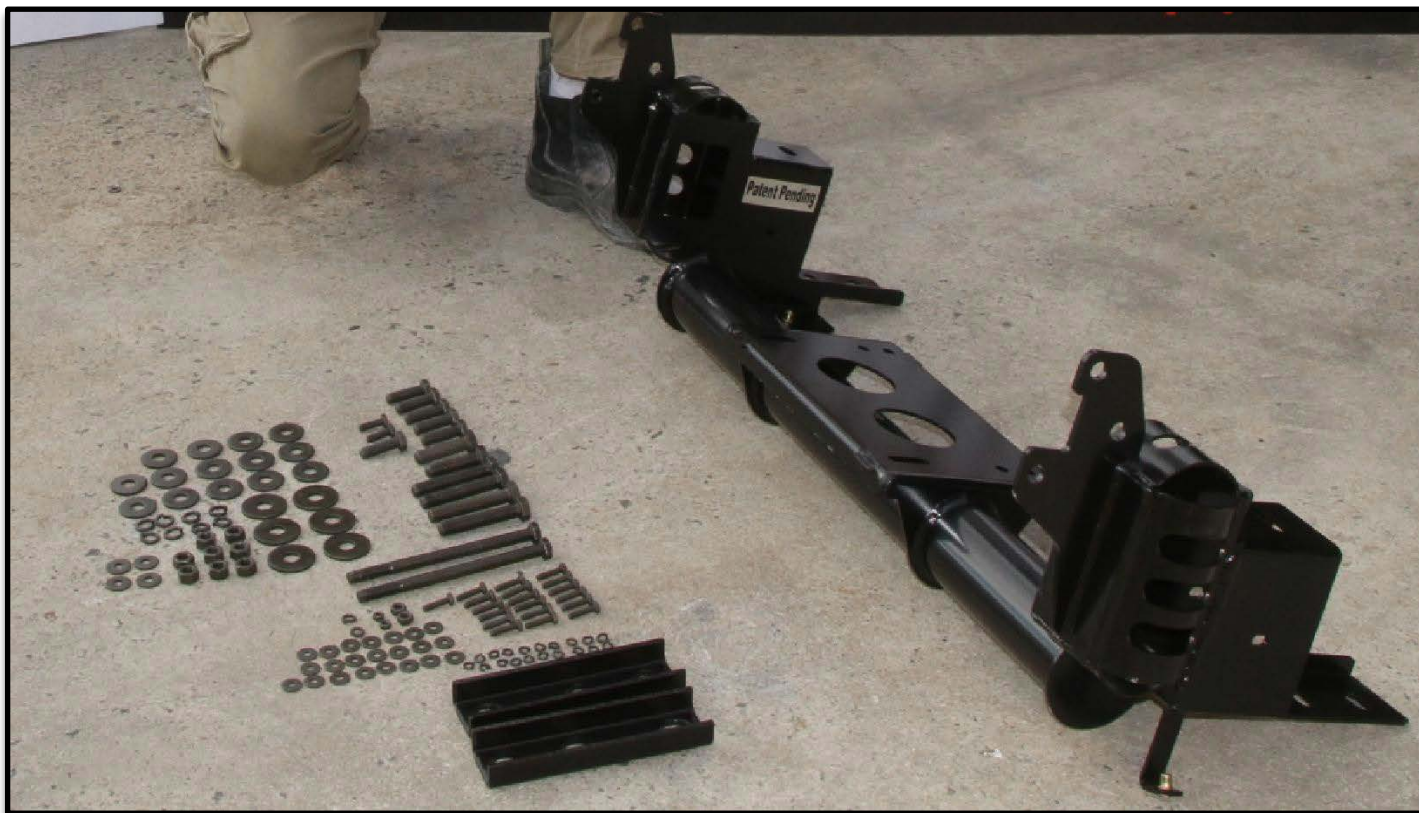
## Components list

### Note:

- 1) This bull bar cannot be installed onto other vehicles , in addition to the manufacturer special instructions
- 2) Do not remove label on the bar.
- 3) Do not change the structure of bull bar.

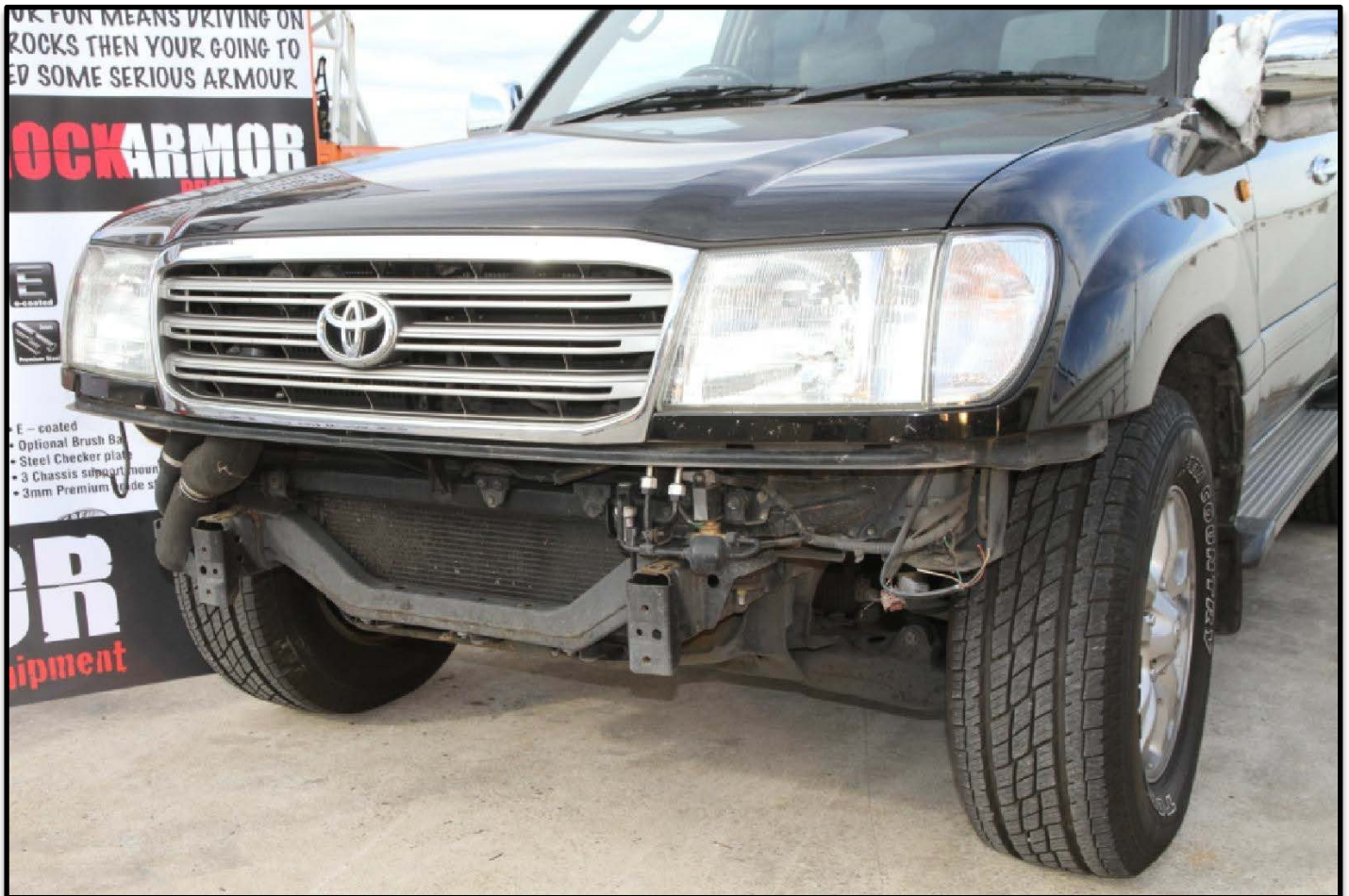
### Standard locking torque

M6 - 11Nm | M8 - 18Nm | M10 - 80 Nm | M12 - 90 Nm | M16 - 90 Nm





## Installation Steps: Removing the Front Bumper



### STAGE ONE – PREPAIRING VEHICLE AND FITTING THE FRONT BAR

- Remove the existing front factory bar from the vehicle
- Unpack bulbar from box
- Unwrap your new Bullbar – please take care when doing so in order to avoid marking the powder coat when unwrapping.
- Check Chassis nuts to insure all are in good condition
- Lay fitting kit out
- Spray all mounting points with WD40 or clean thoroughly

## Install the Winch Cradle/Bracket

- Slide the winch cradle over the chassis rails.
- It is a tight fit – use a soft mallet to tap the cradle evenly from both sides to ensure it seats squarely.
- Ensure all holes align with factory chassis mounts.



### 1. Initial Bolt Installation

Secure all bolts and nuts using the original vehicle hardware or the supplied fasteners. Do not fully tighten at this stage—leave sufficient movement to allow for final adjustment later.

### 2. Bracket Positioning

Push the bracket forward as far as possible to achieve correct alignment.

### 3. Plate Installation

Insert the reference plate (see illustration below) between the underside of the chassis and the mounting bracket.

### 4. Mounting Points

The underside of the chassis contains three mounting points:

- **Two threaded points:** Insert bolts directly into these positions.
- **One non-threaded point:** Insert the long bolt from the bottom upward, through the chassis.

### 5. Final Adjustment

Once all components are in place and correctly aligned, tighten all bolts securely to the manufacturer's torque specifications.

### Secure the Cradle

- Use the **supplied high tensile bolts, washers, and nuts** to secure the cradle.
- Apply a **good-quality thread-locking compound** to all bolt threads before tightening.
- Torque bolts to the recommended specification provided with the kit.



### Please note:

When installing an electronic winch on Rockarmor bullbars, the winch and control box may vary depending on the model, size, and brand. Our provided guide is a general reference designed to accommodate the most common winch types. Installation methods may differ, and multiple configurations are possible, with or without the control box bracket. Please note that for some brands, the control box may be mounted separately depending on its size.

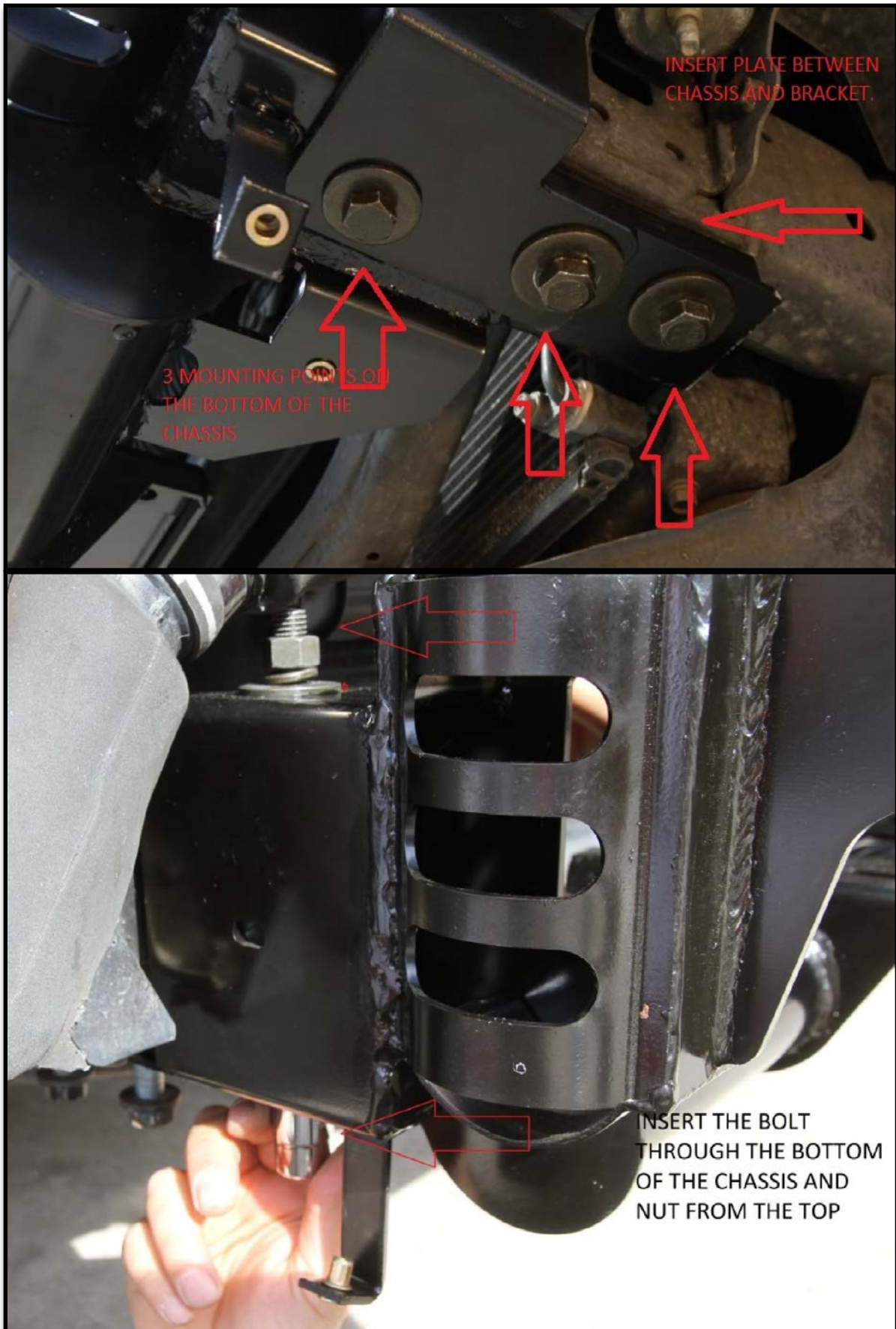




### Install the Spacer Bar

- Locate the gap between the chassis and the cradle once fitted.
- Fit the **spacer bar** into this gap with the **angled edges facing downward**.
- Tighten securely.









### Fit the Bull Bar

- With the cradle now fully secured, it's time to install the **bull bar**.
- Grab a mate to help lift the bull bar into position.
- Carefully place the bull bar onto the cradle mounts.

### Align & Secure the Bull Bar

- Secure the bull bar to the cradle using **six high tensile bolts — three per side**.
- Do not fully tighten at this stage.
- Adjust and **align the bull bar** so it is symmetrical and matches the vehicle's body lines.

Correct alignment is achieved when:

- The **weather strip** between the bull bar and body is **slightly compressed**.
- The **bull bar lines are parallel** to the body panels.
- Once aligned, **fully tighten all six mounting bolts**.





### Fit the Underbody Bash Plates

- Install the **underbody protection plates** using the supplied bolts.
- Ensure all bolts are secure and aligned to prevent rattling or movement off-road.







### Final Checks & Wiring

- Double-check all bolts are tightened to spec.
- If you're installing **a winch, UHF radio, or spotlights**, now is the time to wire them up.
- If unsure with wiring, consult a **licensed auto electrician**.

**Tip:** Suggest doing the auto electricals for the Parking Lights ,indicators and other Lighting needs.

**We strongly advise you employ a qualified auto electrician to complete the auto Electrics on the Vehicle.**

### Wiring Colour Codes from lights on the Rockarmor Bullbar:

**Red - Fog Light**

**White - Park Light**

**Yellow - Indicator Light**

**Black - Earth (Ground)**

# Rockarmor Disclaimer

Rockarmor Pty Ltd takes no responsibility for any damages, injuries, or vehicle malfunctions resulting from improper installation or failure to follow the provided fitting instructions. We strongly recommend that the installation of this product be carried out by a qualified and experienced fitter, using the appropriate tools and technical knowledge to ensure safety, performance, and correct fitment.

Any modifications to the product or deviations from the instructed fitting procedures will void all warranties and transfer full responsibility to the installer and/or vehicle owner.

Additionally, it is highly advisable for the vehicle to undergo a suspension upgrade when installing a bullbar — particularly if additional accessories such as a winch or driving lights are fitted. Rockarmor will not be held responsible for any damage to the bullbar or vehicle resulting from inadequate suspension or failure to compensate for increased front-end weight.

## Ongoing Fitment Checks & Maintenance:

We strongly recommend that all installed products — including bullbars, side steps, underbody protection, and rear bars — be inspected regularly for secure attachment. This is especially critical after driving on corrugated or rough terrain, or prior to undertaking extended trips.

Bolts and nuts may loosen over time due to ongoing vibrations, flex between the chassis and body, and general off-road stress. To help prevent this:

- Inspect all mounting bolts regularly, especially after rough travel conditions.
- Retorque bolts as needed according to the product-specific requirements.
- Consider using professional-grade thread-locking compound (e.g. Loctite™) on fasteners, in line with advice from a qualified technician.
- Seek professional mechanical advice if you are unsure about correct torque settings or ongoing maintenance practices.

By proceeding with the installation, the installer and/or vehicle owner acknowledges and accepts all risks and responsibilities associated with both the fitting process and long-term maintenance of the product.

# Suspension Upgrade Recommendation for Bullbar Installation

Installing a GT Bullbar? It's strongly recommended to upgrade your suspension system to handle the added weight — especially if you're also fitting a winch or other accessories. Failing to do so can cause front-end sag, reduced handling, and long-term damage to panels, lights, and chassis/body mounting points due to excessive flex.

## Why It Matters:

The chassis and body of your vehicle move independently. A bullbar is typically mounted directly to the chassis rails. If the suspension isn't properly upgraded to compensate for the additional weight of the bullbar and accessories (like winches), it can result in:

- Uneven body/chassis movement
- Damage to headlights, grilles, and body panels
- Increased wear on suspension and steering components

This movement can be amplified on corrugated roads or off-road terrain, especially in Australian conditions.

## Front Suspension Upgrades:

- **Assess the Weight:** Know the combined weight of the bullbar and front-mounted accessories. A winch can add 20–30 kg extra on top of a standard bullbar.
- **Choose the Right Springs:** Use heavy-duty coils rated for the correct weight (+80 kg, +100 kg, etc.). Mismatched springs can cause poor handling or over compression.
- **Match the Shocks:** Fit shock absorbers that complement the spring rate and expected load. This ensures balanced rebound and improved ride control.

## Rear Suspension Considerations:

- **Evaluate Rear Loads:** If you're fitting rear bars, drawers, spare carriers, or auxiliary tanks, consider the rear suspension load impact.
- **Upgrade if Needed:** Use heavy-duty springs or add-on solutions like airbag helpers to prevent rear-end sag and uneven vehicle stance.



## General Best Practices:

- **Total Load Calculation:** Always calculate the full combined accessory weight (front and rear) before choosing suspension.
- **Different Setups = Different Ratings:** A bullbar-only setup requires different front springs than a bullbar + winch combination.
- **Get Expert Input:** Always consult a suspension or 4WD specialist for a tailored solution based on your setup and usage.
- **Inspect Regularly:** Post-installation, check the bullbar mounts, suspension components, and wheel alignment periodically.

## Final Recommendations:

Aligning your suspension setup with your bullbar and accessory load ensures:

- A safer, smoother ride
- Reduced risk of long-term damage
- Better vehicle control and off-road performance