

Tools and Materials Needed:

- Stainless steel snorkel kit
- Drill with various bit sizes (including a hole saw) (battery or air-driven recommended)
- Screwdrivers (battery-driven recommended)
- Spanners and socket set (battery-driven recommended)
- Masking tape
- Marker
- Scissors
- Measuring tape
- Silicone sealant
- Rust-proof paint (to treat cut metal)
- Sandpaper or a Fine metal file
- Template (provided with the snorkel kit)
- Safety glasses and gloves
- Pop Rivet Gun (air-based or standard handheld)

Instructions:

1 Preparation:

- **Safety Note:** Always wear safety glasses and gloves and any other PPE Gear if needed.
- Park the vehicle on a flat, level surface. Ensure the engine is cool and disconnect the negative battery terminal if needed.
- Lay out all the components of the snorkel kit and ensure everything is included and undamaged prior to installation.

2 Remove Necessary Parts:

- Remove the front left wheel for easier access. (Optional)
- Remove the inner fender (Quarter Panel) liner on the left side to access the inner guard.
- Remove the air filter box from the engine bay to create space for installing the snorkel.

3 Position the Template:



- Clean the area where the snorkel will be installed.
- Apply masking tape to the outside of the fender where the template will be placed. This protects the paint and provides a good surface to mark on.
- Position the template provided with your snorkel kit onto the fender, ensuring it is correctly aligned.
- Use a marker to trace the hole positions onto the masking tape or mark directly onto the Quarter Panel and Mask around it.

4 Drill and Cut:



- Start by drilling a pilot hole within the cut-out section.
- Use an air saw to cut the main hole for the snorkel tube as per photo and the template.



- After drilling, use sandpaper or a file to smooth any rough edges around the holes. Apply rust-proof paint to the bare metal edges to prevent corrosion.

5 Install the Pinch weld and the Snorkel Body:

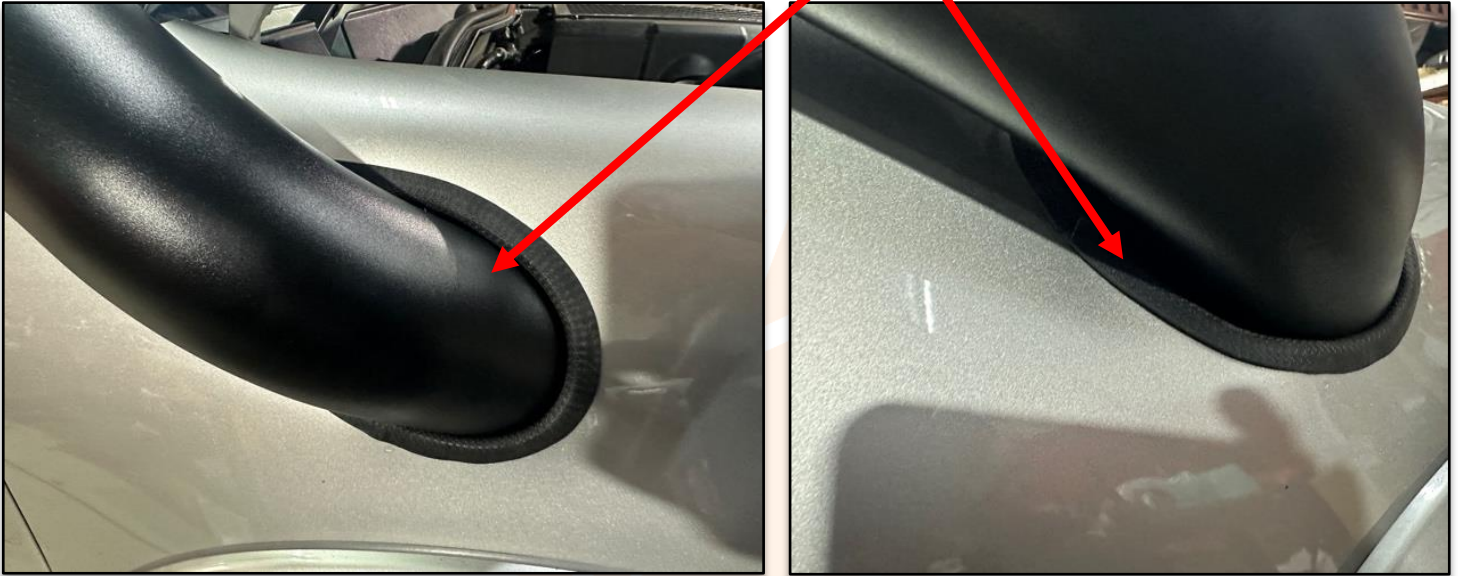


Note: Mounting Bracket/Plate to be used as a support mount for the snorkel, install to the provided mounting plate. Connecting the snorkel to the mounting bracket



Note: Install the Pinch Weld on the surrounds of the cut out section, cut to size.

- Insert the Snorkel through the Cut-out, (Spray WD40 or similar lubricant to assist in inserting the snorkel into the cut-out.)



6 Connect to the Airbox:

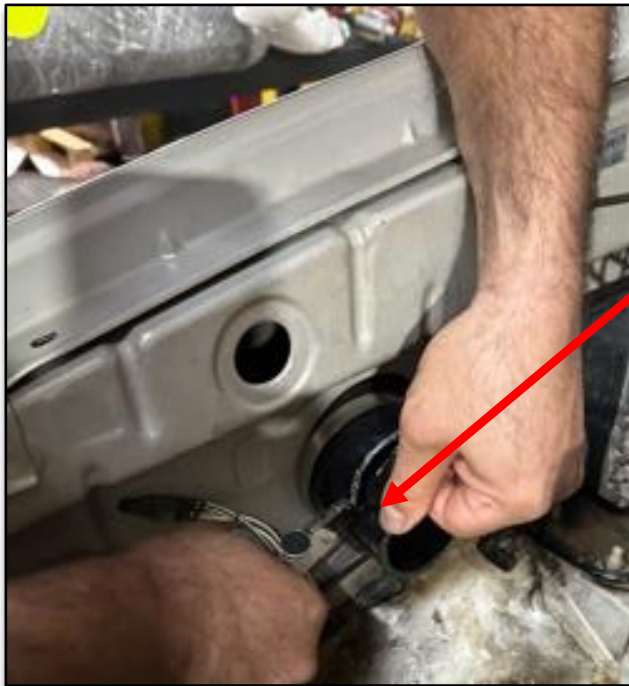


Note: 75mm (3" Inch)
Silicon Pipe will be fed
through the factory cut so it
connects directly to the
airbox

- Inside the engine bay, connect the snorkel to the airbox using the provided hose and clamps.



Note: 75mm (3" Inch) Silicon Pipe will be fed through the factory cut so it connects directly to the airbox



Note: If an after Market Airbox is fitted then the Silicone hose may need to be cut accordingly



Ensure all connections are tight and secure to prevent any leaks.

- If necessary, modify the airbox or use an adapter to ensure a proper fit with the snorkel hose.



Note: Once the Snorkel sit comfortably through the quarter panel and place into the airbox, then mount the mounting plate from the snorkel to the Drivers side upright support. Mark the 3 holes, drill, apply a bead of Silicone and then rivet the snorkel into the drilled holes



Reinstall Removed Parts:

- Reattach the inner fender (Quarter Panel) liner.
- Reinstall the front left wheel.
- Reconnect the air filter box and any other components removed during preparation.
- Check all bolts and connections for tightness.

7 Final Checks:

- **Photo Suggestion:** Take a photo of the completed installation.
- Reconnect the negative battery terminal.
- Start the engine and check for any air leaks around the snorkel connections. If any are found, apply additional silicone sealant as needed.
- Ensure the snorkel is securely mounted and does not interfere with the vehicle's operation.

8 Clean-up:

- Remove any masking tape from the vehicle.
- Clean up the work area and dispose of any debris or old parts properly. Note: Many older parts can be recycled.

By following these detailed steps, you should be able to successfully install a stainless-steel snorkel on a N70 Toyota Hilux. If you encounter any difficulties please seek professional assistance.

Disclaimer:

Roar4x4 advises and encourages the owner of the vehicle to use a professional installer for snorkel installation. If you feel confident in your DIY skills, follow the instructions provided. Roar4x4 takes no responsibility for any damage or issues arising from the installation process. Incorrect installation due to substandard tools or improper techniques can lead to a misfit or substandard fitting of the snorkel. Professional tools are recommended for the best results. The tools and materials listed are guidelines, and other professional tools can be used if available.

A large, light gray watermark of the Roar 4x4 logo is centered on the page. It consists of the word "ROAR" in a large, bold, sans-serif font, with "4x4" in a smaller font below it.