



**Stainless Steel Snorkel**  
**Installation Guide for Toyota Landcruiser 200 Series**  
**(11/2007-10/2021) Snorkel Template**



SKU: 1330025S

MPN: WS000126

BC: 9361171000369

## Occupational Health and Safety (OHS) Guidelines for the Workshop

### Hearing Protection

All personnel must wear appropriate hearing protection in high-noise areas or when operating loud machinery to prevent hearing damage.



### Eye Protection

Approved safety glasses or goggles must be worn at all times to shield the eyes from debris, chemicals, and other hazardous materials.



### Safe Manual Handling Procedures

Use correct lifting techniques to avoid strains and injuries. Where possible, utilize mechanical aids and never exceed personal lifting capacity.



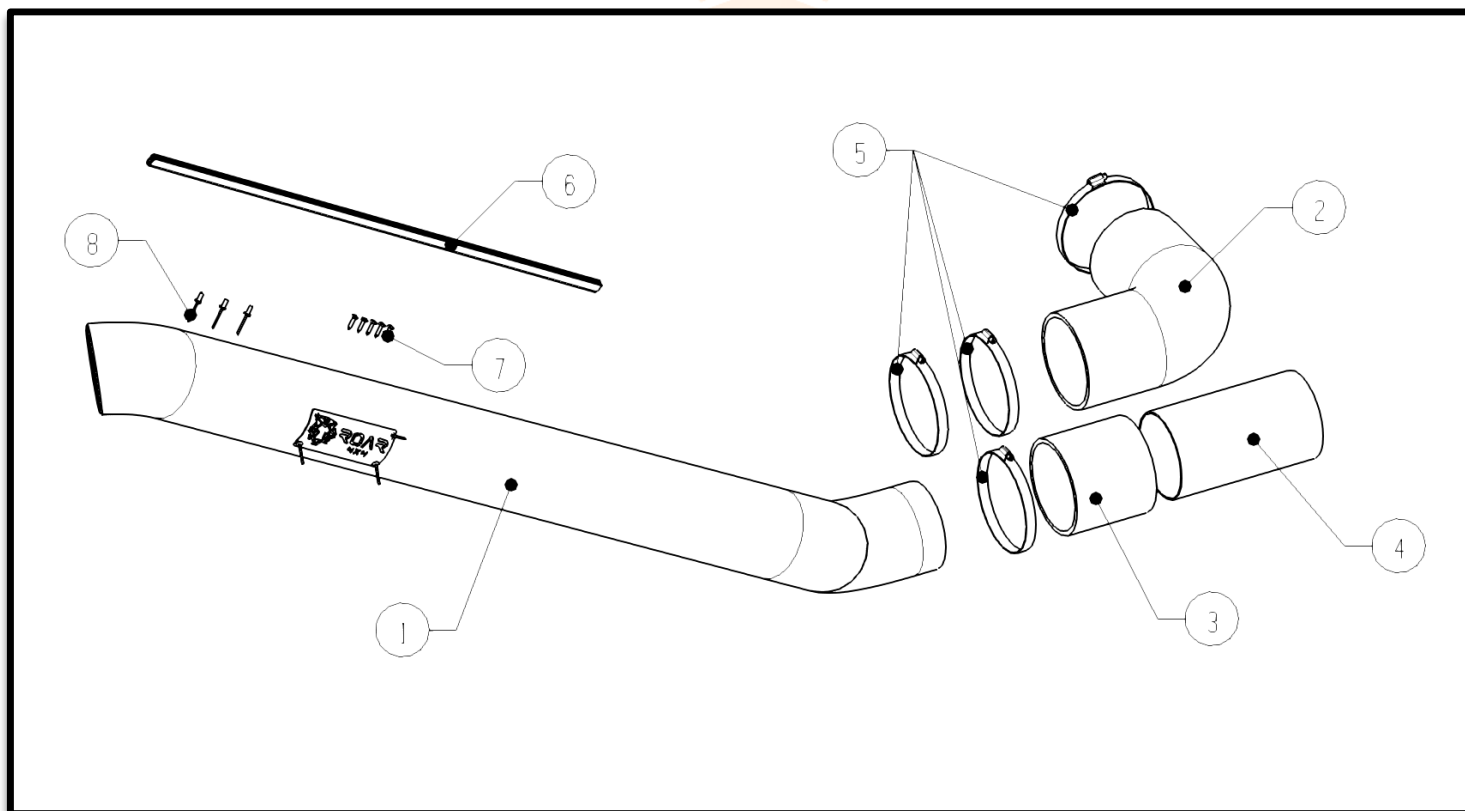
### Hazard Awareness and Prevention

Remain vigilant of potential hazards within the workshop. Adhere to all posted warning signs and follow established safety protocols to mitigate risks.



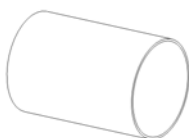
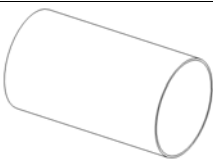



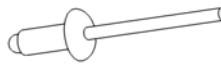


## Tools and Materials Needed:

Hand Tools	Power Tools	Workshop Supplies
Metric Socket Set	Impact Drill & Bit Set	Safety glasses and gloves
Socket Extension Bar	Electric/Air Impact Driver (Optional)	Marker
Metric Spanner Set	Pop Rivet Gun/ Electric/Air	Masking Tape
Screwdriver Set (Flat and Phillips head)	Electric Air Saw	Rust-proof paint (to treat cut metal)
Trim Removal Tool		Scotch Brite or Fine sandpaper or a Fine metal file
Pop Rivet Gun		Measuring tape
Utility Knife		Silicone sealant
Side Cutters		Scissors
Pliers		
<b>Stainless steel snorkel kit</b> Cutting Template (provided with the snorkel kit) Components List Below		



### Components List

Item	Description	Qty	Item	Description	Qty
1	 LC200 Snorkel	1	2	 4 inch Silicone Elbow	1
3	 4 inch Silicone	1	4	 4 inch SUS304 tube	1
5	 100-120 Clamp	4	6	 Pinch-weld(650mm)	1
7	 Self-tapping screw ST3.5x16	5	8	 Rivet D4x10	3

## Instructions:

### Preparation:

**Safety Note:** Always wear safety glasses and gloves and any other PPE Gear if needed.

- Please read the fitting instructions thoroughly prior to installation.
- Park the vehicle on a flat, level surface. Ensure the engine is cool and disconnect the negative battery terminal if needed.
- Lay out all the components of the snorkel kit and ensure everything is included and undamaged prior to installation.

### Remove Necessary Parts:

- Remove the front left wheel for easier access. (Highly advisable but Optional)
- Remove the inner fender (Quarter Panel) liner on the left side to access the inner guard.



Picture showing inner guard removed

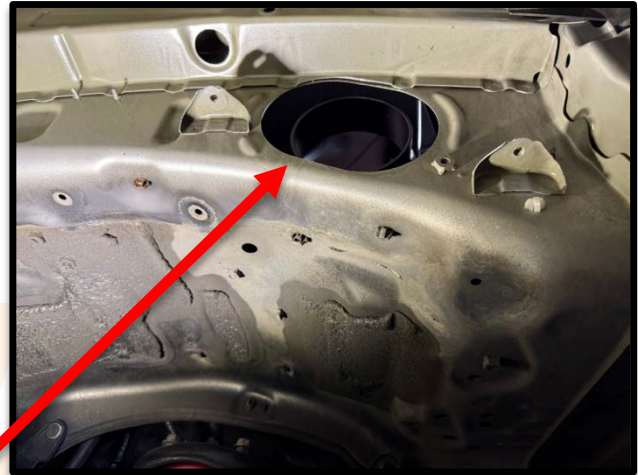


- Remove the air filter box from the engine bay to create space for installing the snorkel.



Remove existing air intake pipe, bolts etc





Remove existing air intake pipe, bolts etc

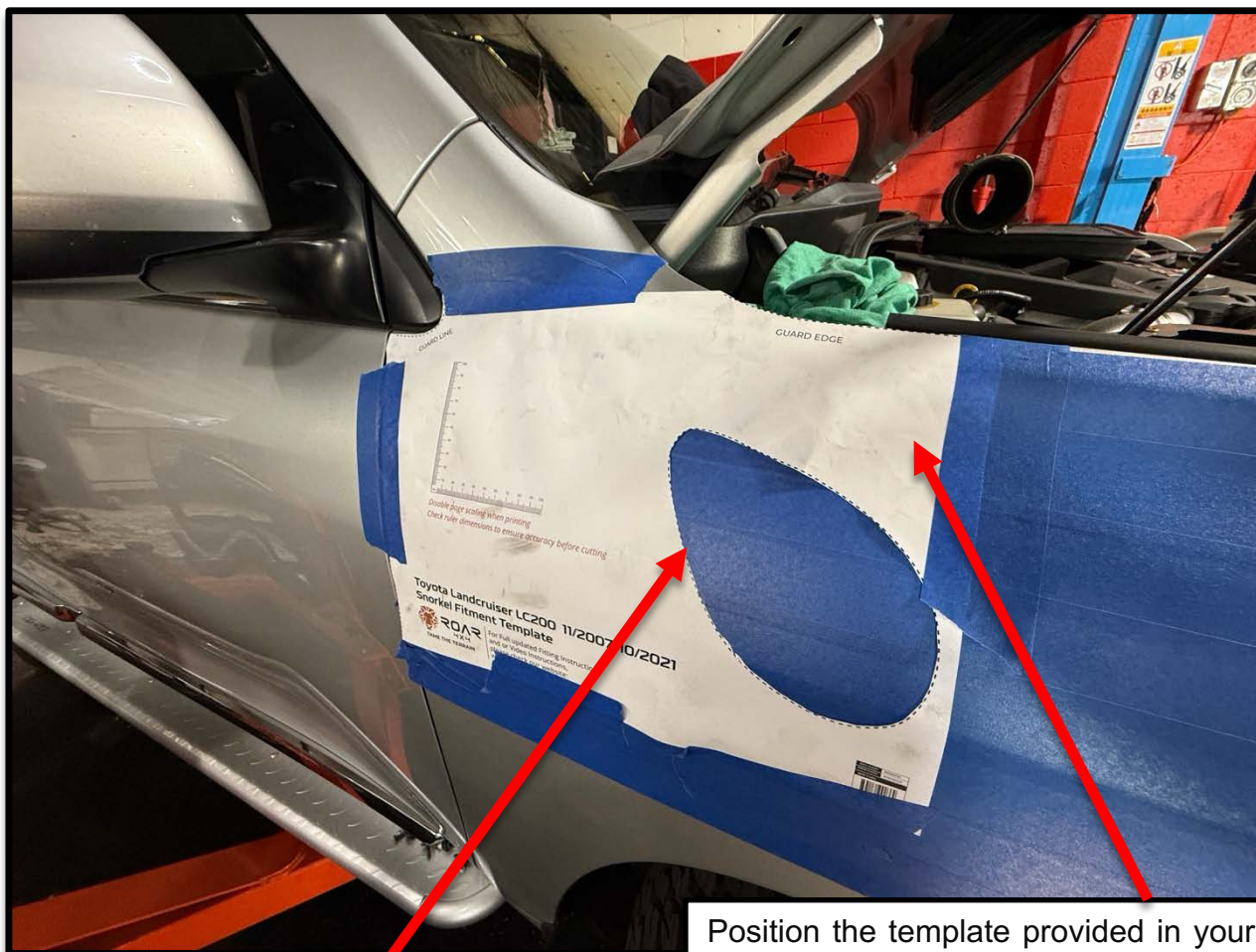
#### Position the Template:

- Clean the area where the snorkel will be installed.



Apply masking tape to the outside of the fender where the template will be placed. This protects the paint and provides a good surface to mark on



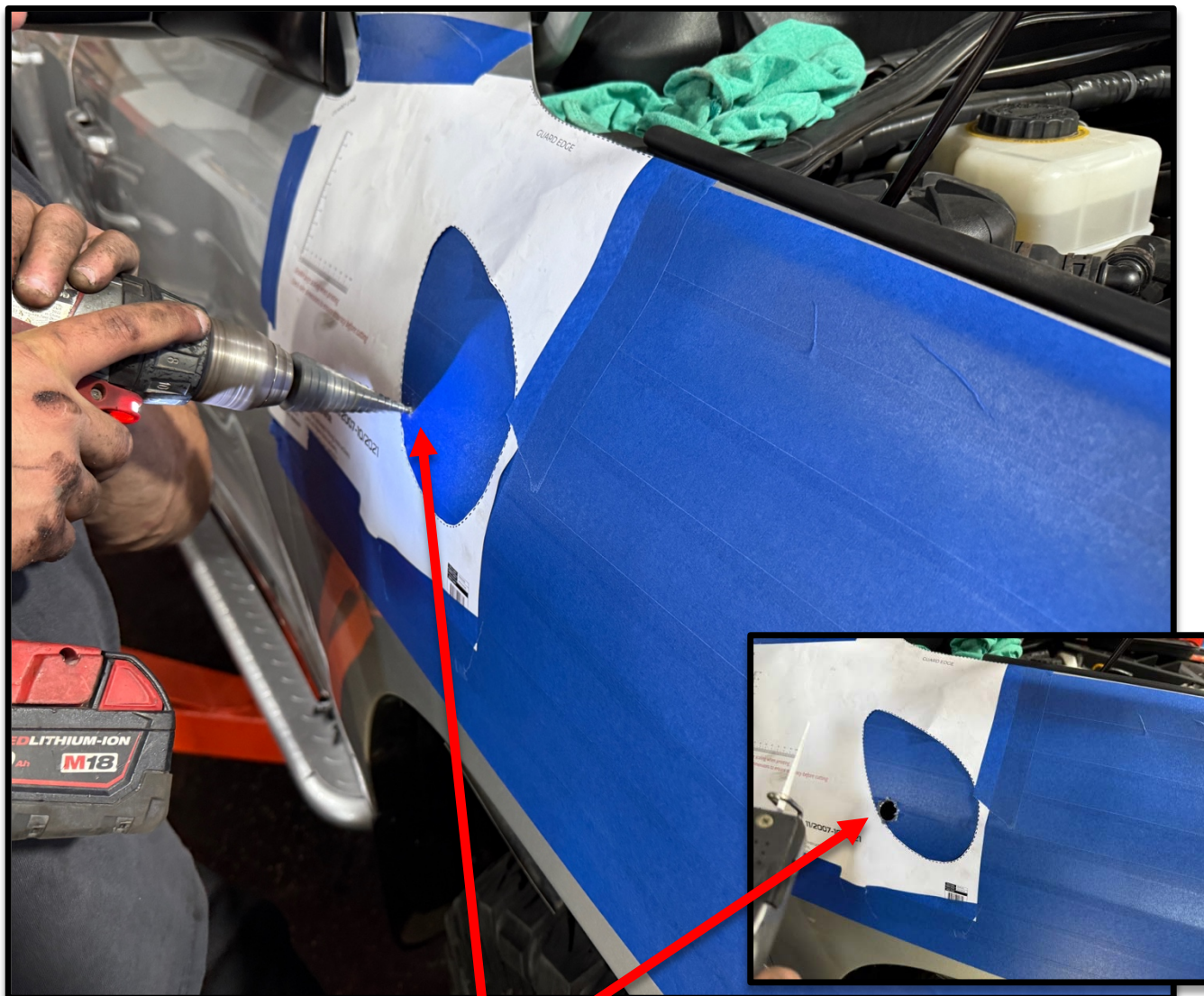


Use a marker to trace the hole positions onto the masking tape or mark directly onto the Quarter Panel and Mask around it.

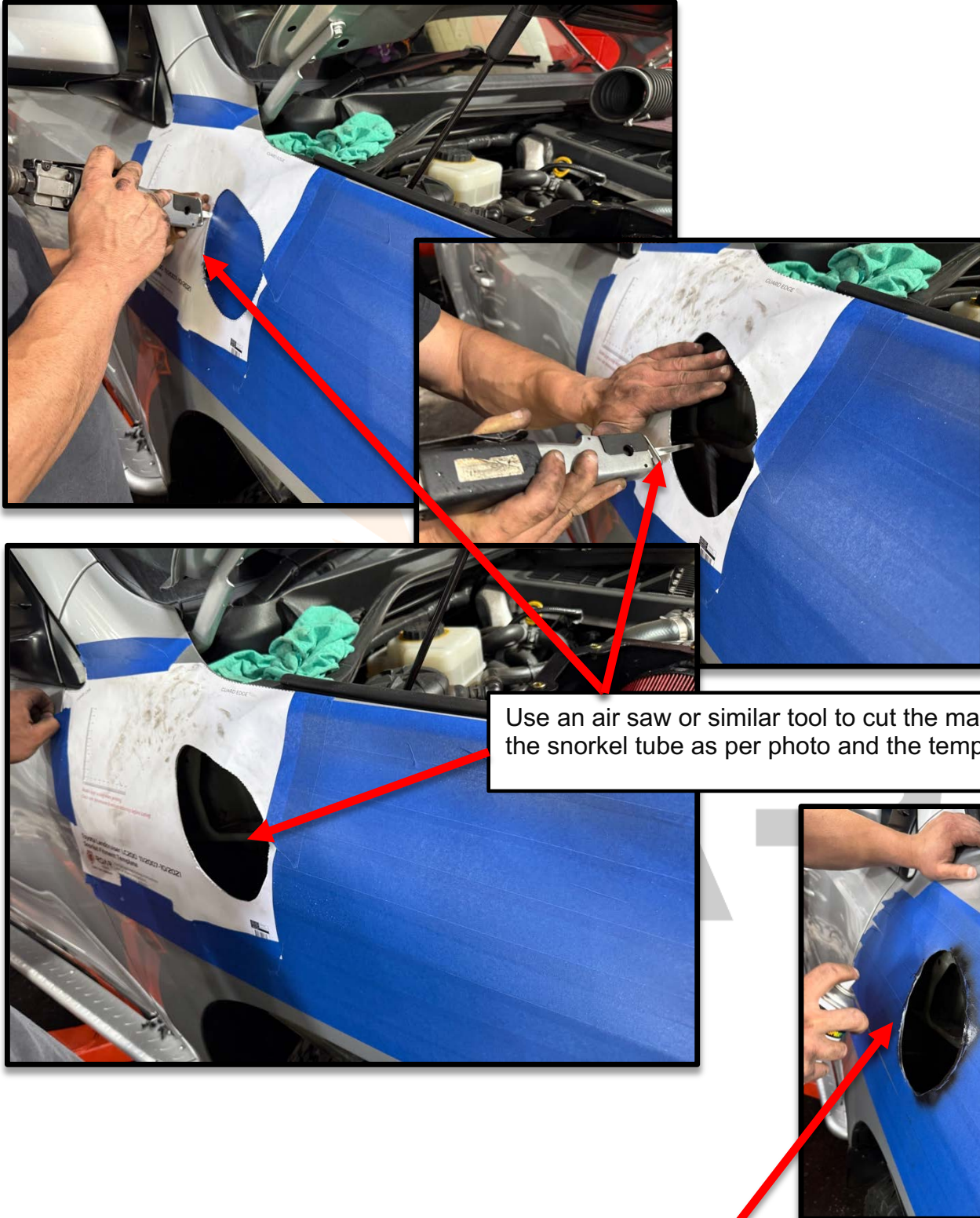
Position the template provided in your snorkel kit onto the vehicle's fender, ensuring it is properly aligned. The template outlines the minimum cut-out required to allow for a snug fit. Depending on your level of expertise, you may choose to enlarge the opening slightly to ease installation. However, doing so may result in a wider gap between the snorkel and the panel once fitted. This decision comes down to personal preference between a tighter finish and a more forgiving installation process. We recommend marking and cutting 5mm smaller than the template to check alignment and then cut again on the marked area as per template



Drill & Cut



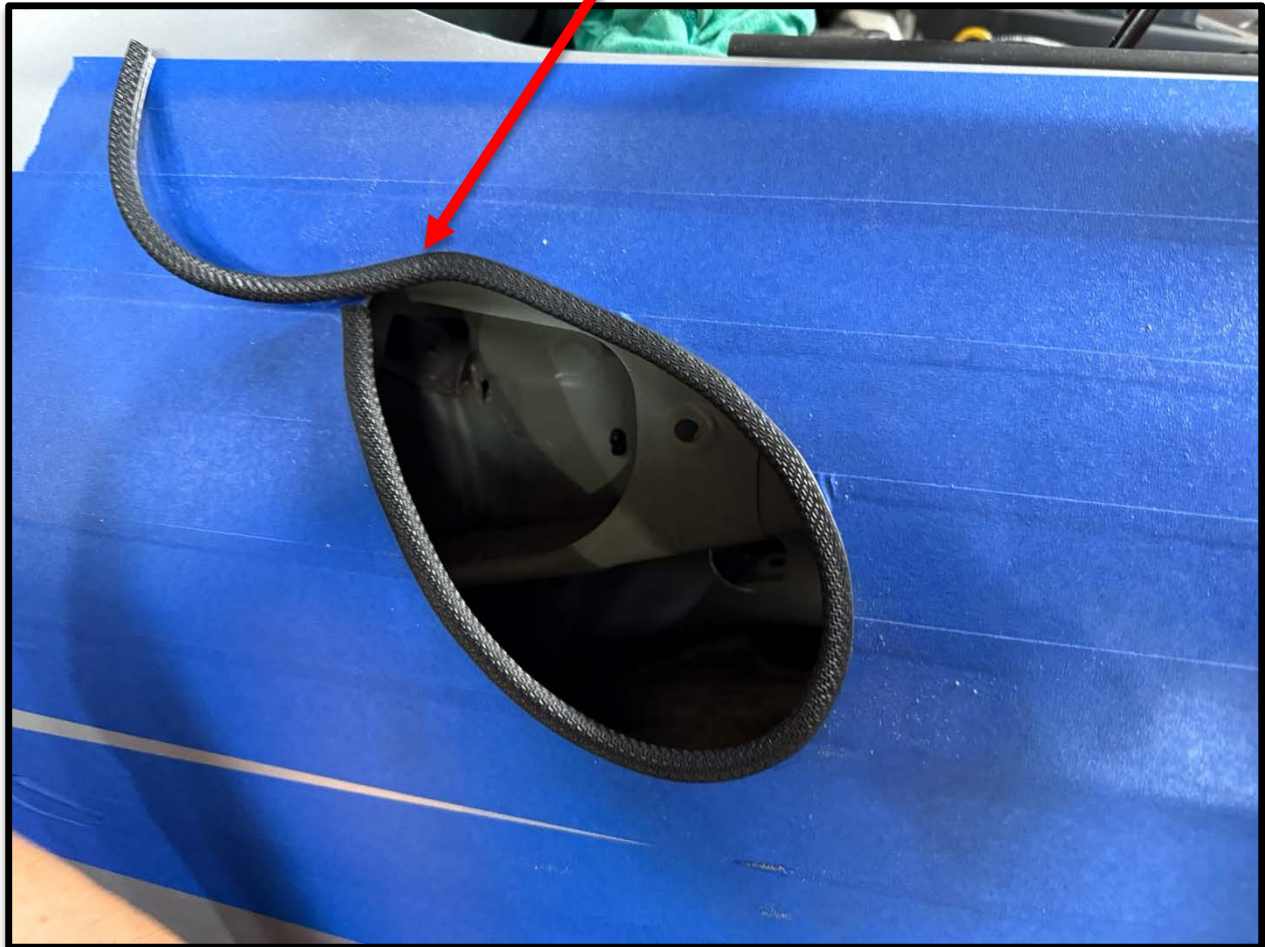
Start by drilling a pilot hole within the cut-out section.



After drilling, use sandpaper and/or a file to smooth any rough edges around the holes. Apply rust-proof paint to the bare metal edges to prevent corrosion.



Note: Install the Pinch Weld on the surrounds of the cut-out section, cut to size.

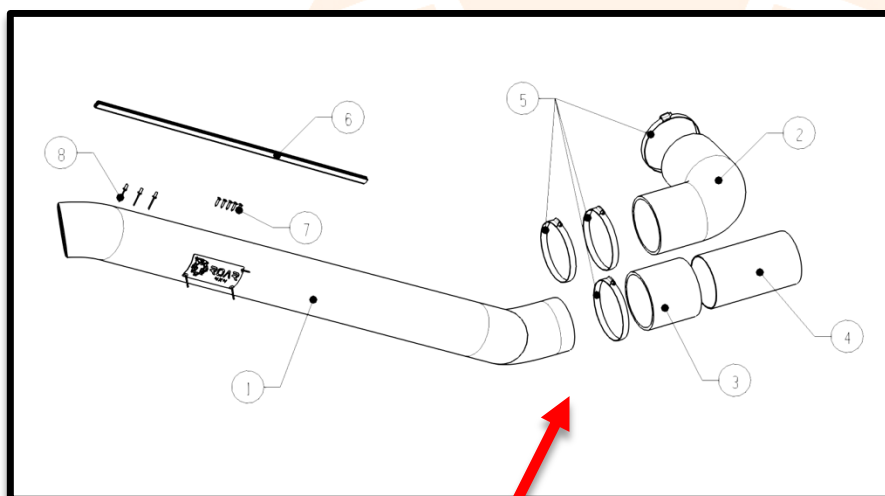


Before inserting the Snorkel, bellow out the inner section of the guard if needed to allow the snorkel to move in freely.

Before inserting the Snorkel, wrap the lower snorkel section or mask it to protection it for initial insertion test for size. Once size had been confirmed Insert the Snorkel through the Cut-out, (Spray WD40 or similar lubricant if needed to assist in inserting the snorkel into the cut-out.)

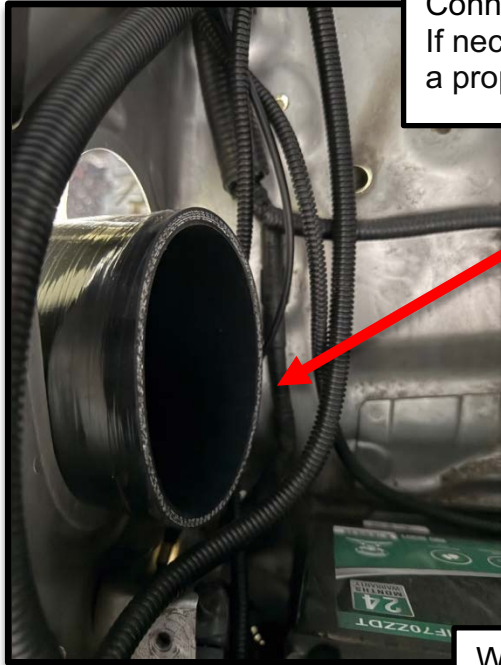






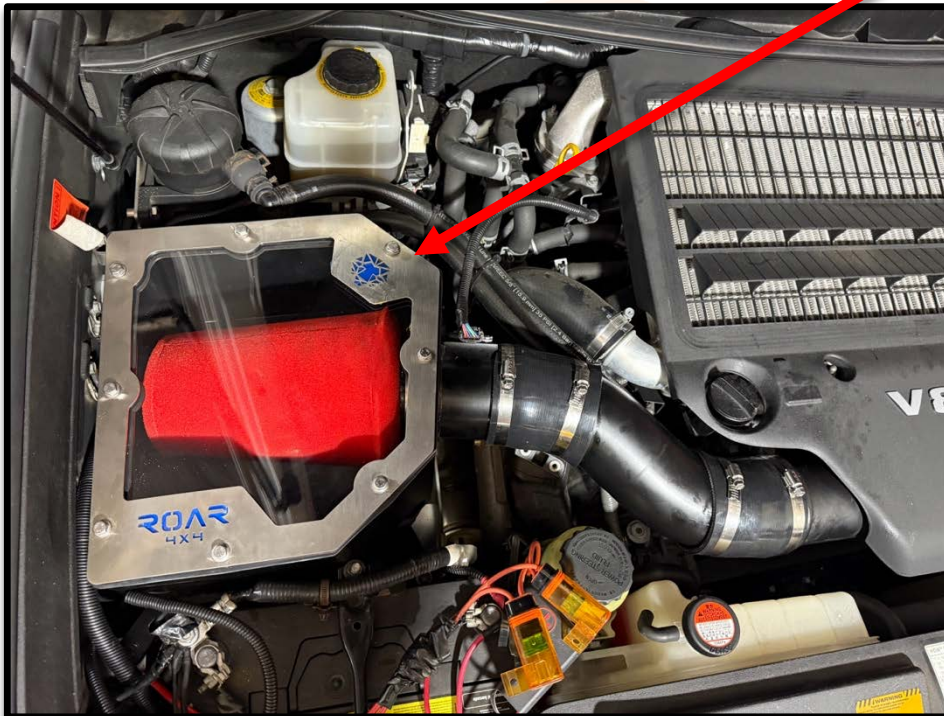
Connect as per Diagram above and components list





Connect Directly to Factory airbox or after-market Airbox -  
If necessary, modify the airbox or use an adapter to ensure  
a proper fit with the snorkel hose.

We highly recommend an after-market airbox like the Roar  
Performance Aluminium airbox to maximise your  
experience and performance







Note: Once the snorkel is positioned correctly through the quarter panel and seated into the airbox, align the snorkel's mounting bracket with the driver-side upright support. Mark the three mounting points, then drill the holes. Apply a bead of silicone sealant around the contact area and secure the snorkel by riveting it into place. Depending on the vehicle model, spacers may not be required — in these cases, a silicone bead alone is sufficient.



#### Reinstall Removed Parts:

- Reattach the inner fender (Quarter Panel) liner.
- Reinstall the front left wheel.
- Reconnect the air filter box and any other components removed during preparation.
- Check all bolts and connections for tightness.

#### Final Checks:

- Reconnect the negative battery terminal.
- Start the engine and check for any air leaks around the snorkel connections. If any are found, apply additional silicone sealant as needed.
- Ensure the snorkel is securely mounted and does not interfere with the vehicle's operation.



**Clean-up:**

- Remove any masking tape from the vehicle.
- Clean up the work area and dispose of any debris or old parts properly. Note: Many older parts can be recycled.

By following these detailed steps, you should be able to successfully install a stainless-steel snorkel on a Toyota Landcruiser 200 Series. If you encounter any difficulties, please seek professional assistance.

**Performance Combo Kits:**

For the ultimate off-road performance, we recommend pairing the snorkel with our Roar4x4 Airbox, Performance Throttle Controller, and Diff Breather Kit. This combination enhances vehicle performance and provides peace of mind, particularly during water crossings. You can purchase these products from your local Roar4x4 reseller or online at [www.roar4x4.com](http://www.roar4x4.com).



## Acoustic Considerations & Sound Characteristics of Stainless-Steel Snorkels

One of the standout features of a stainless-steel snorkel—beyond its strength and corrosion resistance—is the distinct acoustic profile it provides. Unlike traditional plastic snorkels, stainless steel creates a more pronounced and raw induction sound. This is due to the resonance properties of metal, which amplifies and channels the airflow noise, producing a deep, throaty “grumble” that many 4WD enthusiasts find highly desirable. This sound is particularly noticeable under throttle, giving the vehicle a more aggressive and performance-oriented auditory signature.

The acoustic tone produced by the snorkel will vary depending on the engine type and the configuration of the intake system. For example, in twin-turbo diesel vehicles like the Toyota Landcruiser 200 series, the sound can significantly intensify once the second turbo engages. At that point, the airflow increases dramatically, and the resonance through both the airbox and stainless snorkel becomes more dynamic. The change in airflow characteristics between idle, partial throttle, and full boost conditions creates a fluctuating soundscape that adds a unique driving experience. This variation can be exhilarating, especially for drivers who enjoy a mechanical connection to their vehicle’s performance.

Furthermore, the presence of an aftermarket airbox can alter both the volume and tone of the induction noise. High-flow or larger-capacity airboxes typically allow for greater air volume and less sound dampening, which can enhance the acoustic response of the snorkel even more. It’s also important to note that vehicles without a snorkel or with factory intake systems are often designed to minimize intake noise for comfort, meaning the jump to a stainless snorkel can feel like an entirely new experience behind the wheel.

While sound is a subjective aspect, it remains a key reason why many enthusiasts opt for stainless steel snorkels. It not only complements the rugged look of the vehicle but also provides an audible representation of the engine working harder—particularly when pushing through water crossings, off-road climbs, or open highways.

### Returns Policy:

Products may only be returned if they are unused, uninstalled, unmarked, and in brand new condition, with all original packaging intact. Roar4x4 reserves the right to refuse a return if the product shows any signs of installation, attempted installation, cosmetic wear, or missing packaging. Once installation has been initiated or the snorkel shows evidence of fitment, it will be classified as used and cannot be accepted for return or refund under any circumstances. By proceeding with installation, the user acknowledges and accepts all risks associated with product fitment, post-installation performance, and the return policy conditions outlined above.

## Disclaimer

Roar4x4 strongly advises and encourages the owner of the vehicle to engage a qualified professional installer for the fitment of this snorkel. While installation may be attempted as a DIY project, it must be undertaken with caution and a high level of mechanical competence. Any damage, injury, or vehicle issues arising from improper installation, tool misuse, or deviation from the provided instructions are solely the responsibility of the installer or vehicle owner. Roar4x4 accepts no liability for damages caused by incorrect fitment or unapproved modifications during installation.

It is the responsibility of the installer to ensure that the snorkel is fitted in a way that does not compromise the structural integrity, weather resistance, or mechanical performance of the vehicle. Incorrect installation or the use of substandard tools may result in misalignment, air leaks, or reduced performance. The list of tools and materials provided is intended as a guideline only; equivalent or superior professional-grade equipment is recommended for best results.

Roar4x4 also disclaims any responsibility for changes to vehicle acoustics resulting from the installation of this stainless-steel snorkel. Due to the resonant nature of metal tubing, induction noise may be noticeably increased, particularly in vehicles with modified engines, aftermarket airboxes, or throttle controllers. These components, when combined, may amplify intake or turbo-related acoustics. This effect is particularly noticeable in twin-turbo engines under full load or high RPM. Roar4x4 will not be held liable for any noise-related complaints, compliance issues, or penalties that may arise from vehicle use, particularly under aggressive driving conditions.

Installation or use of optional components such as aftermarket airboxes or throttle controllers may further alter the performance and acoustics of the vehicle. These parts are sold separately and must be installed according to their own respective guidelines. Any resulting impact on vehicle emissions, warranty coverage, or roadworthiness remains the responsibility of the owner.