

Thank you for choosing the Roar Performance Throttle Controller. To maximize the performance of this product, please read the following instructions carefully before use.

1 The product and related accessories provided are for reference only. Please follow the standard installation and usage procedures.

One. PRODUCT PICTURE

THROTTLE CONTROLLER

PERFORMANCE MODULE

Two. FUNCTION AND SPECIFICATIONS

- Enhances car handling by adjusting the sensitivity of the throttle controller, making it better suited to various driving habits and road conditions.
- Includes the following modes:
 - F1 Comfortable Mode
 - F2 Sports Mode
 - F3 Racing Mode
 - Original Mode
 - EC Fuel-Saving Mode
- Utilizes light-sensitive auto-adjust technology to efficiently adjust the throttle controller's display brightness according to light intensity.
- Each level changes smoothly, providing a gradual acceleration experience without sudden jolts.
- To suit different gear shifting habits, the product offers both AT (Automatic Transmission) and MT (Manual Transmission) modes. Drivers can choose based on their preference.

Note: The default factory setting is F2.8 in MT mode.

Three. PRODUCT PICTURE

Automobile Accelerator Pedal Plug

PERFORMANCE MODULE

THROTTLE CONTROLLER

Installation Diagram

Accelerator Pedal

- Connect the Components:**
 - Attach the throttle controller to the accelerator pedal and the vehicle's accelerator pedal plug.
- Position the Controller:**
 - Secure the Roar Performance Throttle Controller on the central console for easy access.
- Finalize the Connection**
 - Connect the white plug to both the throttle controller and the accelerator pedal plug. Use cable ties if necessary to keep the wires organized.

Picture1

Picture2

Installation Procedure:

The Roar Performance Throttle Controller should be installed between the vehicle's accelerator pedal and the vehicle's accelerator pedal plug.

- Turn Off the Vehicle:**
 - Ensure the vehicle is turned off and the key is removed from the ignition.
- Installation Steps:**
 - Connect the Roar Performance Throttle Controller to the accelerator pedal plug and the accelerator pedal.

Notes: Installation may vary slightly depending on the vehicle model.

Picture3

Picture4

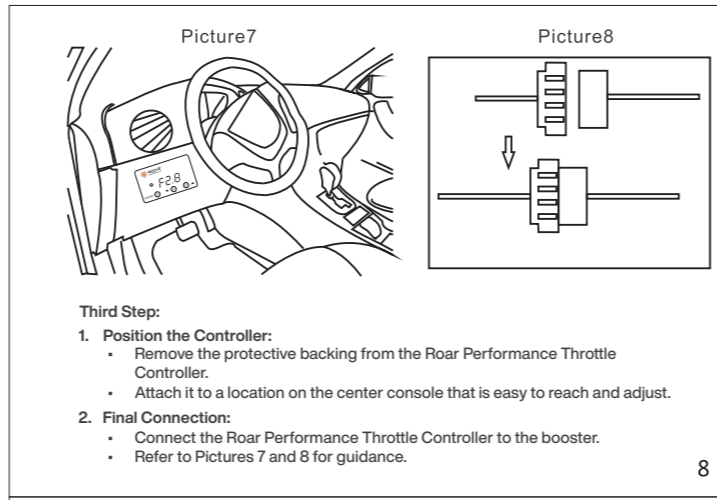
First Step:
Disconnect the accelerator pedal plug. Make sure to remember the orientation of the plug for reassembly. Refer to Pictures 3 and 4 for guidance.

Picture5

Picture6

Second Step:
Connect the Roar Performance Throttle Controller to the accelerator pedal. Refer to Pictures 5 and 6 for guidance.

This version is concise and user-friendly, ensuring easy understanding of the installation step.



Step Four. SAFETY CAUTIONS

- Preparation:**
 - Before installation, ensure you are familiar with all plugs and their directions. Make sure all connections are secure.
- Post-Installation Check:**
 - After installation, start the engine in Neutral (N) or Park (P) gear to ensure the accelerator pedal functions correctly.
- Incorrect Installation:**
 - If installed incorrectly, the accelerator may not work, and the engine warning light might turn on.
 - Don't worry, the product includes an internal protection circuit to prevent damage.
 - If this occurs, turn off the engine, disconnect the system, and wait for at least two minutes for the protection circuit to reset.
 - Then, reinstall the system correctly and restart the engine. If the engine warning light remains on, consult with an agent to clear the fault.

Third Step:

- Position the Controller:**
 - Remove the protective backing from the Roar Performance Throttle Controller.
 - Attach it to a location on the center console that is easy to reach and adjust.
- Final Connection:**
 - Connect the Roar Performance Throttle Controller to the booster.
 - Refer to Pictures 7 and 8 for guidance.

Step Five. OPERATION

- Controller Buttons:**
 - The system is operated using three buttons on the controller: Mode, Increase (+), and Decrease (-).
- Adjusting Settings:**
 - You can adjust the settings after powering on the system. Ensure you do this safely while driving.
- Selecting Modes:**
 - Press the Mode button to cycle through the available modes:
 - F1 Comfort Mode
 - F2 Sport Mode
 - F3 Racing Mode
 - Original Mode
 - EC Fuel-Saving Mode
- Adjusting Levels:**
 - Use the Increase (+) and Decrease (-) buttons to adjust the levels within each mode (1 to 9). Original Mode does not have adjustable levels.

Mode Descriptions

F1 Comfort Mode

- Increases the throttle response rate for smoother acceleration.
- Adjustable from level 1 to 9.

F2 Sport Mode

- Enhances instant acceleration and improves cornering abilities for the best acceleration performance.
- Adjustable from level 1 to 9.

Mode Descriptions

F3 Racing Mode

- Provides superior acceleration, giving a racing-field experience.
- Adjustable from level 1 to 9.

Auto Mode (AAA)

- To enter Auto Mode, press the Mode button, then press and hold the "▲" button for 3 seconds. The display will show "AAA" indicating AutoStick (AT) mode.

Mode Descriptions

Manual Mode (HHH)

- enter Manual Mode, press the Mode button, then press and hold the "▼" button for 3 seconds. The display will show "HHH" indicating Manual (MT) mode.

Light Sensor Auto-Adjustment

- The display brightness will automatically adjust based on the surrounding light conditions.

Mode Descriptions

Normal Mode (Nor)

- Restores the throttle to the vehicle's default settings.

EC Fuel-Saving Mode

- Optimizes fuel efficiency, achieving up to 6% fuel savings.

Mode Descriptions

Auto Mode (AU)

- Automatically adjusts acceleration based on your driving habits for optimal performance.

One-Key Overtake Function

- Press and hold the (M) button to instantly switch to Racing Mode for quick overtaking or intense driving. Pressing the (M) button continuously will cycle through the driving modes.

Mode Descriptions

Learning Function

- This function is generally not needed. It is only used if there is a mismatch between the power controller and the car data, resulting in poor acceleration or high idle speed.

Anti-Theft Function

- After activating the anti-theft function, the car's throttle will be locked, preventing acceleration at idle speed.

Learning Function

The product is pre-matched with the corresponding vehicle model at the time of delivery. However, some individual vehicle parameters may require additional adjustment. To ensure the best performance, the learning function allows the power controller to automatically match your car's data. This function is generally not needed but can be used if there are issues with poor acceleration or high idle speed.

Operation:

- Turn on the car's power but do not start the engine.
- Press and hold the "4" button for 5 seconds. The controller screen will display a 15-second countdown.
- During the countdown, fully press the accelerator pedal (only the first stage) and hold it for 1 second.
- Release the pedal and wait for the countdown to finish.
 - If "00" is displayed, the learning process is successful.
 - If "11" is displayed, the learning process has failed. Repeat the steps if necessary.

One-Key Overtake Function

- Press and hold the (M) button for 3 seconds to switch directly to Racing Mode for quick overtaking or intense driving. If the (M) button is pressed continuously, the driving modes will cycle.

Anti-Theft Function

- When the anti-theft function is activated, the car throttle will be locked, preventing acceleration at idle speed.

To Enter Anti-Theft State:

- Press and hold the M + 4 buttons for 3 seconds. The screen will display "000".
- Use the M, 4, and + buttons to enter a 3-digit password. (Remember this password as it is required to exit the anti-theft state).
- After entering the password, press and hold the M + 4 buttons for 3 seconds. The screen will display "LOC", indicating the anti-theft state is active.

To Exit Anti-Theft State:

- Use the M, 4, and + buttons to enter the same 3-digit password.
- Press and hold the M + 4 buttons for 3 seconds. The screen will show the normal acceleration mode, indicating the anti-theft state has been exited.

18