

ROCKARMOR

Fitting Instructions

Description:	Toyota Prado 120 Rock Sliders/Side Steps
Model:	Toyota Prado 120
SKU:	SSSRA-FJ120



Important Notice – Please Read Before Installation

Before commencing the installation, please ensure you have **carefully read and understood all instructions**. Rockarmor products are engineered to the highest standards using premium materials and finishes. This includes **sandblasting all raw materials, e-coating to eliminate impurities**, and applying a **Tiger powder coat** for enhanced durability.

Should the product become scratched or damaged during off-road or on-road use, the affected surface must be **repaired promptly** to maintain corrosion resistance and product longevity.

Installation must be carried out by a qualified technician, and all steps must be followed precisely to ensure a secure and proper fit.

Side Impact Airbag Compatibility

If your vehicle is equipped with **side impact airbags**, the Rockarmor side steps have **airbag-compatible brackets** integrated into the design. These brackets allow the side steps to remain compliant with airbag deployment safety standards while still offering robust protection and functionality.

While Rockarmor side steps are engineered to be durable and suitable for off-road use, **we strongly advise against using them as a high-lift jack point**. Applying a high lifting force may compromise the structural integrity of the **airbag support brackets**, and could impact airbag performance in the event of a collision.

Note: Please Read Before Attempting Installation

- This product and its fixings **must not be modified** unless explicitly stated in these instructions.
- **Do not remove** any product labels or compliance markings.
- This product is intended solely for use on the **specified vehicle model** outlined in this guide.
- The installer must ensure adequate **clearance between the chassis and body**, and proper fitment to all mounting points.
- **Loctite must be applied** to all bolts and nuts during installation.
- Specialized tools may be required, and we strongly recommend installation be carried out by an **experienced 4x4 accessory fitter**.

Liability Waiver

By proceeding with the installation, the installer acknowledges responsibility for adhering to these instructions.

Rockarmor Pty Ltd accepts no liability for any damage, injury, or vehicle malfunction arising from:

Fitting Instructions

- Improper installation
- Use of this product in a way not intended or advised
- Failure to follow the provided fitting guide

Any deviation from the instructions or product modification will **void all warranties** and transfer all associated risks and liabilities to the installer and/or vehicle owner.

Occupational Health and Safety (OHS) Guidelines for the Workshop

Hearing Protection

All personnel must wear appropriate hearing protection in high-noise areas or when operating loud machinery to prevent hearing damage.



Eye Protection

Approved safety glasses or goggles must be worn at all times to shield the eyes from debris, chemicals, and other hazardous materials.



Safe Manual Handling Procedures

Use correct lifting techniques to avoid strains and injuries. Where possible, utilize mechanical aids and never exceed personal lifting capacity.



Hazard Awareness and Prevention

Remain vigilant of potential hazards within the workshop. Adhere to all posted warning signs and follow established safety protocols to mitigate risks.



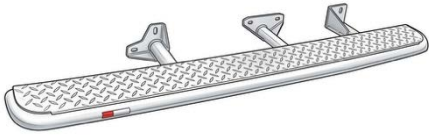

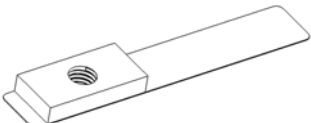
Please Note:

- 1) These Side Steps/ Rock Sliders cannot be installed onto other vehicles, in addition to the manufacturer special instructions
- 2) Do not remove labels on the Products.
- 3) Do not change the structure of Side Steps/ Rock Sliders.

Standard locking torque

M6 - 11Nm | M8 - 18Nm | M10 - 80 Nm | M12 - 90 Nm | M16 - 90 Nm

Items List

Item	Description	Qty	Item	Description	Qty
		1			1
	Side Step (LH)			Side Step (RH)	
					6
				T-Nut M10	

Item	Description	Qty
	Hexagonal head bolt M10x40	6
	T-Nut M10	6
	Larger Washer	10
	Spring Washer D10	10

Toyota Prado 120 Series Side Steps



Required Tools

- 16mm socket + ratchet
 - 16mm spanner (ring/open end)
 - Extension + universal joint (recommended)
 - Torque wrench (recommended)
 - Long nose pliers (optional)
 - Cable ties / tape (optional for holding plates)
 - Loctite (optional)
-



Important Pre-Installation Notes

- Do NOT fully tighten bolts until final alignment
- Ensure all mounting points are loosely fitted first
- Always use supplied washers (flat + spring)
- Ensure even gap along sill before tightening
- Assistance recommended when lifting steps
- Check manual vs automatic mounting point selection

Preparation & Product Inspection

Remove Factory Steps



- Remove existing side steps from vehicle
- Expose all chassis mounting points
- Clean mounting areas if required



Inspect Rock Sliders



- Checker plate anti-slip surface
- Folded edge (protects sill from debris)
- Rubber isolation strip (reduces vibration)
- Dual rail structure (impact protection)
- Modular front section (brush bar compatibility)

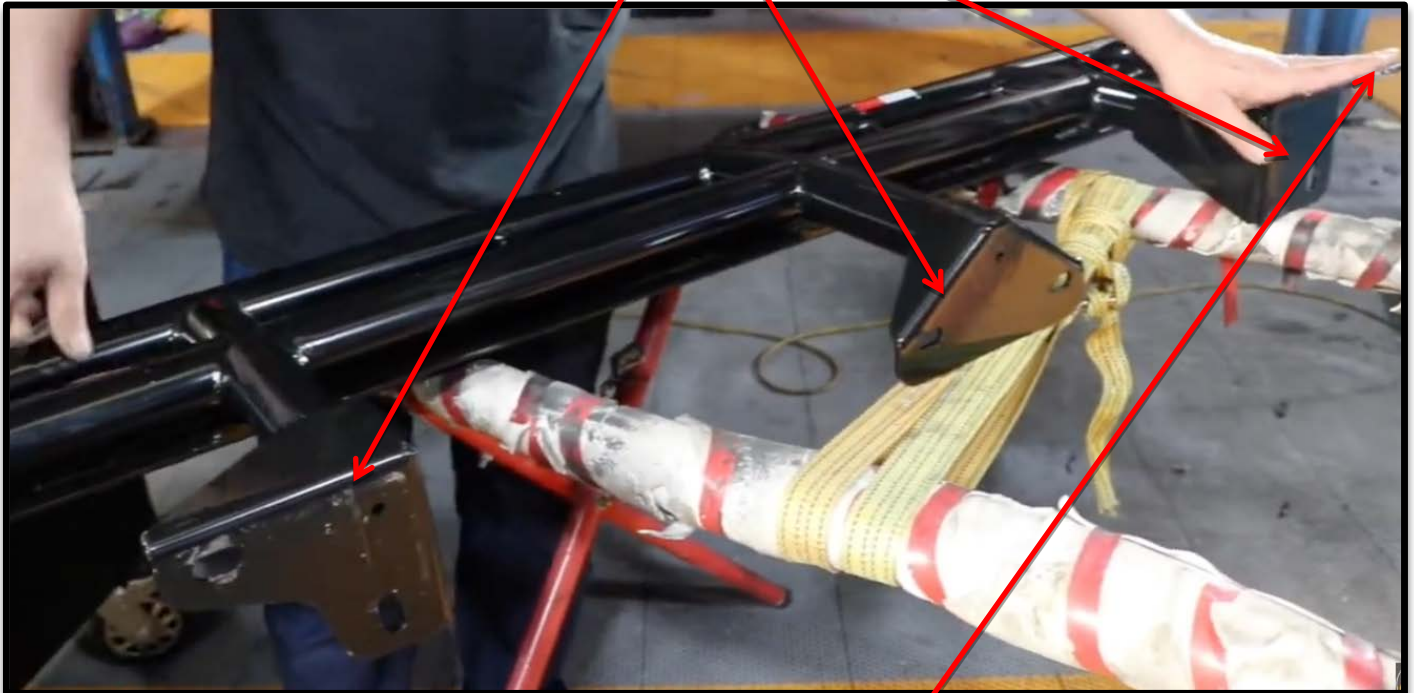


Mounting System Overview

Identify Mounting Points

Each side has **3 mounting points**:

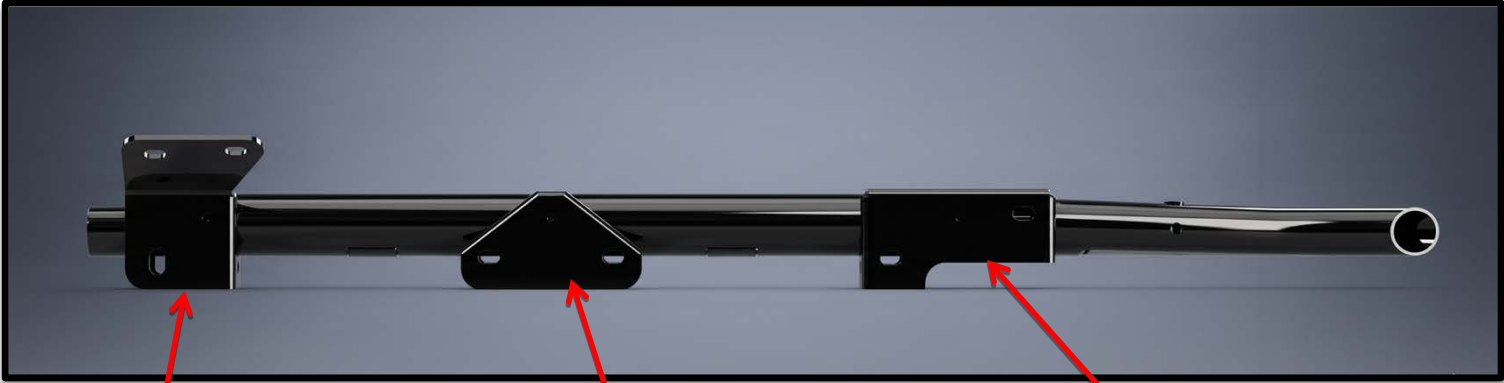
1. Front mount (2 options – manual vs auto)
2. Centre mount (U-bolt system)
3. Rear mount (U-bolt system)



Select Correct Front Mount

- Use **ONLY** one front mounting hole:
 - Depends on **manual or automatic Prado**
- Ensure correct alignment before proceeding

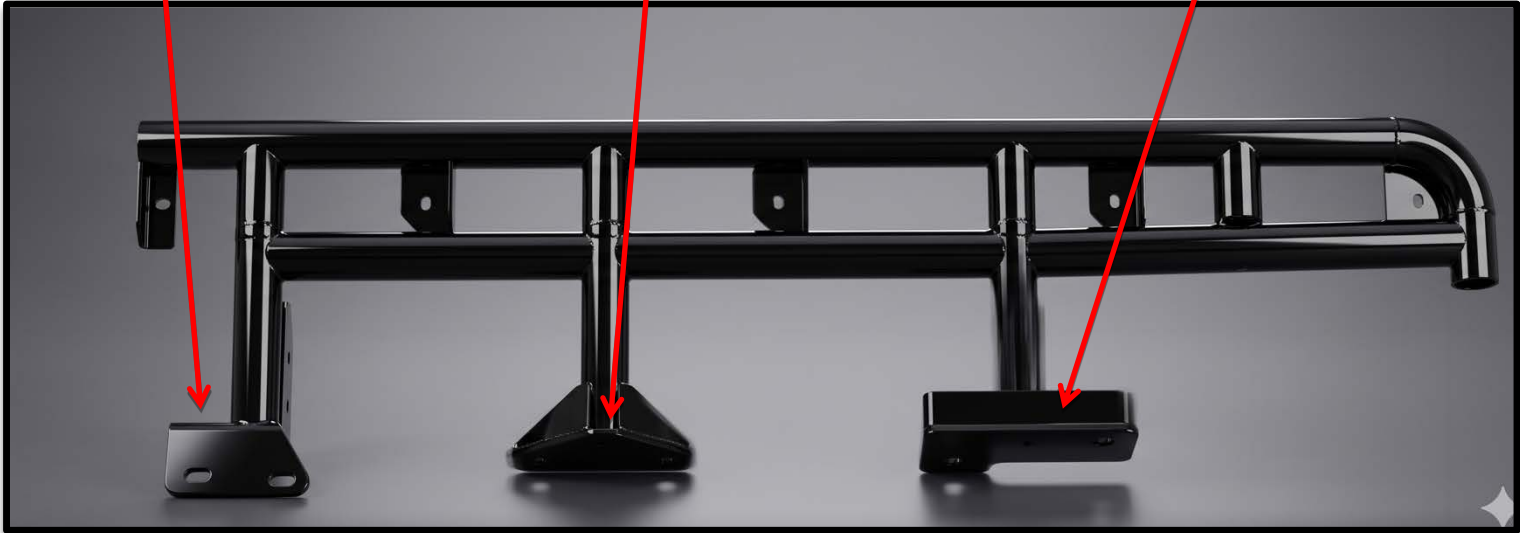
Mounting System Overview



Front Mount

Centre Mount

Rear Mount



Front Mount Preparation



Prepare & Insert Side Nut Plate

Locate in kit:

- 4 x tab plates (welded nut plates)

These will:

- Insert into chassis
- Provide internal threaded mounting points
- Insert second plate into side of chassis
- Align with corresponding mounting hole



Centre Mount Installation



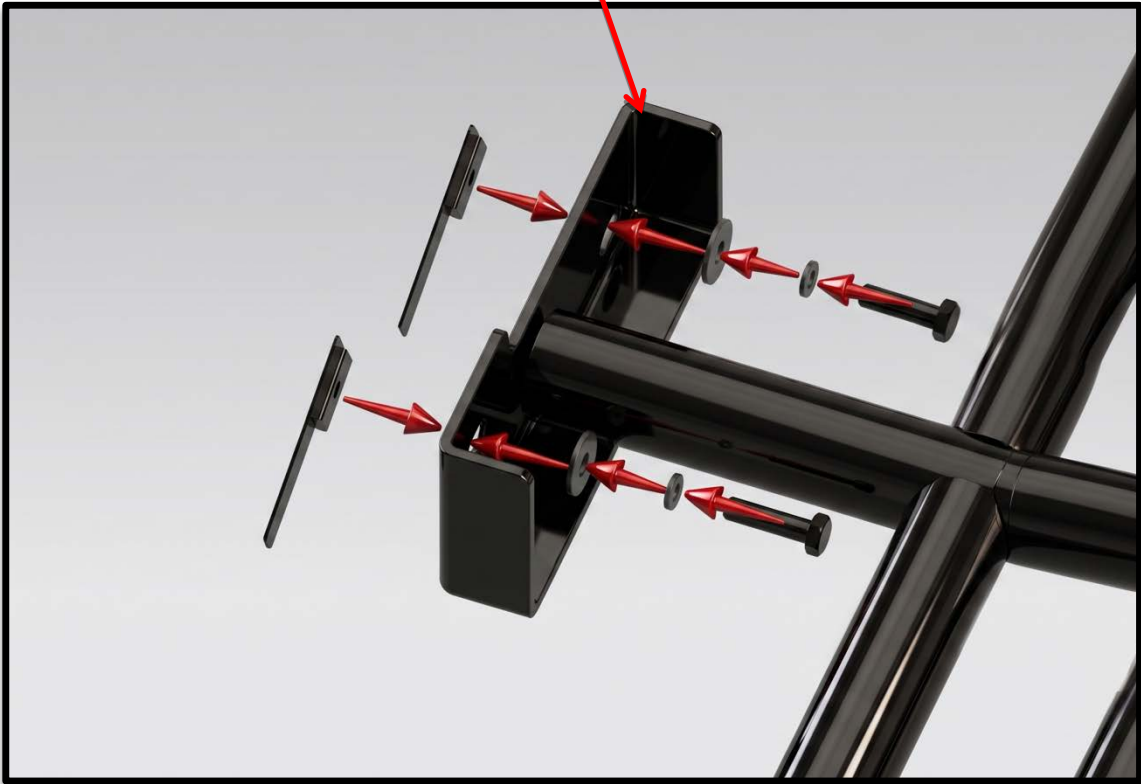
Prepare & Insert Centre Nut Plate

Install Centre Bolts

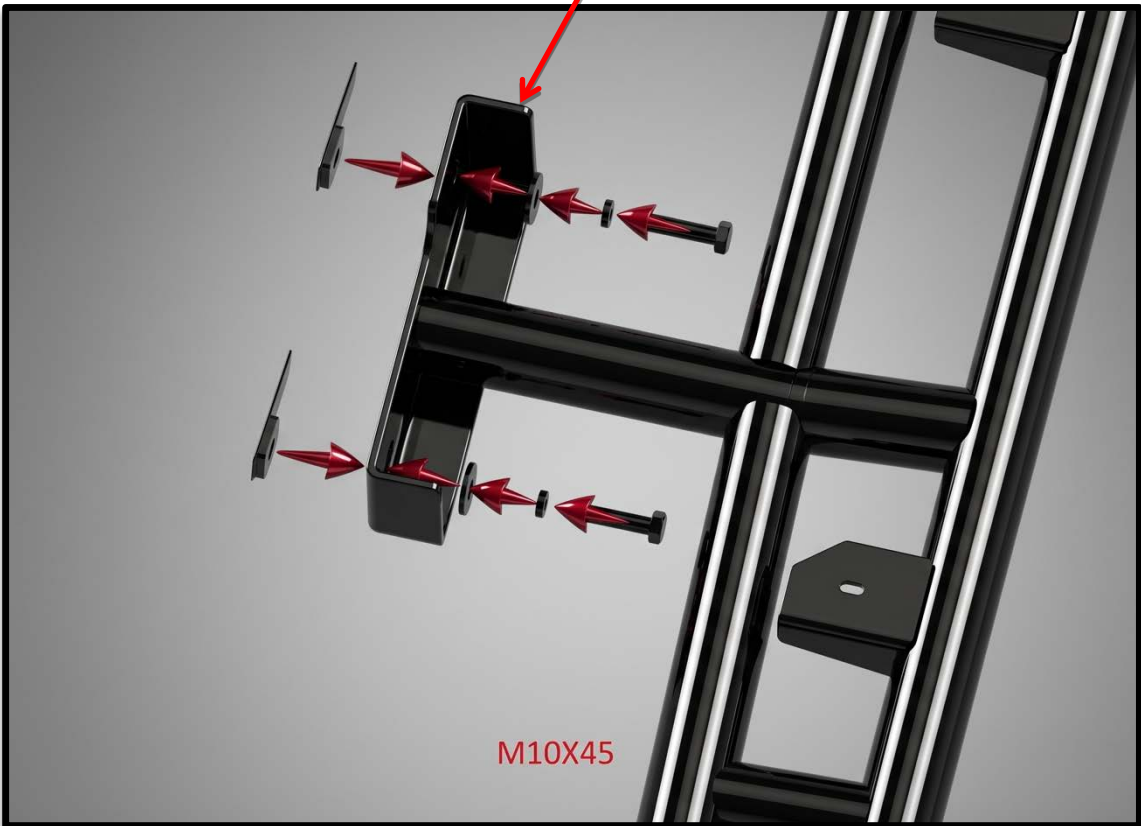
- Insert bolt through mounting bracket
- Thread into installed nut plate Install:
 - Flat washer
 - Spring washer
 - Nut



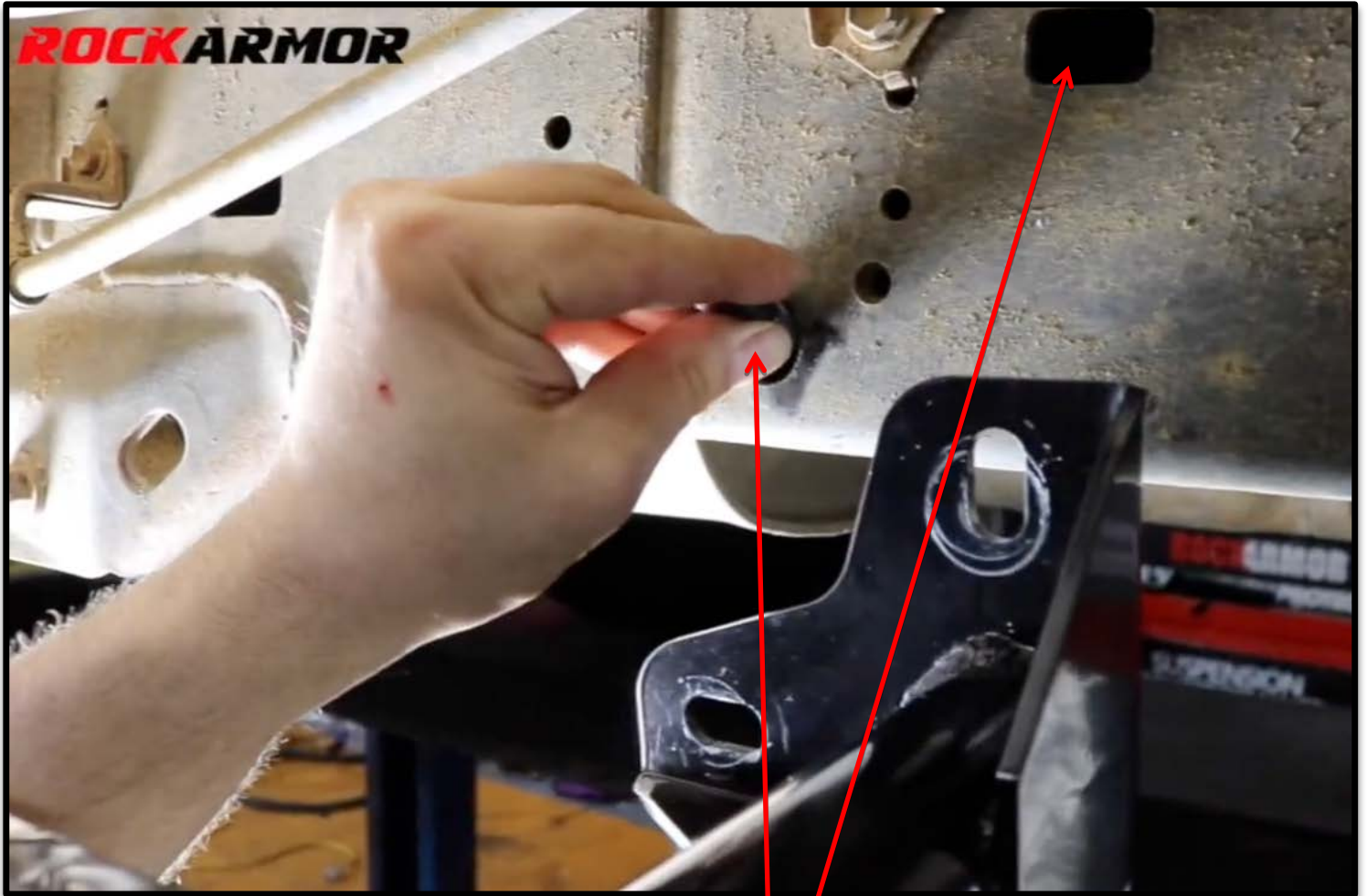
Rear Mount LHS



Rear Mount RHS



Rear Mount Installation



Prepare & Insert Rear Nut Plate

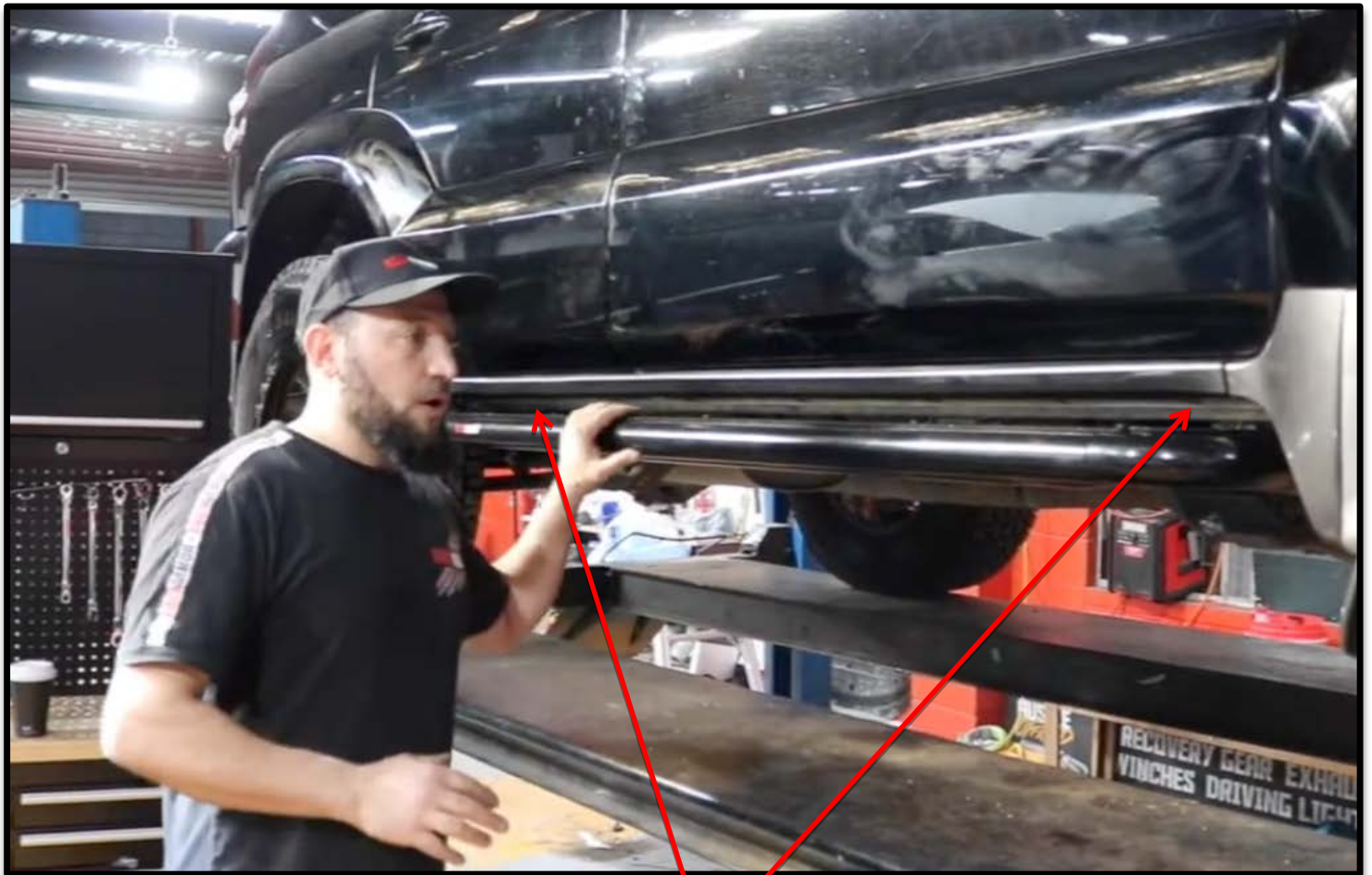
Install Rear Bolts

- Insert bolt through mounting bracket
- Thread into installed nut plate Install:
 - Flat washer
 - Spring washer
 - Nut

Alignment

Adjust Mounting Points

- Adjust front and rear height as needed
- Ensure consistent positioning



Check Step Position

Ensure:

- Even gap along sill
- Step is parallel with vehicle
- No contact with body

Final Tightening



Tighten All Mounting Points

Tightening order:

- Front mount
- Centre mount
- Rear mount

Tools:

- 16mm spanner
- 16mm socket (with extension if needed)



Final Assembly and Testing

- Description: Tighten all bolts to the specified torque values. Inspect the installation for stability and ensure all components are securely fastened. Test fit the guard to confirm there are no vibrations or misalignments. Inspect/Test and retighten bolts on a regular basis
- Safety Note: Do not operate the vehicle without completing the final inspection.

Disclaimer

Rockarmor Pty Ltd takes no responsibility for any damages, injuries, or vehicle malfunctions resulting from improper installation or failure to follow the provided fitting instructions.

We strongly recommend that the installation of this product be carried out by a qualified and experienced fitter with the appropriate tools and knowledge to ensure safety and proper functionality.

Any modifications to the product or deviations from the instructed procedure will void all warranties and transfer full responsibility to the installer and/or vehicle owner.

By proceeding with the installation, the installer acknowledges and accepts all risks and liabilities associated with the fitting process.