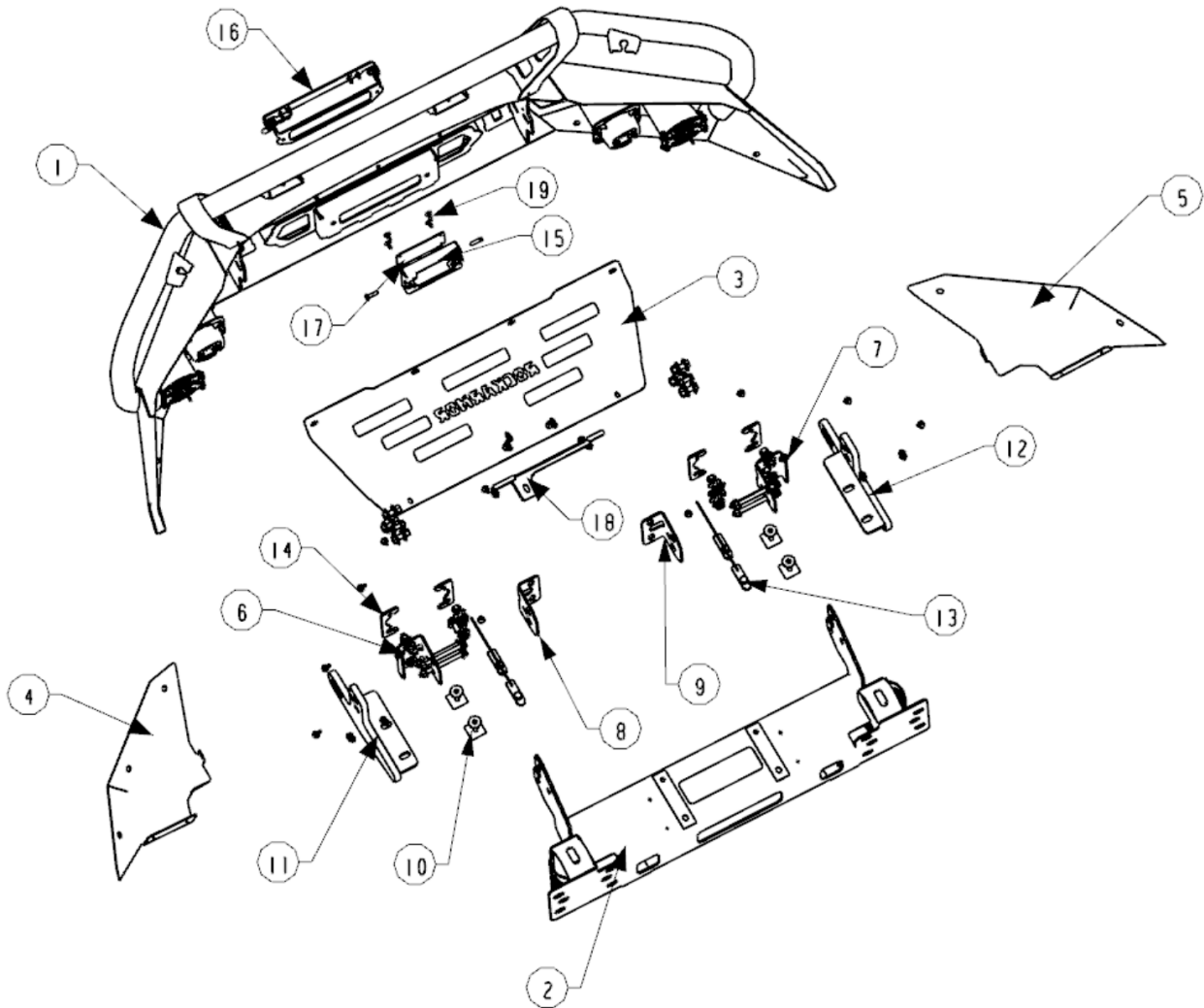


# ROCKARMOR Fitting instruction

Description:	GT Bull Bar For 2020+ NAVARA   RETRO FIT 2015-2020 MODELS
Model:	2020+ NAVARA
Item NO.:	BBRA-NP300GT



**Note:**

- 1) This bull bar cannot be installed onto other vehicles , in addition to the manufacturer special instructions
- 2) Do not remove ADR label from the bar.
- 3) Do not alter or change the structure of bull bar.

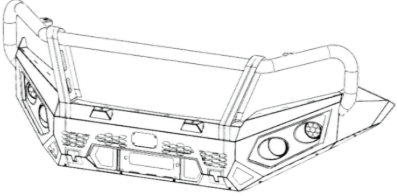
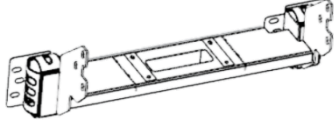
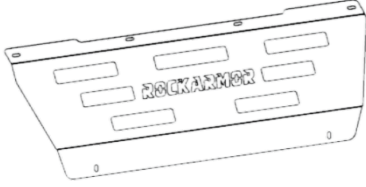
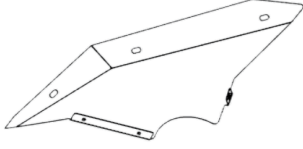
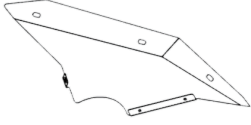
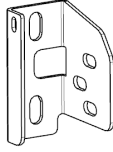
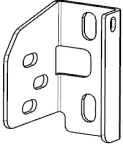
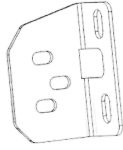
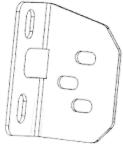
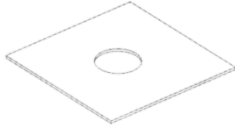
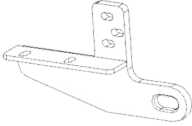
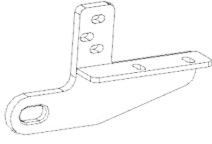
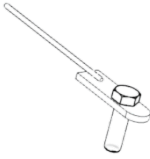
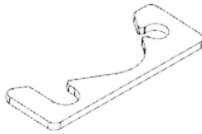
**Standard locking torque**

M6 - 11Nm | M8 - 18Nm | M10 - 80 Nm | M12 - 90 Nm | M16 - 90 Nm

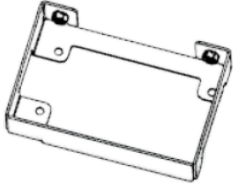
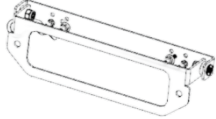



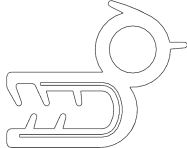
**Bom list**

Item	Description	Qty	Item	Description	Qty
------	-------------	-----	------	-------------	-----

# ROCKARMOR Fitting instruction

1		1	2		1
	Bull bar assemble			Winch Frame	
3		1	4		1
	Middle bash plate			Bash plate(LH)	
5		1	6		1
	Bash plate(RH)			Bracket (LH)	
7		1	8		1
	Bracket (RH)			Bracket(LH)	
9		1	10		4
	Bracket (RH)			M2 PVC	
11		1	12		1
	Recovery points(LH)			Recovery points(RH)	
13		4	14		4
	Locator Bolt M12*20			SPACER	

# ROCKARMOR Fitting instruction

15	 ACC BRACKET	1	16	 Licence Plate Holder	1
17	 BLACK PLASTIC PLATE SENSOR	1	18	 MIDDLE BRACKET	1
19	 Plastic plug	4	N/A	 Pinch mould (500mm)	1

Item	Description	Qty
20	Hexagonal head bolt M12x1.25X30	4
21	Hexagonal head bolt M12x35	6
22	Hexagonal head bolt M12X1.25x40	8
23	Hexagonal head bolt M6x20	25
24	Hexagonal head bolt M10x120	6
25	Hexagonal head bolt M10x1.25x30	2
26	Hexagonal head Nut M12x1.75	10
27	Hexagonal head Nut M12x1.25	8
28	Hexagonal head Nut M6	11
29	Hexagonal head Nut M10X1.5	6
30	Flange Nut M10X1.25	2
31	D10x24_2 Washer	12
32	D12x32_3 Washer	36
33	D6x24_2 Washer	30
34	D6x12_2 Washer	6
35	D10x20_2 Washer	2
36	Spring Washer D10	6
37	Spring Washer D12	22
38	Spring Washer D6	25

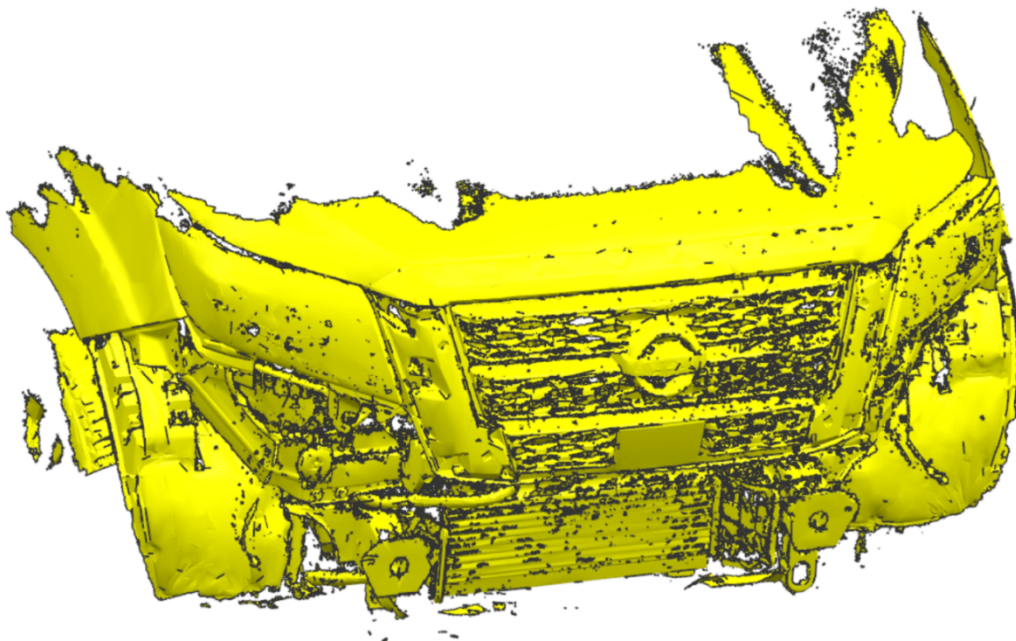
# **ROCKARMOR** Fitting instruction

---

## 1. Installation Steps:

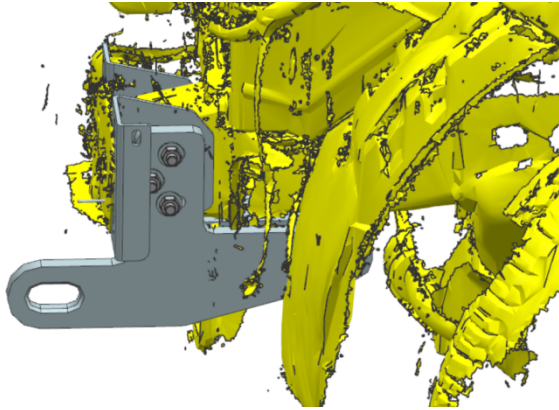
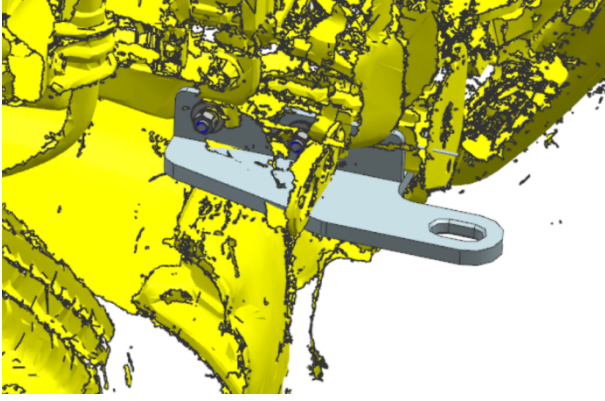


Remove front BUMPER surround

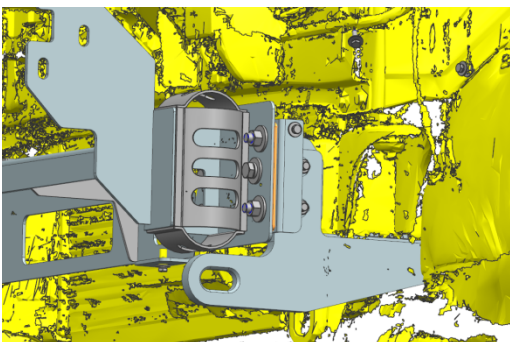
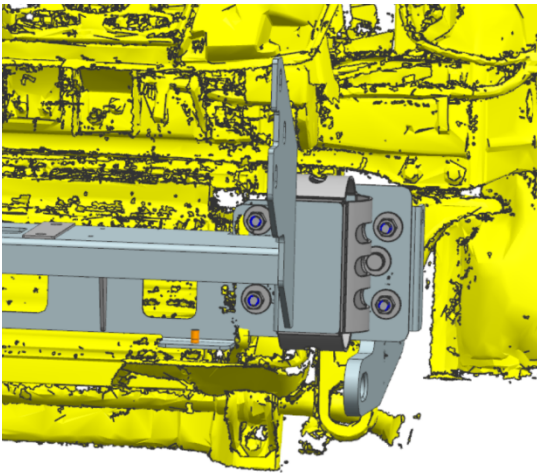


# ROCKARMOR Fitting instruction

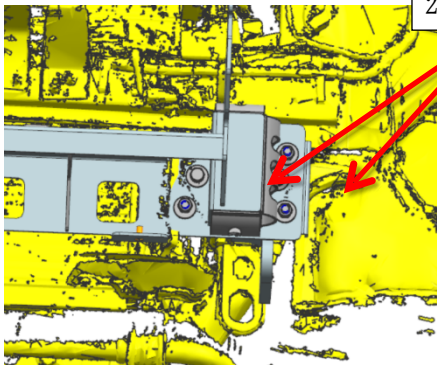
## 2. Chassis Mount: item 7&8&9&10&11&12(LHS)



## 3. install item 2&14



# ROCKARMOR Fitting instruction

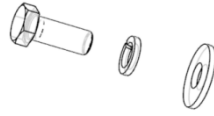


20/32/37

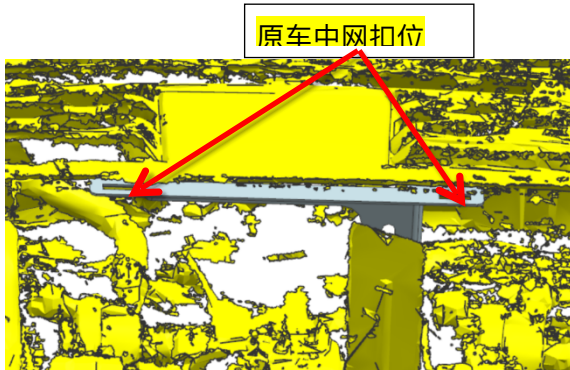
1. Use below bolt kits

Item 20/32/37 (4)

Hexagonal head bolt M12x1.25X30 + D12x32\_3 Washer + Spring Washer D12



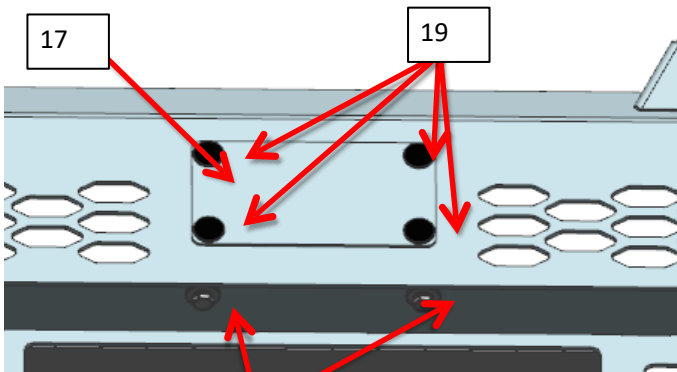
## 1. Install item 18



原车中网扣位

Use the Factory clips to reconnect the Grille

## 2. In



17

19

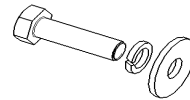
23/33/38

23/28/34/38

1. Use below bolt kits:

Item 23/33/38 (2)

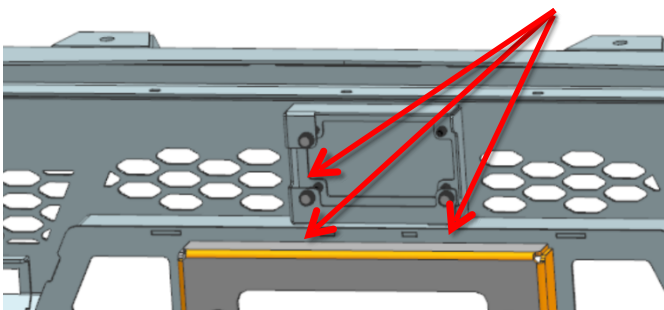
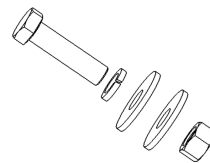
Hexagonal head bolt M6x20 + D6x24\_2 Washer + Spring Washer D6



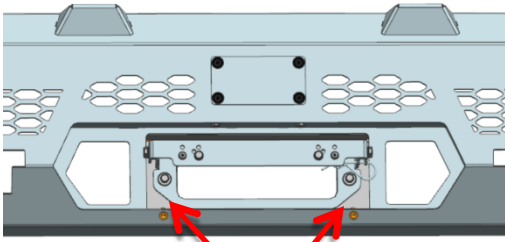
2. Use below bolt kits: fix the original radar to the bull bar

Item 23/28/34/38 (3)

Hexagonal head bolt M6x20 + Hexagonal head Nut M6 + D6x12\_2 Washer + Spring Washer D6



# ROCKARMOR Fitting instruction

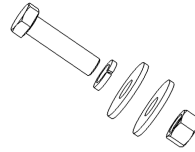


23/28/33/38

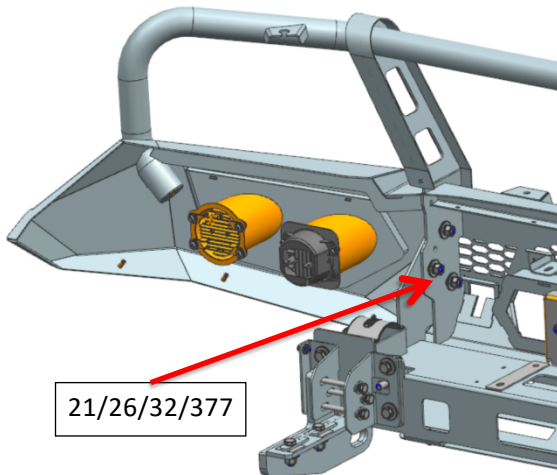
1. Use below bolt kits:

Item 23/28/33/38 (2)

Hexagonal head bolt M6x20 + Hexagonal head Nut M6 + D6x24\_2 Washer + Spring Washer D6



### 3. Install item 1

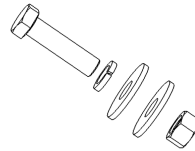


21/26/32/377

1. Use below bolt kits:

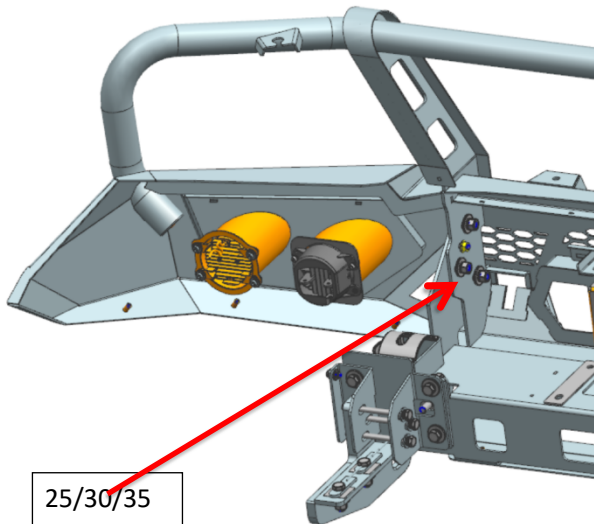
Item 21//26/32/37: (6)

Hexagonal head bolt M12x35 + Hexagonal head Nut M12x1.75 + D12x32\_3 Washer + Spring Washer D12

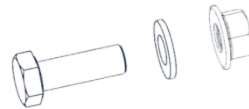


2. Use below bolt kits: (2)

After adjusting the installation gap, use an electric drill to punch the hole. After punching, use this set of bolts to fix it. Hexagonal head bolt M10x1.25x30 + Flange Nut M10x1.25 + D10x20\_2 Washer



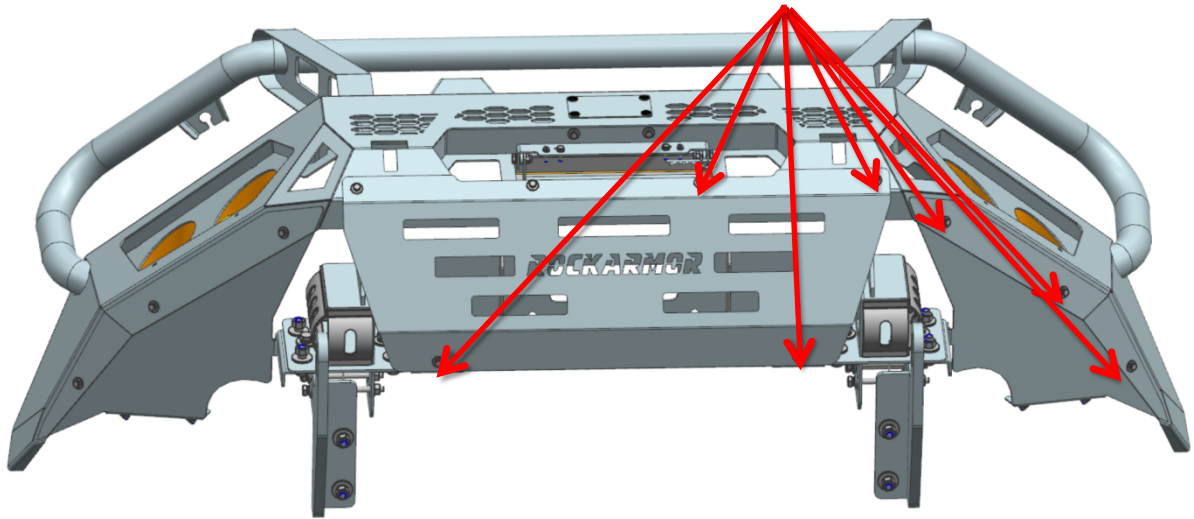
25/30/35



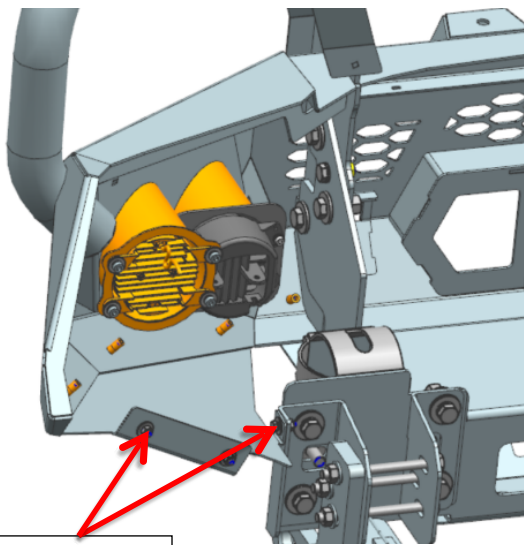
### 4. Install item 3&4&5

23/33/38

# ROCKARMOR Fitting instruction



7

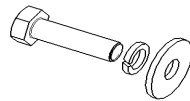


23/28/33/38

1. Use below bolt kits:

Item 23/33/38: (12)

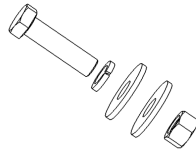
Hexagonal head bolt M6x20 + D6x24\_2 Washer + Spring Washer D6



2. Use below bolt kits:

Item 17/21/29/33: (6)

Hexagonal head bolt M6x20 + Hexagonal head Nut M6X1 + D6x24\_2 Washer + Spring Washer D6



5. Test and make sure that the guard is steadily fixed, fully tighten all hardware

6. Installation is finished, pick up all tools.