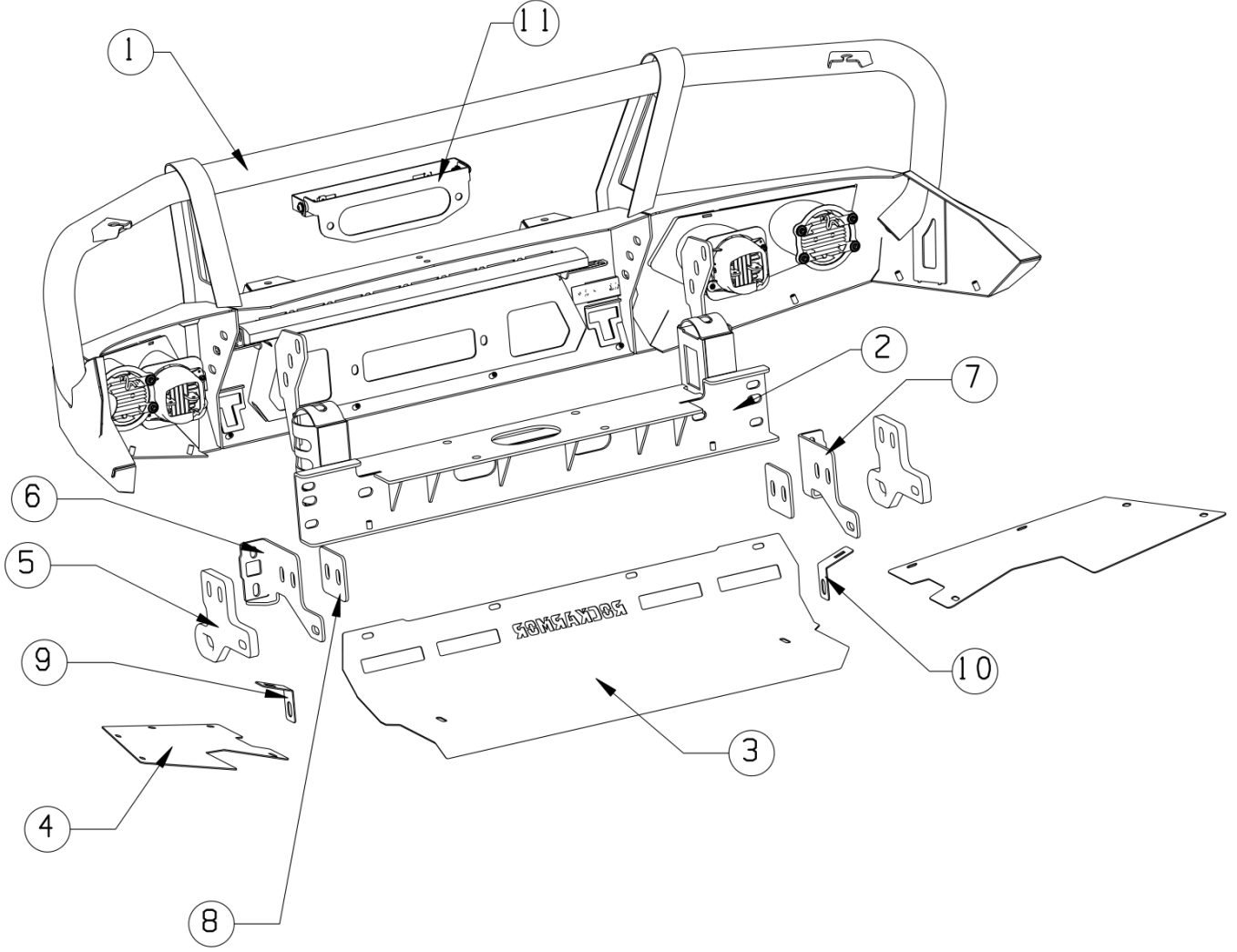


ROCKARMOR Fitting instruction

Description:	GT Bull Bar TO SUIT 2005-2011&2012-2015 TOYOTA HILUX
Model:	2005-2011 &2012-2015 TOYOTA HILUX N70
Item NO.:	BBRA-N70GT05+ / BBRA-N70GT



ROCKARMOR Fitting instruction



ROCKARMOR Fitting instruction

Note: PLEASE READ BEFORE ATTEMPTING INSTALLATION.

- All Rockarmor products are manufactured to highest of standards and latest finishes including sand blasting all raw material and e coating to clear the product of any impurities and finished with a tiger coat to keep the longevity if at any stage while off road or on road use this product is damaged or scratched have the damaged surface repaired.
- This product and its fixings must not be modified in any way unless stated in this fitting instruction.
- Do not remove labels from this product.
- Do not use this product for any vehicle other than specified in these instructions.
- It is the installer's responsibility to assure this product is installed correctly allowing enough tolerance for movement between the chassis and body and clearance of all components.
- Use Loctite on all nuts and bolts.
- The installation of this product may require the use of specialized tools and or trained fitter.

For more information regarding this product please visit www.Rockarmor.com.au

The following tools will be required to install the product.

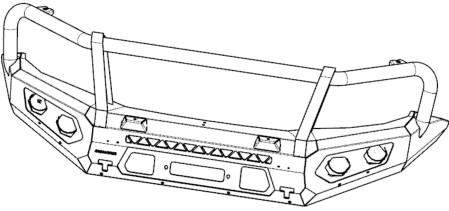
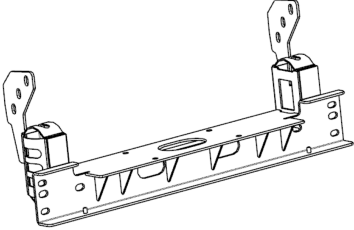
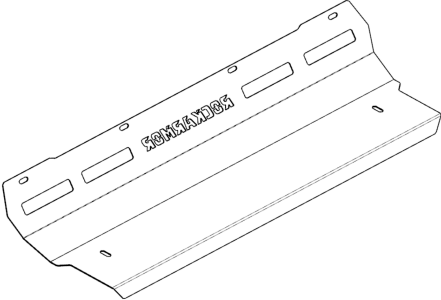
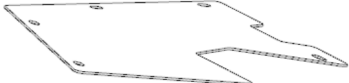
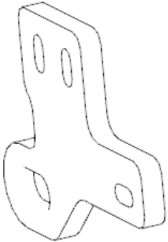
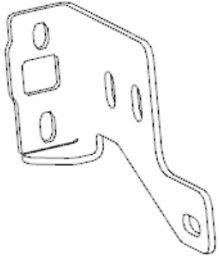


Metric Socket Set 10-18MM.
Socket Extension Bar
Metric Spanner Set 10-18MM.
Torx Drivers T25-T30
Trim Removal Tool
Screwdriver Set (Flat and Phillips head)
Utility Knife
Side Cutters
Pliers
Impact Drill
Loctite
Cable Ties
Masking Tape
Satin Black Automotive Paint
Grease and wax Remover.
Scotch Brite or Fine sandpaper.

Standard locking torque


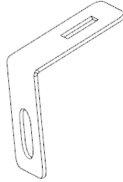
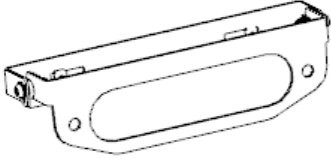
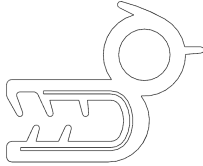
M6 - 11Nm | M8 - 18Nm | M10 - 80 Nm | M12 - 90 Nm | M16 - 90 Nm

ROCKARMOR Fitting instruction

BILL OF MATERIAL list

Item	Description	Qty	Item	Description	Qty
1	 Bull bar assemble	1	2	 Winch Frame	1
3	 Middle bash plate	1	4	 Bash plate	2
5	 Recovery points	1	6	 Outside Bracket(LH)	1
7	 Outside Bracket(RH)	1	8	 Recovery points Holder	2

ROCKARMOR Fitting instruction

9	 Bash Plate Holder(LH)	1	10	 Bash Plate Holder(RH)	1
11	 License Plate Holder	1	12	 Pinch mold (2400mm)	1

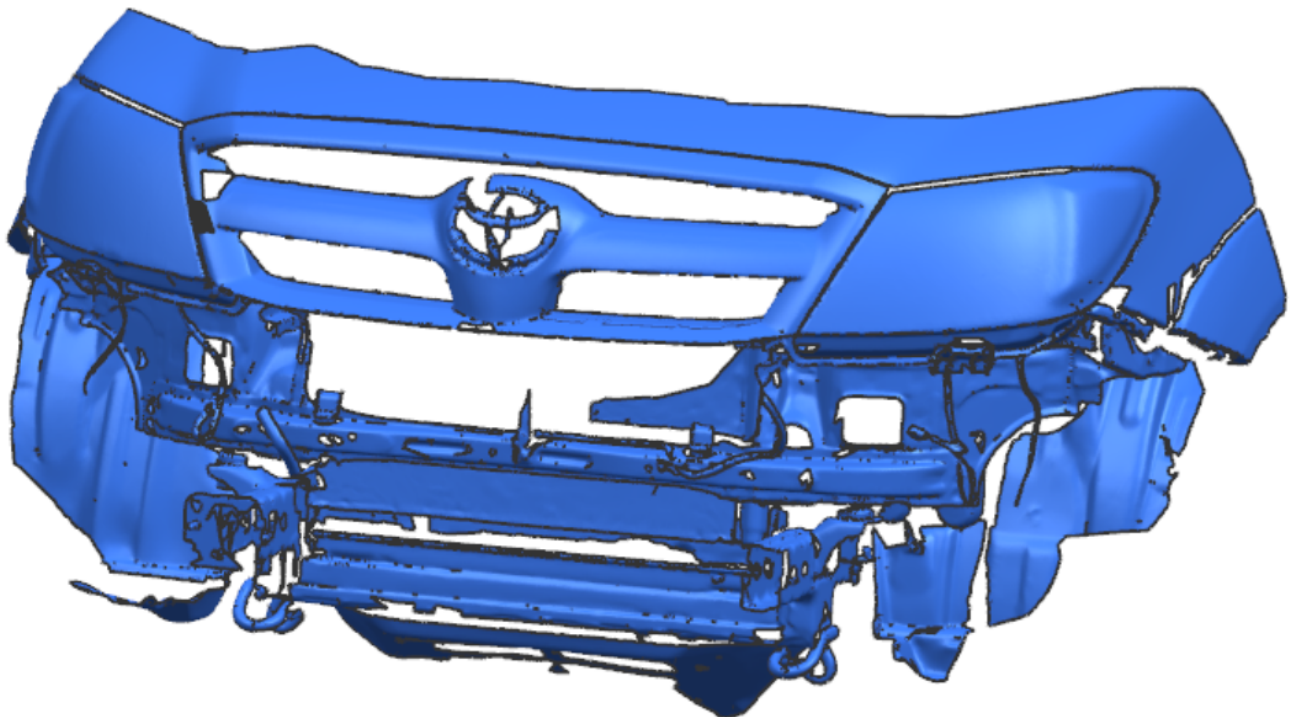
Item	Description	Qty
13	Cage Nut M6	2
14	Hexagonal head bolt M10x120	4
15	Hexagonal head bolt M10x45	2
16	Hexagonal head bolt M12x35	6
17	Hexagonal head bolt M12x40	4
18	Hexagonal head bolt M12x55	2
19	Hexagonal head bolt M6x20	20
20	Hexagonal head Nut M10x1.5	4
21	Hexagonal head Nut M12x1.75	10
22	Hexagonal head Nut M6	2
23	Hexagonal socket bolt M6x16	2
24	Lock Nut M10x1.5	2
25	D10x30_2 Washer	12
26	D6x18_2 Washer	18
27	D6x12_2 Washer	6
28	Spring Washer D10	6
29	Spring Washer D12	12
30	Spring Washer D6	22
31	D12x32_3 Washer	22

ROCKARMOR Fitting instruction

1. Installation Steps:



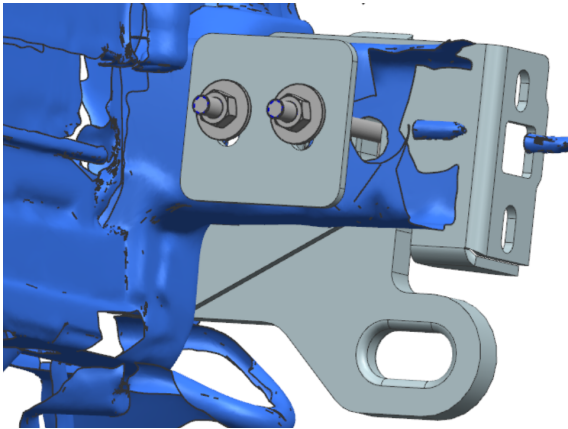
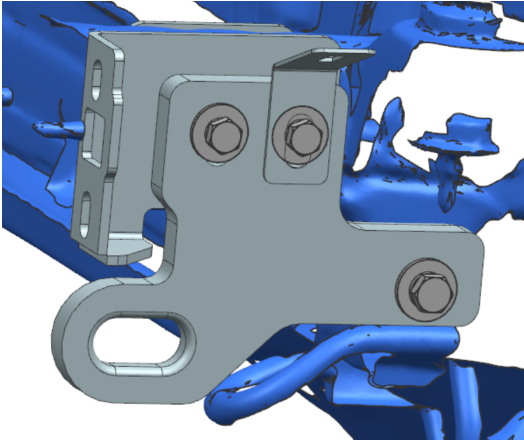
Remove front factory bumper (Take care when unclipping any wiring harnesses)



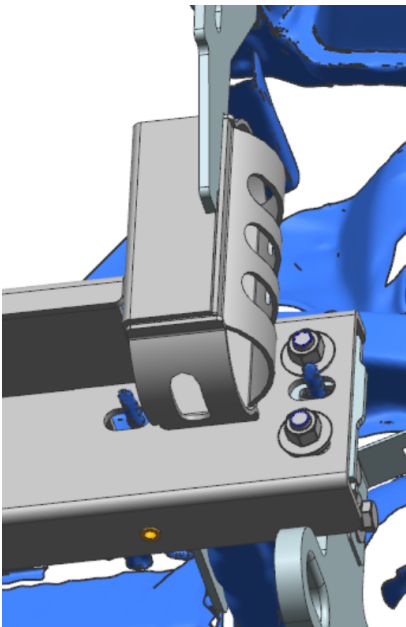
Painting Under the Headlights is Recommended.

ROCKARMOR Fitting instruction

2. Chassis Mount: item 5&6&9 (LHS)

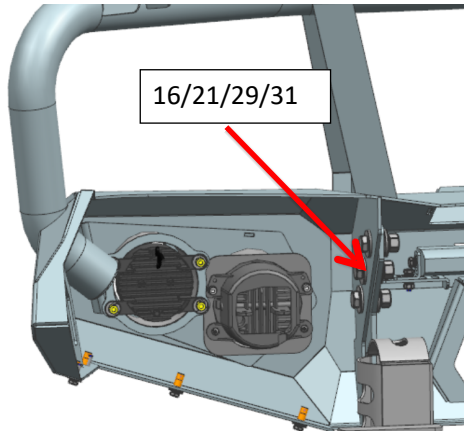


3. install item 2 (LHS)



1. Install Item 1

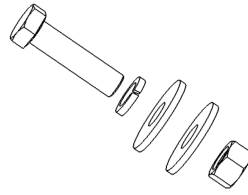
ROCKARMOR Fitting instruction



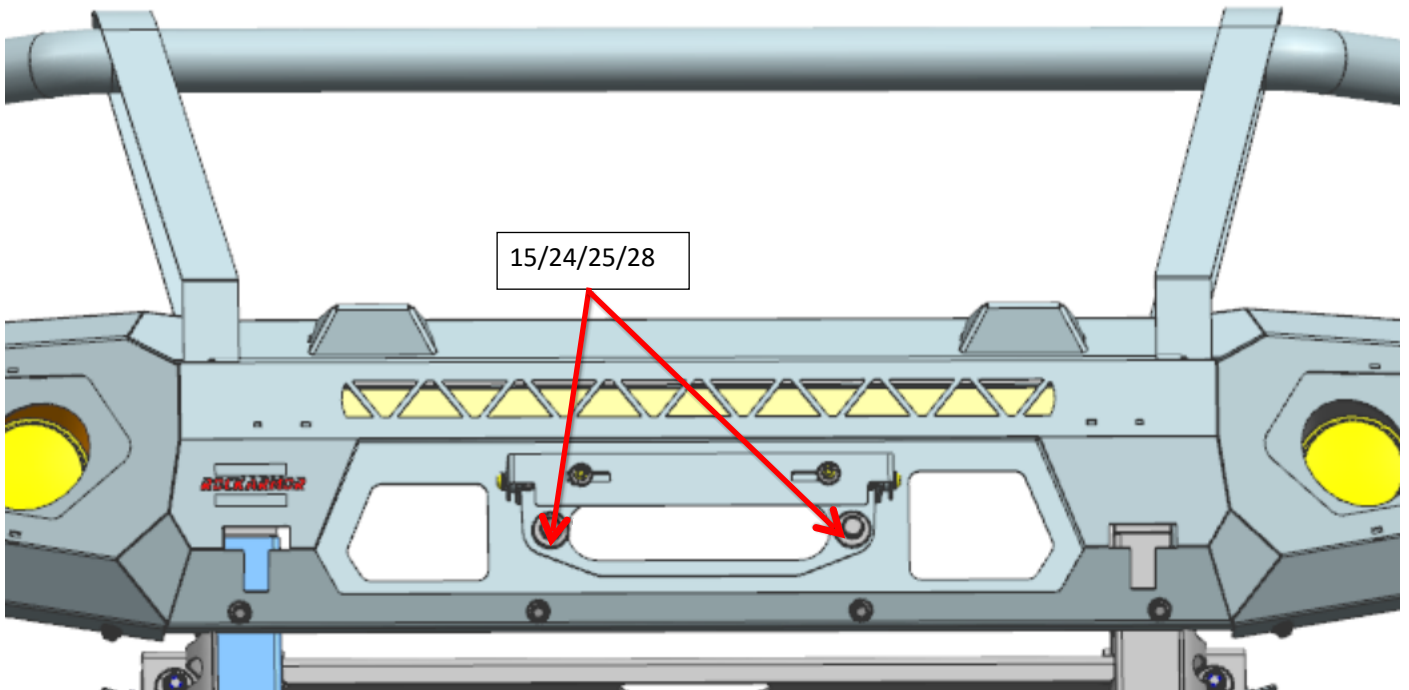
Use below bolt kits:

Item 16/21/29/31 (6)

Hexagonal head bolt M12x35 + Hexagonal head Nut M12x1.75 + D12x32_3 Washer + Spring Washer D12



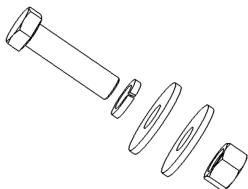
2. Install Item 11



1. Use below bolt kits:

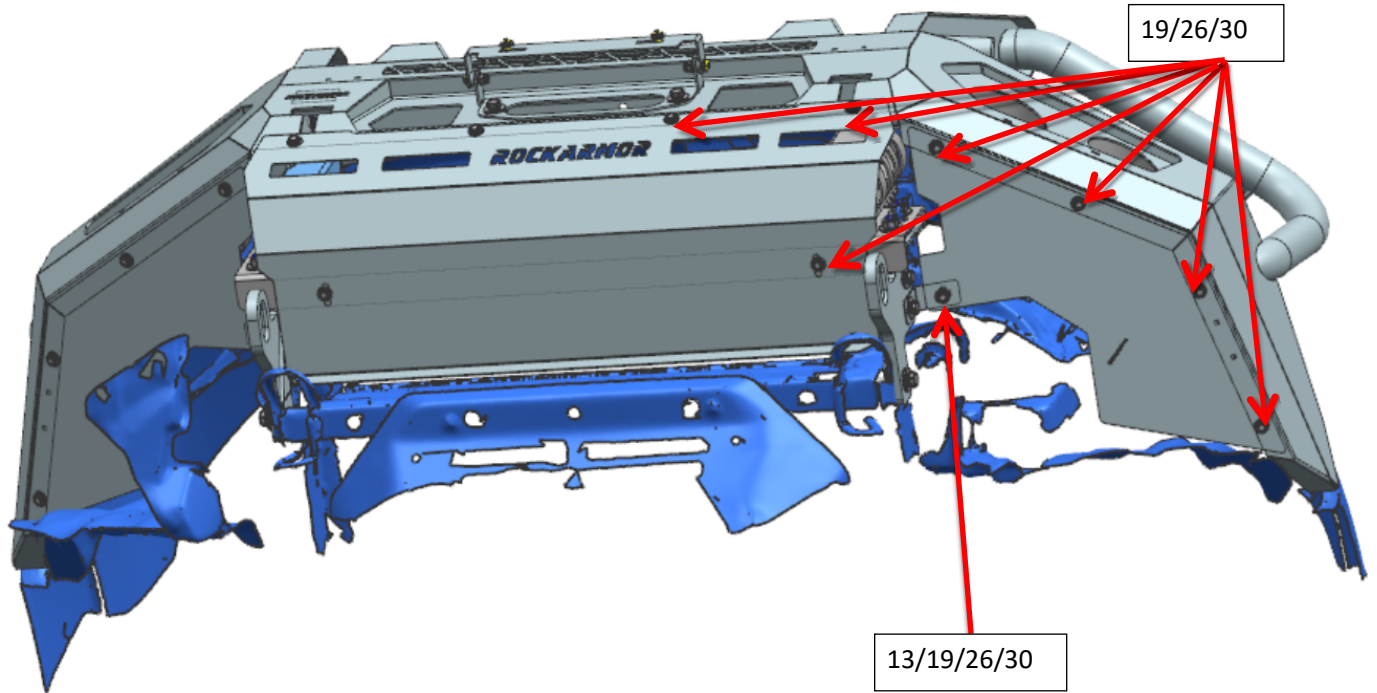
Item 15/24/25/28 (2)

Hexagonal head bolt M10x45 (1) + Hexagonal head Nut M10 (1) + D10x30_2 Washer (2) + Spring Washer D10 (1)



3. Install item 3&4

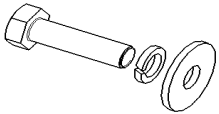
ROCKARMOR Fitting instruction



Use below bolt kits :

1. Item 19/26/30 (11)

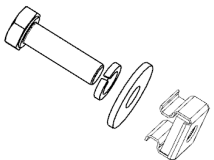
Hexagonal head bolt M6x20+D6x18_2 Washer+Spring Washer D6



2. Use below bolt kits

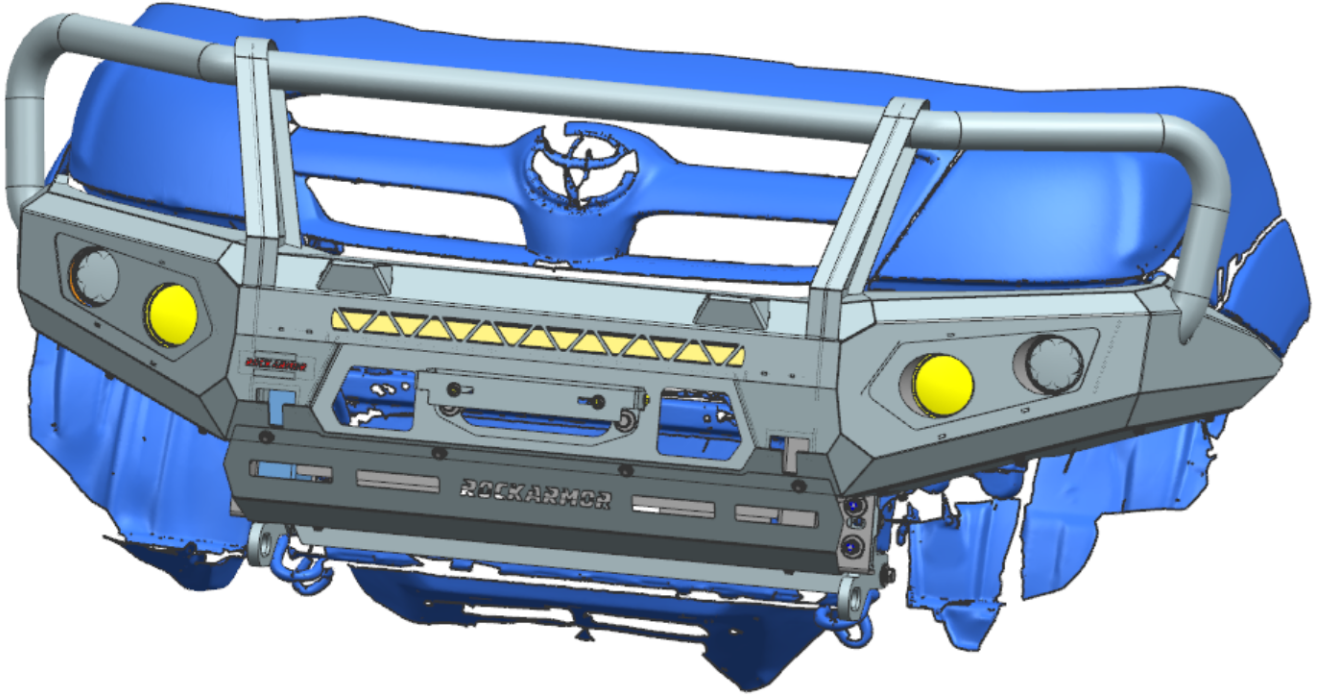
Item 13/19/26/30 (2)

Hexagonal head bolt M6x25+ Flange Nut M6 +D6x22_2 Washer+Spring Washer D6



ROCKARMOR Fitting instruction

7. Assure all mounting points have been tensioned.
8. Cut and fit factory inner guard lining to the wing bash plates.



For more information check out www.rockarmor.com.au and watch our YouTube installation video.