

# ROCKARMOR

## Fitting Instructions

|              |   |
|--------------|---|
| Description: | <b>Mitsubishi Triton MV Rock Sliders/Side Steps</b> |
| Model:       | <b>Mitsubishi Triton MV</b>                         |
| SKU:         | SSSRA-TRI-MV  |



## Important Notice – Please Read Before Installation

Before commencing the installation, please ensure you have **carefully read and understood all instructions**. Rockarmor products are engineered to the highest standards using premium materials and finishes. This includes **sandblasting all raw materials, e-coating to eliminate impurities**, and applying a **Tiger powder coat** for enhanced durability.

Should the product become scratched or damaged during off-road or on-road use, the affected surface must be **repaired promptly** to maintain corrosion resistance and product longevity.

**Installation must be carried out by a qualified technician**, and all steps must be followed precisely to ensure a secure and proper fit.

## Side Impact Airbag Compatibility

If your vehicle is equipped with **side impact airbags**, the Rockarmor side steps have **airbag-compatible brackets** integrated into the design. These brackets allow the side steps to remain compliant with airbag deployment safety standards while still offering robust protection and functionality.

While Rockarmor side steps are engineered to be durable and suitable for off-road use, **we strongly advise against using them as a high-lift jack point**. Applying a high lifting force may compromise the structural integrity of the **airbag support brackets**, and could impact airbag performance in the event of a collision.

## Note: Please Read Before Attempting Installation

- This product and its fixings **must not be modified** unless explicitly stated in these instructions.
- **Do not remove** any product labels or compliance markings.
- This product is intended solely for use on the **specified vehicle model** outlined in this guide.
- The installer must ensure adequate **clearance between the chassis and body**, and proper fitment to all mounting points.
- **Loctite must be applied** to all bolts and nuts during installation.
- Specialized tools may be required, and we strongly recommend installation be carried out by an **experienced 4x4 accessory fitter**.

## Liability Waiver

By proceeding with the installation, the installer acknowledges responsibility for adhering to these instructions.

**Rockarmor Pty Ltd accepts no liability** for any damage, injury, or vehicle malfunction arising from:

- Improper installation
- Use of this product in a way not intended or advised
- Failure to follow the provided fitting guide

Any deviation from the instructions or product modification will **void all warranties** and transfer all associated risks and liabilities to the installer and/or vehicle owner.

## Occupational Health and Safety (OHS) Guidelines for the Workshop

### Hearing Protection

All personnel must wear appropriate hearing protection in high-noise areas or when operating loud machinery to prevent hearing damage.



### Eye Protection

Approved safety glasses or goggles must be worn at all times to shield the eyes from debris, chemicals, and other hazardous materials.



### Safe Manual Handling Procedures

Use correct lifting techniques to avoid strains and injuries. Where possible, utilize mechanical aids and never exceed personal lifting capacity.



### Hazard Awareness and Prevention

Remain vigilant of potential hazards within the workshop. Adhere to all posted warning signs and follow established safety protocols to mitigate risks.



**Please Note:**

- 1) These Side Steps/ Rock Sliders cannot be installed onto other vehicles, in addition to the manufacturer special instructions
- 2) Do not remove labels on the Products.
- 3) Do not change the structure of Side Steps/ Rock Sliders.

**Standard locking torque**

M6 - 11Nm | M8 - 18Nm | M10 - 80 Nm | M12 - 90 Nm | M16 - 90 Nm

## Initial Phase: Removal of Existing Parts

**Inspect Factory Steps** Before unboxing the new steps, please must clear the workspace.



Remove Factory Side Steps



### Instruction:

- Locate the factory mounting brackets. There are typically **3 brackets per side** (Front, Middle, Rear).
- Note that factory steps are usually bolted to the vehicle body/sill, whereas your new heavy-duty steps will bolt to the chassis frame rails.

**Unbolting the Old Steps** Support the step before you remove the final bolts to prevent it from falling on you.

- Using your socket set (usually 12mm or 14mm, pending model), loosen the bolts securing the factory brackets to the vehicle.
- **Tip:** Leave one bolt loosely attached in the middle bracket while you remove the front and rear bolts. This keeps the step from falling until you are ready to lift it off.
- Remove the factory steps and store them aside. You will generally **not** reuse the factory bolts.

## Vehicle Preparation

**Identification & Unboxing** Layout all new brackets to ensure you have the correct orientation.



### Instruction:

- Unwrap all components. Identify the mounting brackets.
- **Note:** The brackets are usually stamped (e.g., "FL" for Front Left, "CR" for Centre Right).
- **Tip:** The Front bracket often has a different angle or shape to clear the wheel arch liner or body mount.

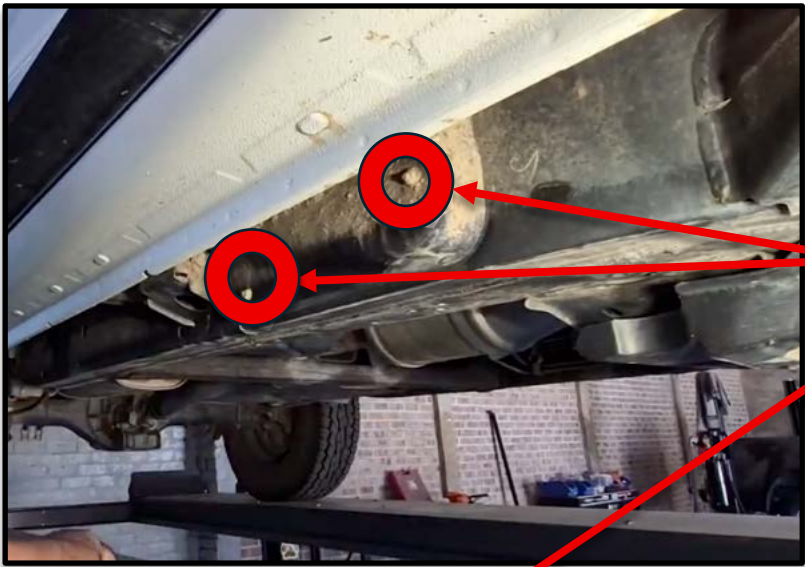
# Driver's Side Preparation

**Driver's Side Preparation (Tech Pack - Electrical Box Removal)**

*Note: This phase applies specifically to the Driver's Side. The passenger side does not have this electrical box obstruction.*

**Remove the Factory Cover** Locate the Tech Pack electrical component box covering the chassis rail under the driver's door.


**use a 10mm ratchet spanner to remove the black plastic cover from the Tech Pack electrical box**



Remove Bolts to open the Tech Pack



**Tools needed for this step**

10mm ratchet spanner → 



**Detach the Electrical Unit** You must remove the unit to access the chassis mounting holes behind it.



Remove Bolts in the  
Tech Pack Box

**Instruction:**

- Remove the two **10mm bolts** holding the electrical components.
- Remove the three **12mm bolts** that secure the factory bracket to the chassis.
- **Important:** Do *not* unplug or disconnect the wiring. Let the unit hang loosely. Please see picture next page

**Tools needed for this step**

10mm & 12mm ratchet spanner

10mm & 12mm Angled impact Driver



**Unclip Wiring Harnesses** Free up the unit so it can be moved aside.

- use a clip remover tool to pop the plastic wire clips off the chassis rail



**Instruction:**

- Use a clip remover tool to detach the plastic clips holding the wiring loom to the chassis/bracket. Pop the plastic wire clips off the chassis rail.
- This allows the electrical unit to hang freely out of the way, exposing the chassis rail for the new brackets.

**Tools Required**

- clip remover



**Inserting Chassis Hardware**

**ROCKARMOR**  
**DRIVERS SIDE**  
**SECURE THE NUT-CERTS TO CHASSIS**



**Front Mounting Point Prep** Prepare the front mounting location.

**Instruction:**

- Locate the large mounting hole at the front.
- Insert a **Capture Nut** (nut on a plate) into the hole.
- **Tip:** Use a piece of tape to hold the capture nut in place so it doesn't fall while you lift the step.



## Centre Mounting Point Prep



### Prepare the middle section.

- View of the two centre capture nuts being fed into the chassis slots.

#### **Instruction:**

- In the centre of the rail, insert the two supplied Capture Nuts into the chassis openings.
- Align them with the bolt holes visible on the outside of the rail.



## Rear Mounting Point Prep



**(The "Rod" Method)** The rear mount uses a bolt welded to a long rod.

- **Suggestion: Bend into a handle shape, with a cable tie attached to it.**

**Instruction:**

- **The Rod:** Take the threaded rod and bend the wire handle so it can be maneuvered easily.
- **Safety Trick:** Attach a **cable tie** to the end of the rod. This prevents it from falling inside the chassis rail if you drop it.
- Feed the rod through the chassis opening so the thread pops out of the top mounting hole.
- Insert a standard Capture Nut into the lower rear hole.



## Mounting the Rock Slider



**Lifting and Securing the Rear** Mount the step, starting at the rear to support the weight.

**Lift onto the vehicle, with the rear rod passing through the bracket.**

**Instruction:**

- Lift the rock slider into position.
- **First Connection:** align the rear bracket over the **threaded rod** you just inserted (top rear hole).
- Loosely secure it with a nut to hold the weight of the step.

Insert the rear lower bolt into the capture nut and hand-tighten.



## Securing Front and Centre



**With the step hanging, secure the remaining points.**

- hand-tightening the bolts on the centre brackets.

**Instruction:**

- **Front:** Insert the bolt into the capture nut you taped earlier. Hand tighten.
- **Centre:** Insert the top and bottom bolts into the capture nuts. Hand tighten.



**ROCKARMOR**

**DRIVERS SIDE**  
**FRONT MOUNTING BRACKET**  
**LEFT MOUNTING BOLT - (ROD BOLT)**

**The Front Top Rod** There is one final mounting point at the front that is done *after* the step is loosely hanging.

**Feed the rod through the opening near the front wiring loom.**

**Instruction:**

- Locate the opening in the chassis near the front wiring loom.
- Measure and bend the rod as required.
- Feed the rod through so it protrudes through the top hole of the front bracket.
- Secure with a nut.



## Final Alignment and Tightening

**ROCKARMOR****DRIVERS SIDE  
SECURE TECH PACK MOUNTING PLATE**

**Tech Pack Slide Plate Installation** If your model has the slide plate/bracket spacer.

- **Slide the separate plate bracket up behind the step mount.**

**Instruction:**

- Slide the backing plate up into place behind the main bracket if required.
- Ensure all bolts (M8/M10) catch the threads.



**Tightening Sequence**  
Level the step before full torque

**ROCKARMOR**  
**DRIVERS SIDE**  
**FASTEN ALL THE MOUNTING POINTS**



**Tighten the centre bolt first with a 16mm socket.**



**Instruction:**

- **Leveling:** Tighten one of the **Centre Bolts** first. This sets the level of the step.
- Check the step is parallel to the body.
- **Torque:** Use a **16mm socket** to tighten all main mounting bolts firmly.



## Trimming the Rods Clean up the installation.

**Using side cutters/pliers to snip off the excess wire rod protruding from the nuts.**

**Instruction:**

- Once tight, the wire handles from the inserted rods will be sticking out.
- Use pliers or side cutters to snip these rods off flush with the nut for a clean finish.



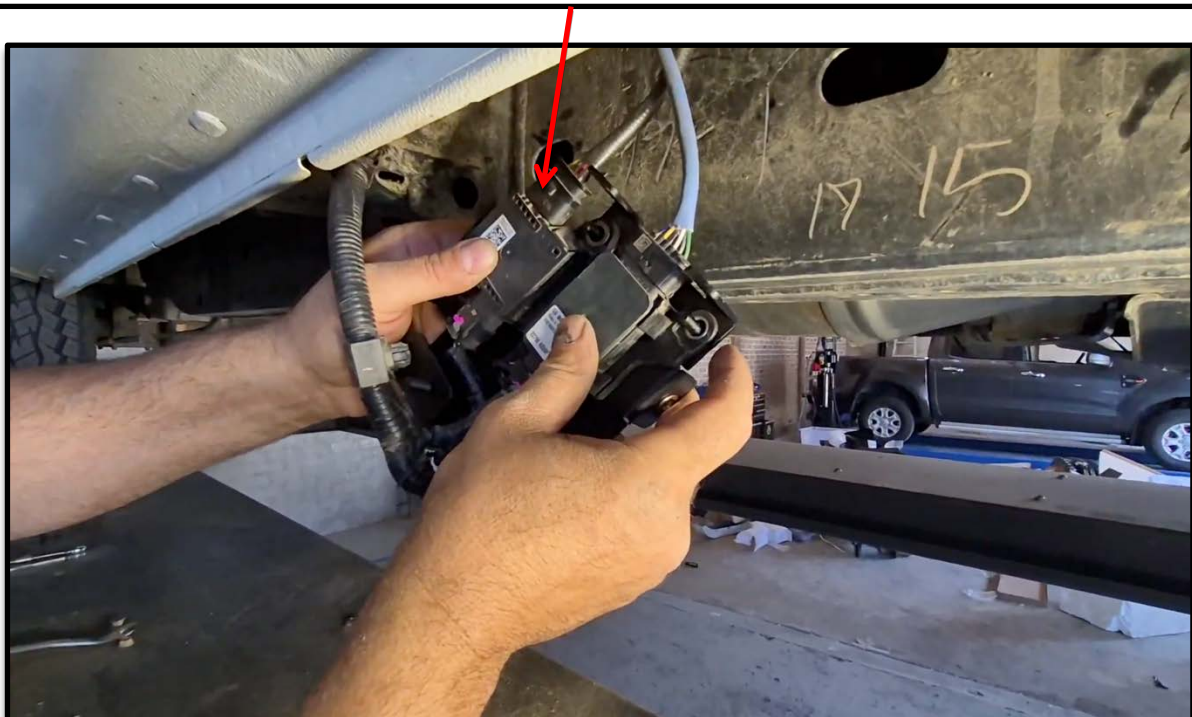
## Re-installing Electrical (Driver's Side)

**ROCKARMOR**

DRIVERS SIDE  
SECURE TECH PACKS TO MOUNTING PLATE

**Installing Relocation Brackets** You must now remount the electrical box over the new rock sliders.

- Locate the two supplied electrical relocation brackets.
- **Orientation:** The longer bracket goes on top; the shorter bracket goes on the bottom.
- Place them over the mounting tabs provided on the rock slider bracket.



## Mounting the Box and Cover

Final assembly.



- The electrical box being bolted to the new relocation brackets.

### Instruction:

- Bolt the electrical unit to these new brackets using the M6 nuts provided.
- Slide the factory black cover back over the unit.
- Secure the cover using the original 10mm bolts (or supplied M6 hardware) to the welded bolt on the bracket.





- Ensure the step is rigid (shake the car by the step).
- Check that the electrical box is secure and not rubbing against the sharp edges of the new steel brackets.
- **Brush Bars:** If installing brush bars later, remember the front modular section can be unbolted.

#### **Final Assembly and Testing**

- Description: Tighten all bolts to the specified torque values. Inspect the installation for stability and ensure all components are securely fastened. Test fit the guard to confirm there are no vibrations or misalignments.
- Safety Note: Do not operate the vehicle without completing the final inspection.

#### **Disclaimer**

Rockarmor Pty Ltd takes no responsibility for any damages, injuries, or vehicle malfunctions resulting from improper installation or failure to follow the provided fitting instructions.

We strongly recommend that the installation of this product be carried out by a qualified and experienced fitter with the appropriate tools and knowledge to ensure safety and proper functionality.

Any modifications to the product or deviations from the instructed procedure will void all warranties and transfer full responsibility to the installer and/or vehicle owner.

By proceeding with the installation, the installer acknowledges and accepts all risks and liabilities associated with the fitting process.