

ROCKARMOR

Fitting Instructions

Description:	Toyota Landcruiser 105 Series Rock Sliders/Side Steps
Model:	Toyota Landcruiser 105 Series
SKU:	SSSRA-FJ80105



Important Notice – Please Read Before Installation

Before commencing the installation, please ensure you have **carefully read and understood all instructions**. Rockarmor products are engineered to the highest standards using premium materials and finishes. This includes **sandblasting all raw materials, e-coating to eliminate impurities**, and applying a **Tiger powder coat** for enhanced durability.

Should the product become scratched or damaged during off-road or on-road use, the affected surface must be **repaired promptly** to maintain corrosion resistance and product longevity.

Installation must be carried out by a qualified technician, and all steps must be followed precisely to ensure a secure and proper fit.

Note: Please Read Before Attempting Installation

- This product and its fixings **must not be modified** unless explicitly stated in these instructions.
- **Do not remove** any product labels or compliance markings.
- This product is intended solely for use on the **specified vehicle model** outlined in this guide.
- The installer must ensure adequate **clearance between the chassis and body**, and proper fitment to all mounting points.
- **Loctite must be applied** to all bolts and nuts during installation.
- Specialized tools may be required, and we strongly recommend installation be carried out by an **experienced 4x4 accessory fitter**.

Liability Waiver

By proceeding with the installation, the installer acknowledges responsibility for adhering to these instructions.

Rockarmor Pty Ltd accepts no liability for any damage, injury, or vehicle malfunction arising from:

- Improper installation
- Use of this product in a way not intended or advised
- Failure to follow the provided fitting guide

Any deviation from the instructions or product modification will **void all warranties** and transfer all associated risks and liabilities to the installer and/or vehicle owner.

Occupational Health and Safety (OHS) Guidelines for the Workshop

Hearing Protection

All personnel must wear appropriate hearing protection in high-noise areas or when operating loud machinery to prevent hearing damage.



Eye Protection

Approved safety glasses or goggles must be worn at all times to shield the eyes from debris, chemicals, and other hazardous materials.



Safe Manual Handling Procedures

Use correct lifting techniques to avoid strains and injuries. Where possible, utilize mechanical aids and never exceed personal lifting capacity.



Hazard Awareness and Prevention

Remain vigilant of potential hazards within the workshop. Adhere to all posted warning signs and follow established safety protocols to mitigate



Please Note:

- 1) These Side Steps/ Rock Sliders cannot be installed onto other vehicles, in addition to the manufacturer special instructions
- 2) Do not remove labels on the Products.
- 3) Do not change the structure of Side Steps/ Rock Sliders.

Standard locking torque

M6 - 11Nm | M8 - 18Nm | M10 - 80 Nm | M12 - 90 Nm | M16 - 90 Nm

Please Note:

- 1) These Side Steps/ Rock Sliders cannot be installed onto other vehicles, in addition to the manufacturer special instructions
- 2) Do not remove labels on the Products.
- 3) Do not change the structure of Side Steps/ Rock Sliders.

Standard locking torque

M6 - 11Nm | M8 - 18Nm | M10 - 80 Nm | M12 - 90 Nm | M16 - 90 Nm

Identify Hardware

Your fitting kit contains:

Rear Mounting Hardware

- Large U-bolt
- Flat washers
- Captive nuts

Front Mounting Hardware

- Small U-bolt
- Flat washers
- Captive nuts

Spacer Plates

- Optional spacer brackets

Used to:

- Move slider closer to vehicle
- Move slider further away from vehicle
- Fine tune body clearance

1. Installation Steps:

VEHICLE PREPARATION

Secure Vehicle

1. Park vehicle on level ground.
2. Apply handbrake.
3. Chock wheels if required.
4. Raise vehicle if using hoist.

Remove Factory Side Steps

1. Remove existing side steps.
2. Remove mounting brackets.
3. Remove any remaining hardware.
4. Clean chassis mounting locations.

Inspect Rock Slider Before Installation

Inspect:

Checker Plate Step

Provides:

- Non-slip footing
- Easy roof access
- Safer vehicle entry and exit

Folded Inner Edge

Designed to:

- Sit underneath vehicle sill
- Prevent dirt accumulation
- Protect body seam from stone damage

Anti-Vibration Rubber Strip

Installed between:

- Step plate
- Main tube

Purpose:

- Reduce vibration
- Eliminate rattles





Dual Rail Design

Rockarmor's signature feature:

Provides:

- Side impact protection
- Rock protection
- Ledge protection
- Chassis reinforcement

Modular Front Section

Can be removed to allow installation of:

- Brush bars
- Side rails

REAR MOUNT INSTALLATION



Position Rock Slider

- Lift slider into position.
- Align with chassis.
- Support slider during installation.

Align Rear Mounting Bracket

- Locate rear chassis bracket.
- Align rear slider bracket directly against chassis mount.
- Confirm mounting holes align correctly.

Install Rear U-Bolt

- Take large U-bolt.
- Wrap U-bolt around chassis rail.
- Feed both threaded ends through rear mounting bracket.

REAR MOUNT INSTALLATION

Install Rear Flat Washers

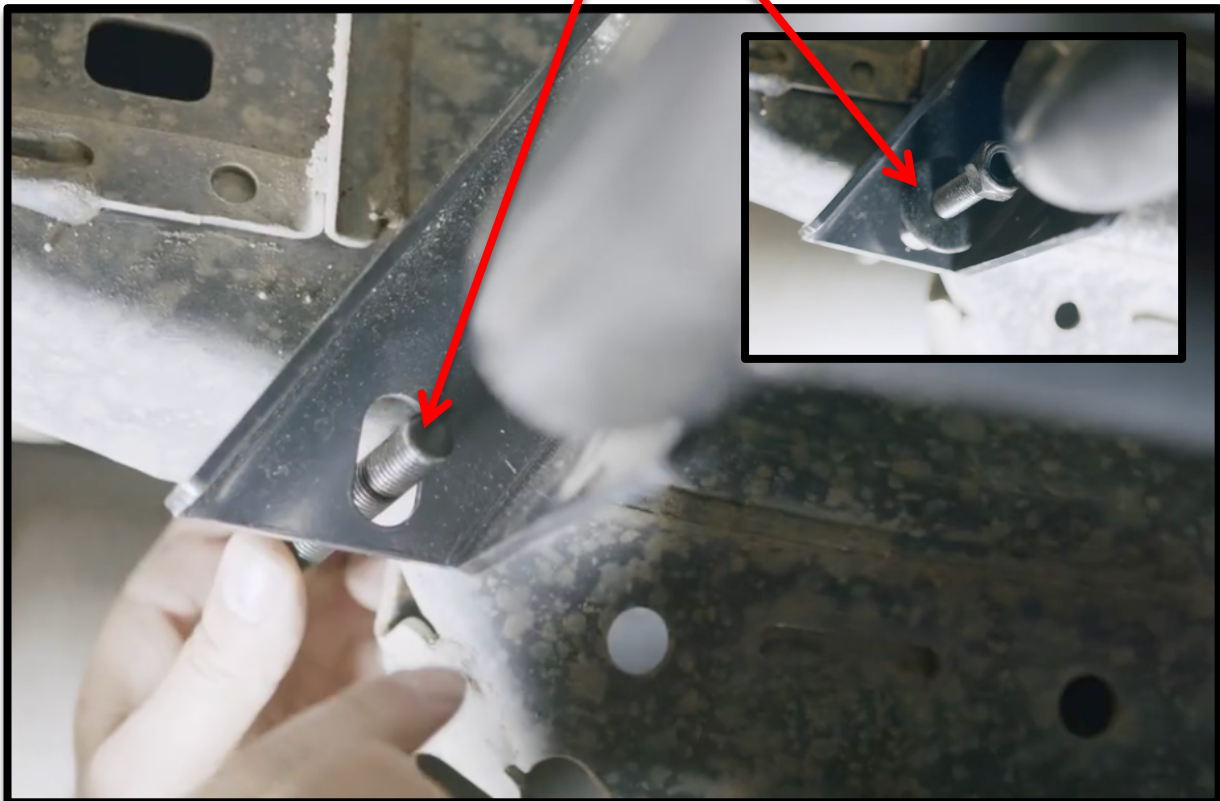
- Install flat washer onto each threaded stud.
- Ensure washer sits flat against bracket.

Install Rear Captive Nuts

- Thread captive nuts onto U-bolt.
- Hand tighten only.

Leave Rear Mount Loose

- Do not fully tighten.
- Allow movement for front alignment.



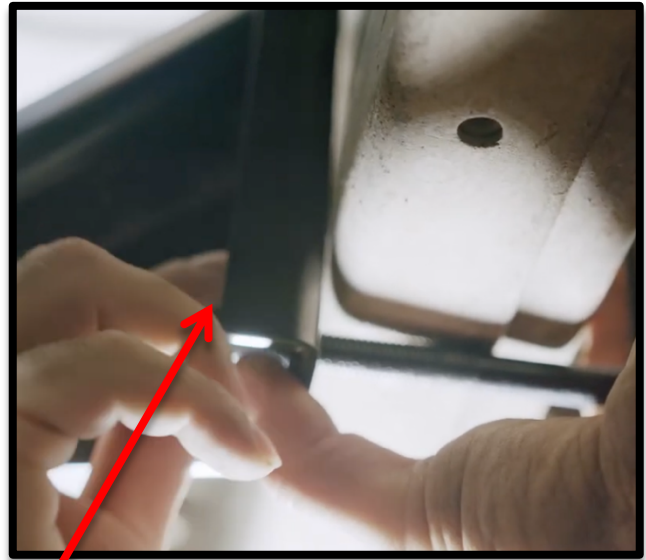
Install Front U-Bolt

- Take small U-bolt.
- Feed around chassis rail.
- Pass threaded ends through front bracket.

Confirm Exhaust Clearance

- Check U-bolt does not contact exhaust.
- Ensure adequate clearance.





Install Front Flat Washers

- Fit flat washer onto each threaded end.

Install Front Nuts

- Thread captive nuts onto U-bolt.
- Hand tighten only.





ALIGNMENT PROCEDURE

Check Front Alignment

- Ensure front of slider is parallel with sill.
- Check body clearance.

Check Rear Alignment

- Ensure rear of slider follows body line.
- Verify even gap.

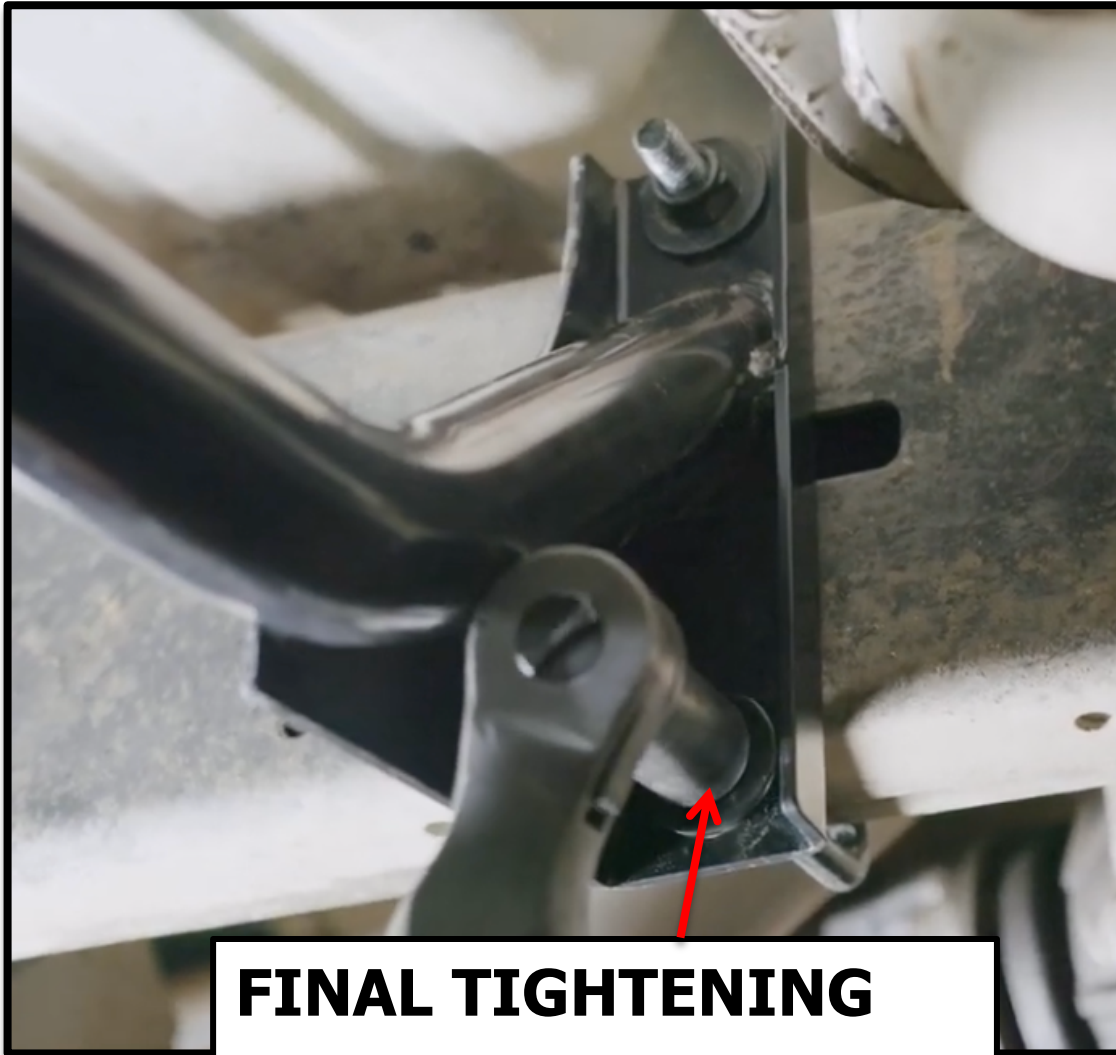
Verify Folded Edge Position

- Confirm folded edge sits beneath vehicle sill.
- Ensure protection of body seam.

Verify Dual Rail Position

- Check inner rail sits close to sill.
- Confirm maximum protection coverage.





FINAL TIGHTENING

Tighten Rear Mount

1. Tighten rear U-bolt evenly.
2. Alternate between nuts.
3. Ensure bracket seats squarely.

Tighten Front Mount

1. Tighten front U-bolt evenly.
2. Maintain slider alignment.

Final Torque Check

1. Recheck all hardware.
2. Confirm no movement in slider.

All mounting hardware uses 19mm tools.

FINAL INSPECTION

Inspect Overall Fitment

Check:

- Slider level
- Even body gaps
- Chassis clearance
- Exhaust clearance
- Hardware tightness

Final Road Test

- Drive vehicle.
- Listen for rattles.
- Recheck hardware after first trip.

POST-INSTALLATION RECOMMENDATIONS

Recheck Hardware After:

- 100 km
- First off-road trip
- Heavy corrugation use

Inspect For:

- Loose U-bolts
- Chassis movement
- Paint damage
- Exhaust clearance
- Body clearance

Final Assembly and Testing

- Description: Tighten all bolts to the specified torque values. Inspect the installation for stability and ensure all components are securely fastened. Test fit the guard to confirm there are no vibrations or misalignments.
- Safety Note: Do not operate the vehicle without completing the final inspection.

Disclaimer

Rockarmor Pty Ltd takes no responsibility for any damages, injuries, or vehicle malfunctions resulting from improper installation or failure to follow the provided fitting instructions.

We strongly recommend that the installation of this product be carried out by a qualified and experienced fitter with the appropriate tools and knowledge to ensure safety and proper functionality.

Any modifications to the product or deviations from the instructed procedure will void all warranties and transfer full responsibility to the installer and/or vehicle owner.

By proceeding with the installation, the installer acknowledges and accepts all risks and liabilities associated with the fitting process.