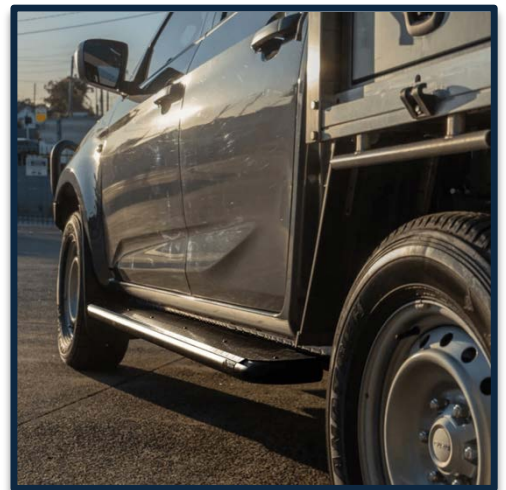
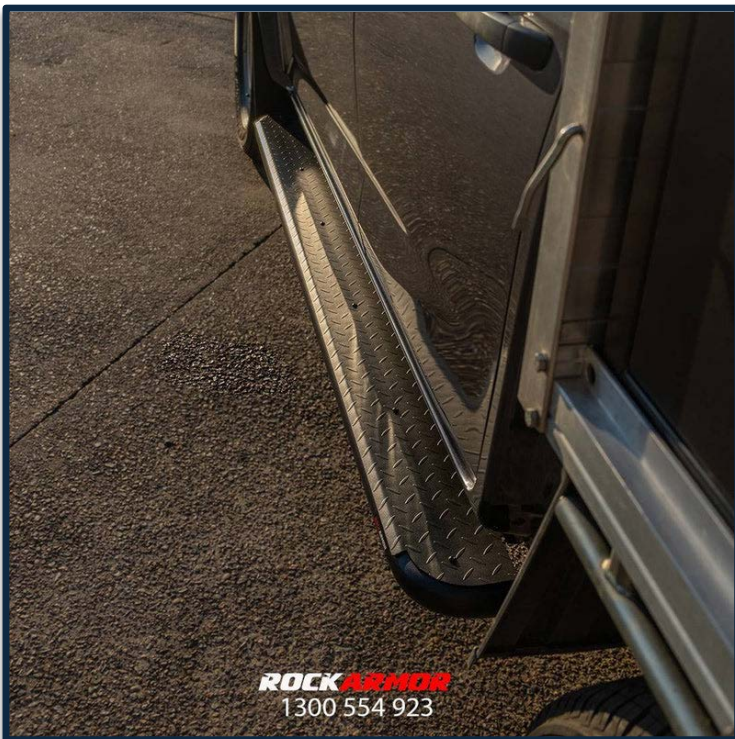


# ROCKARMOR

## Fitting Instructions

Description:	ISUZU DMAX 08/2020- CURRENT <b>Rock Sliders/Side Steps</b>
Model:	ISUZU DMAX 08/2020 -CURRENT
SKU:	SSSRA-DMAX20



### Important Notice – Please Read Before Installation

Before commencing the installation, please ensure you have **carefully read and understood all instructions**. Rockarmor products are engineered to the highest standards using premium materials and finishes. This includes **sandblasting all raw materials, e-coating to eliminate impurities**, and applying a **Tiger powder coat** for enhanced durability.

Should the product become scratched or damaged during off-road or on-road use, the affected surface must be **repaired promptly** to maintain corrosion resistance and product longevity.

**Installation must be carried out by a qualified technician**, and all steps must be followed precisely to ensure a secure and proper fit.

### Side Impact Airbag Compatibility

If your vehicle is equipped with **side impact airbags**, the Rockarmor side steps have **airbag-compatible brackets** integrated into the design. These brackets allow the side steps to remain compliant with airbag deployment safety standards while still offering robust protection and functionality.

While Rockarmor side steps are engineered to be durable and suitable for off-road use, **we strongly advise against using them as a high-lift jack point**. Applying a high lifting force may compromise the structural integrity of the **airbag support brackets**, and could impact airbag performance in the event of a collision.

### Note: Please Read Before Attempting Installation

- This product and its fixings **must not be modified** unless explicitly stated in these instructions.
- **Do not remove** any product labels or compliance markings.
- This product is intended solely for use on the **specified vehicle model** outlined in this guide.
- The installer must ensure adequate **clearance between the chassis and body**, and proper fitment to all mounting points.
- **Loctite must be applied** to all bolts and nuts during installation.
- Specialized tools may be required, and we strongly recommend installation be carried out by an **experienced 4x4 accessory fitter**.

### Liability Waiver

By proceeding with the installation, the installer acknowledges responsibility for adhering to these instructions.

**Rockarmor Pty Ltd accepts no liability** for any damage, injury, or vehicle malfunction arising from:

## Fitting Instructions

---

- Improper installation
- Use of this product in a way not intended or advised
- Failure to follow the provided fitting guide

Any deviation from the instructions or product modification will **void all warranties** and transfer all associated risks and liabilities to the installer and/or vehicle owner.

## Occupational Health and Safety (OHS) Guidelines for the Workshop

### Hearing Protection

All personnel must wear appropriate hearing protection in high-noise areas or when operating loud machinery to prevent hearing damage.



### Eye Protection

Approved safety glasses or goggles must be worn at all times to shield the eyes from debris, chemicals, and other hazardous materials.



### Safe Manual Handling Procedures

Use correct lifting techniques to avoid strains and injuries. Where possible, utilize mechanical aids and never exceed personal lifting capacity.



### Hazard Awareness and Prevention

Remain vigilant of potential hazards within the workshop. Adhere to all posted warning signs and follow established safety protocols to mitigate risks.



**Please Note:**

- 1) These Side Steps/ Rock Sliders cannot be installed onto other vehicles, in addition to the manufacturer special instructions
- 2) Do not remove labels on the Products.
- 3) Do not change the structure of Side Steps/ Rock Sliders.

**Standard locking torque**

M6 - 11Nm | M8 - 18Nm | M10 - 80 Nm | M12 - 90 Nm | M16 - 90 Nm

Item	Description	Qty
7	D8x28_3 Washer	1
8	Hexagonal head bolt M10x40	0
9	Hexagonal head bolt M8x30	10
10	Hexagonal head Nut M8	2
11	D10x30_2.5 Washer	0
12	D8x24_2 Washer	9
13	Spring Washer D10	0
14	Spring Washer D8	10

### 1. Installation Steps:

**Remove the Original Plastic Sidestep**

### Important Notes Before Installation

- Ensure all components and hardware are present before starting.
- Installation is easier with **two people**.
- Use **flat washers + spring washers on all bolts**.
- Apply **thread locker (Loctite)** to all bolts.
- Do not fully tighten until alignment is complete.
- Some chassis holes are **non-threaded** — supplied rods/U-bolts must be used.
- Ensure fuel lines are not pinched or damaged during installation.

### Supplied Components Overview

The fitting kit includes:

- Threaded rods with welded nuts (for non-threaded chassis points)
- U-bolts (rear mounting)
- Crusher tubes (chassis protection)
- Spacer plates
- Fuel line spacer brackets
- Nuts, bolts, flat washers, spring washers
- Lay out all hardware and brackets.
- Identify:
  - Rear mounting hardware (U-bolt)
  - Centre mounting hardware (crusher tube + bolt)
  - Front mounting rods
- Unwrap the side steps (rock sliders).

Lay all components out before starting to make installation easier.





### Install Rear U-Bolt

- Locate rear chassis mounting holes
- Feed U-bolt through chassis
- Secure temporarily with  **cable tie**  to prevent it falling inside

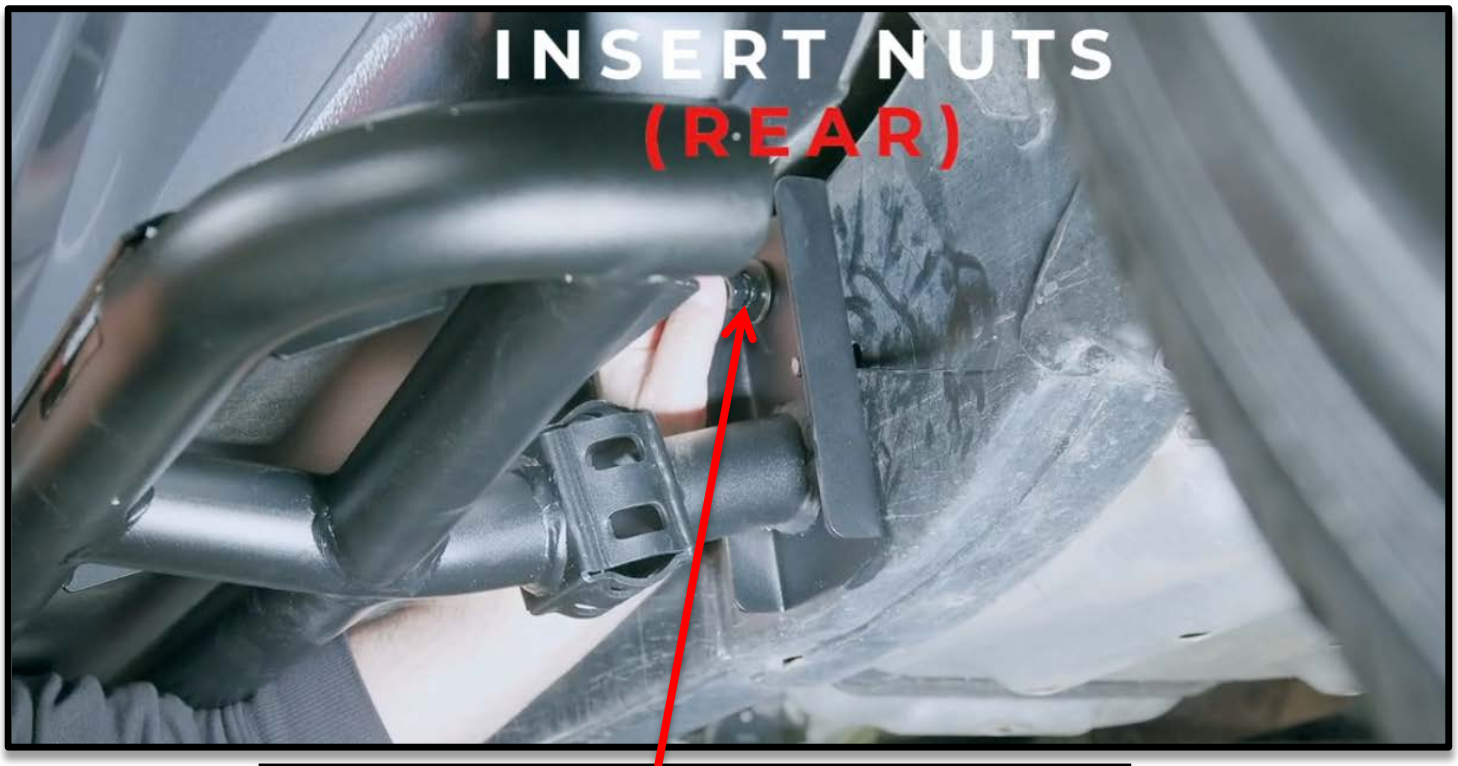




### Install Rear U-Bolt

- Locate rear chassis mounting holes
- Feed U-bolt through chassis
- Secure temporarily with  **cable tie**  to prevent it falling inside

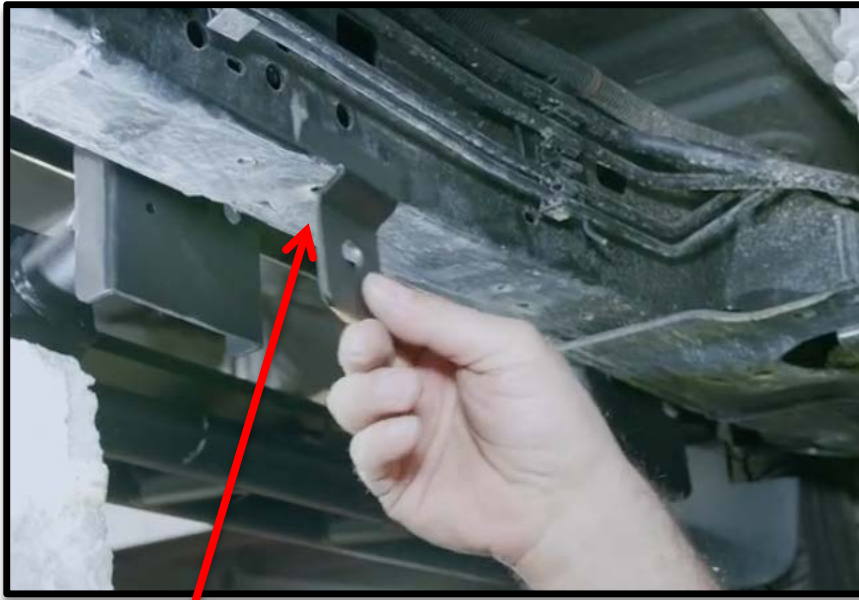




### **Mount Sidestep onto Rear Points**

- Lift sidesteps into position
- Align with U-bolt
- Install:
  1. Flat washer
  2. Spring washer
  3. Nut





## Fuel Line Clearance

### Install Fuel Line Spacer Brackets

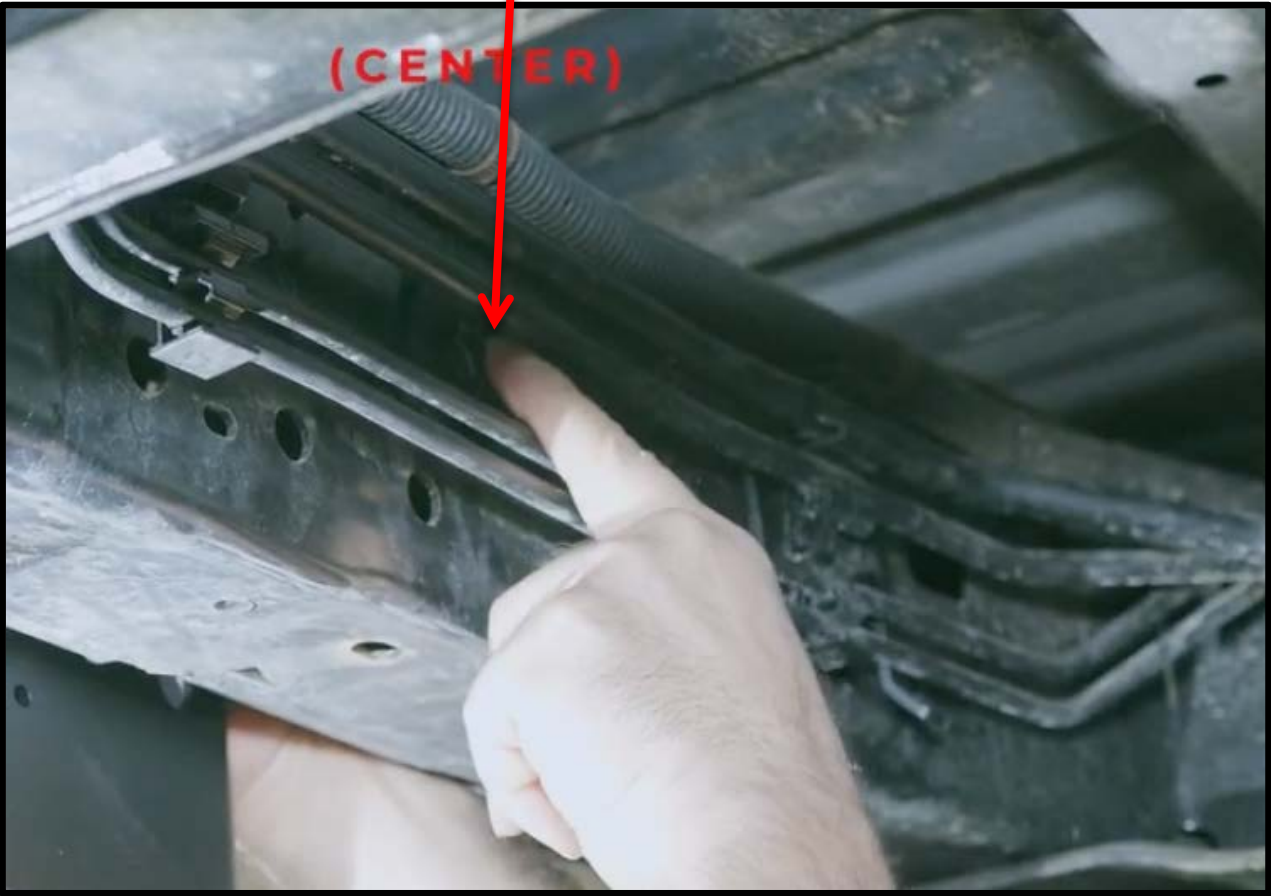
- Locate fuel line clip on chassis
- Remove clip using pry tool
- Insert supplied spacer bracket underneath
- Reclip fuel line into position

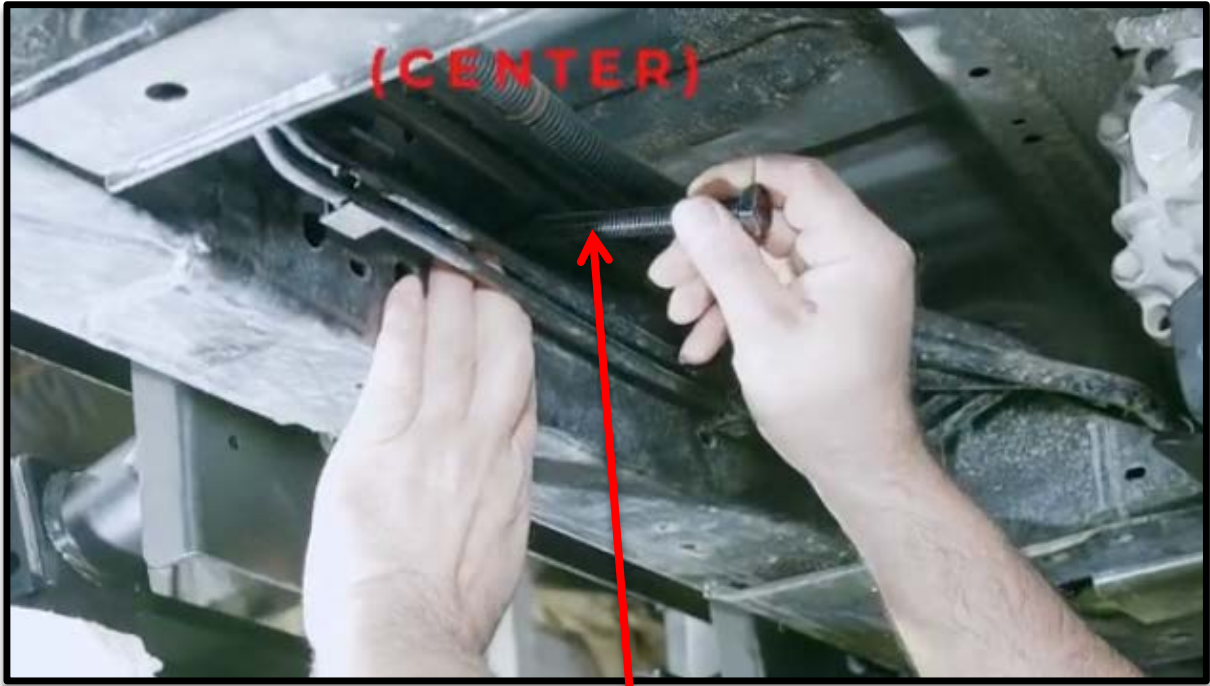
✓ Ensure clearance between chassis and bracket





**Centre Bolt Location**





### Insert Centre Bolt

- Feed bolt through chassis and spacer
- Secure using:
  1. Flat washer
  2. Spring washer
  3. Nut

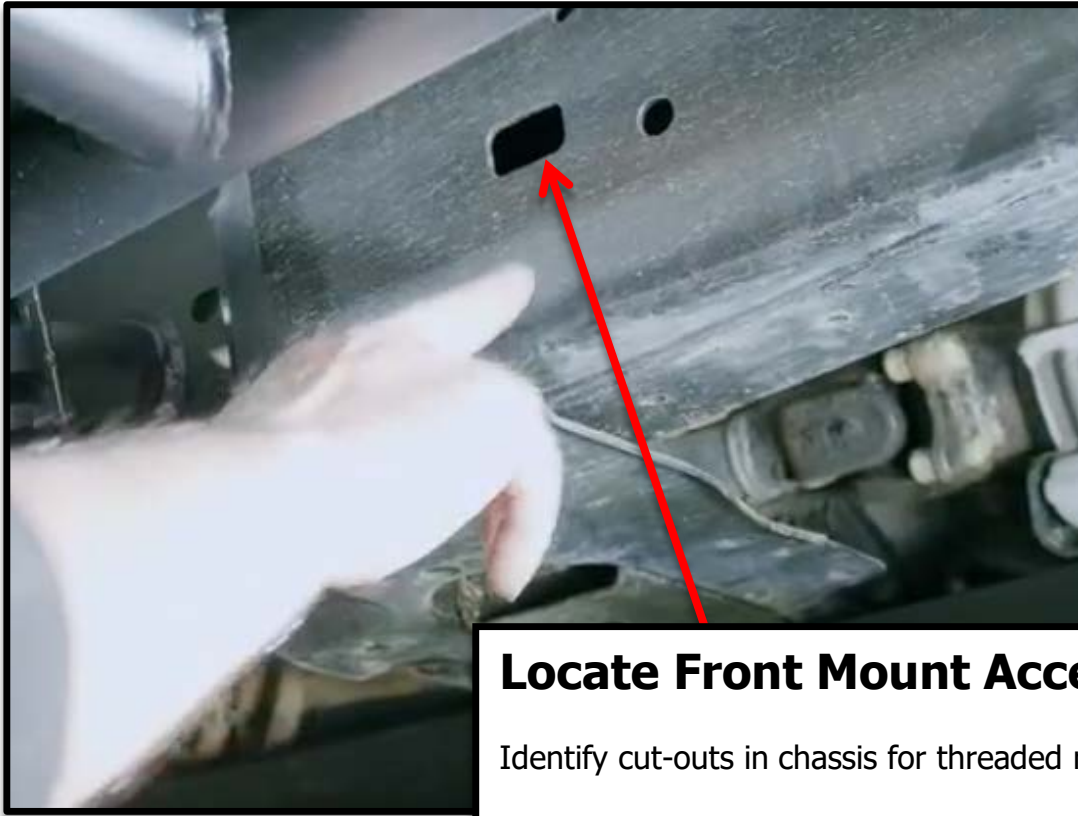
⚠ Leave hand tight



### Install Crusher Tube

- Insert crusher tube into chassis
- Feed bolt through tube

✓ Prevents chassis crushing when tightening



### Locate Front Mount Access Points

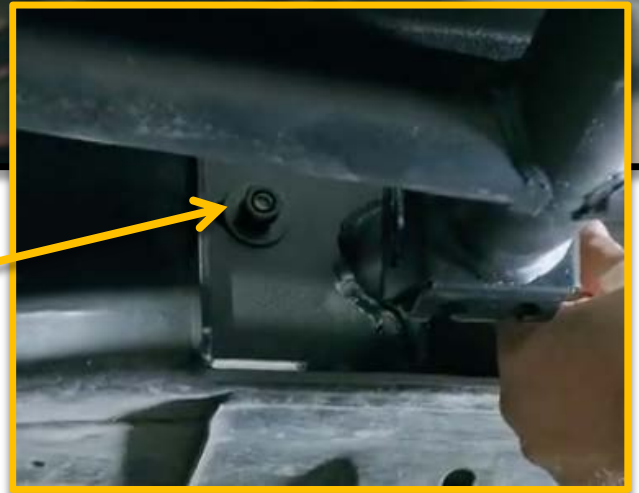
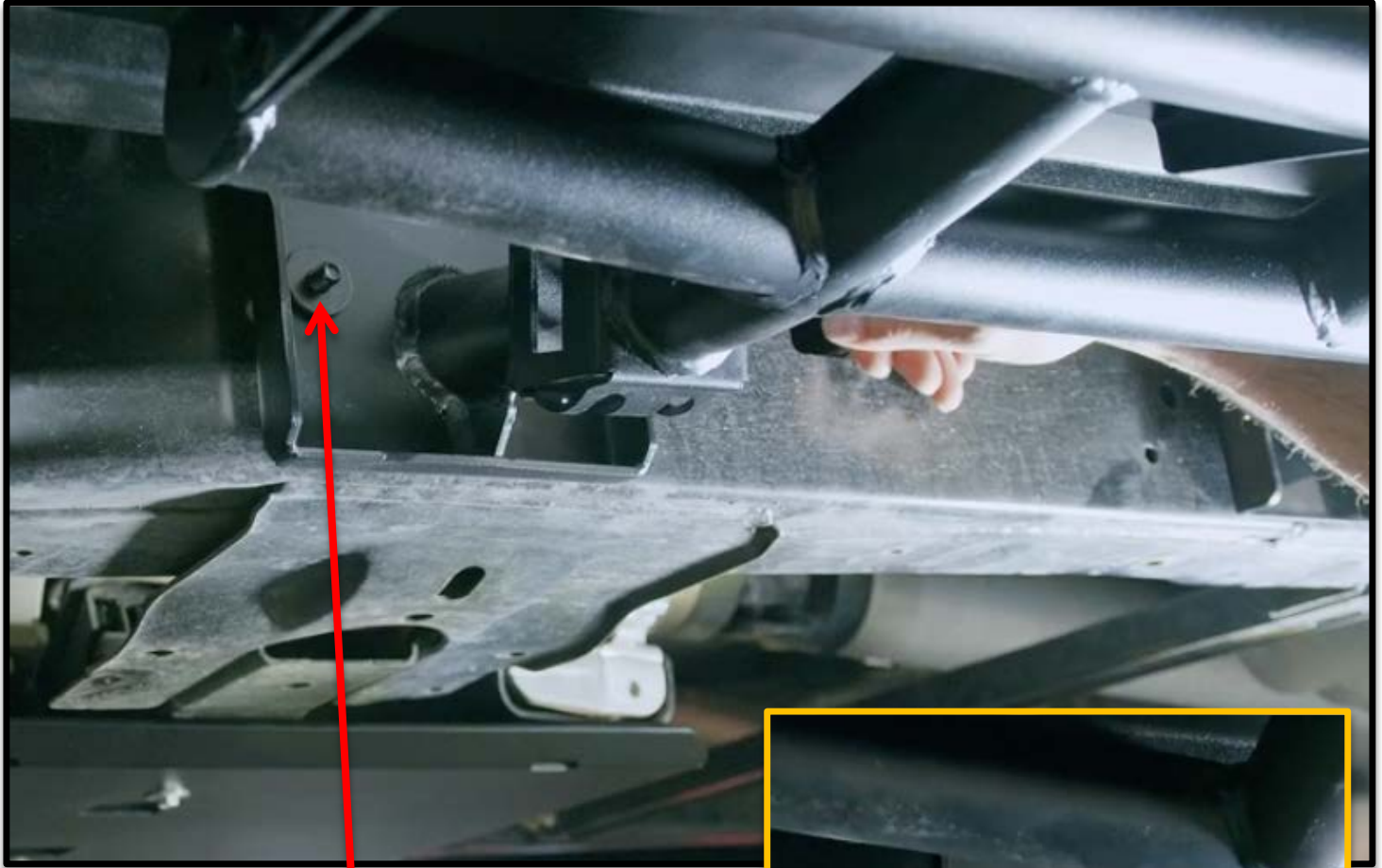
Identify cut-outs in chassis for threaded rods



### Install Threaded Rods

- Insert first rod to pick up front mounting point
- Insert second rod to pick up rear point
- Bend slightly if required for alignment





## Secure First Front Mount

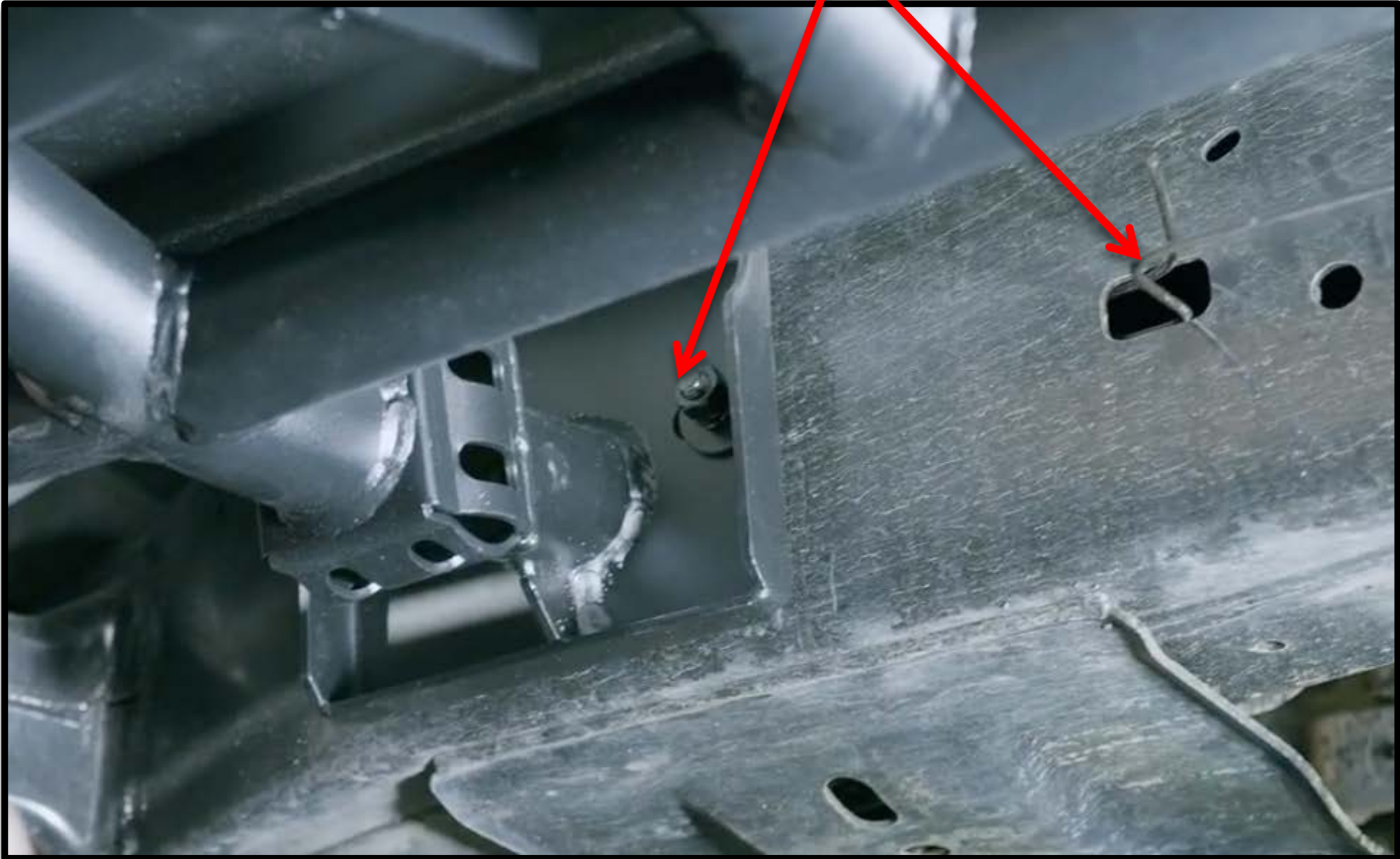
Install:

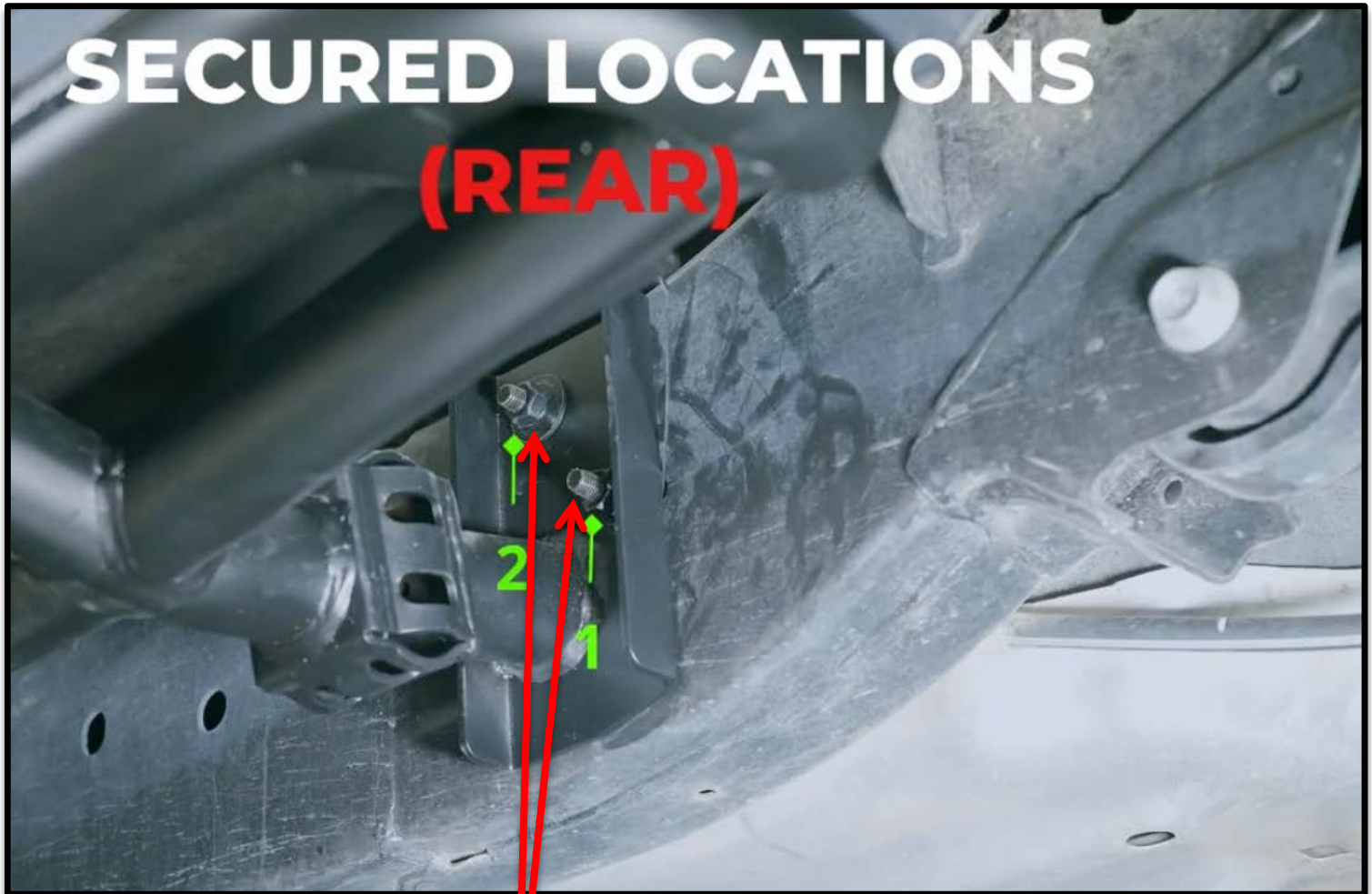
- Flat washer
- Spring washer
- Nut

Hand tighten only as this stage



**Secure Second Front Mount**  
Repeat process for second mounting point





## Alignment & Tightening

1. Ensure step is level with vehicle body
2. Check alignment along sill

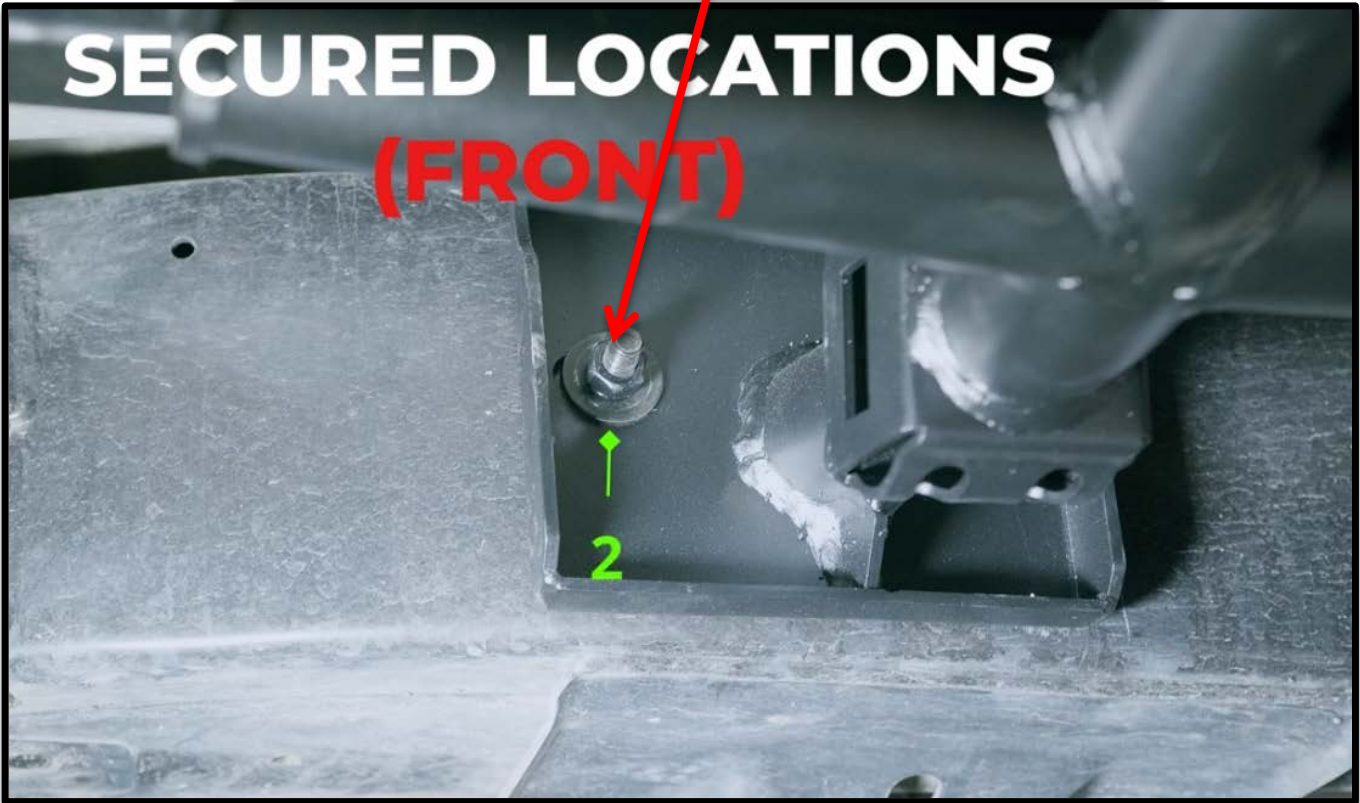
Tighten all bolts:

- Rear mounts: **16mm**
- Front mounts: **16mm**
- Centre mount: **18mm**



**Alignment & Tightening**

- 3. Ensure step is level with vehicle body
- 4. Check alignment along sill





## Check Installation

Confirm:

- All bolts are tightened correctly
- Step is level and secure
- Fuel lines are clipped and not pinched
- Crusher tube installed correctly
- No movement or flex



**Final Assembly and Testing**

- Description: Tighten all bolts to the specified torque values. Inspect the installation for stability and ensure all components are securely fastened. Test fit the guard to confirm there are no vibrations or misalignments.
- Safety Note: Do not operate the vehicle without completing the final inspection.

**Disclaimer**

Rockarmor Pty Ltd takes no responsibility for any damages, injuries, or vehicle malfunctions resulting from improper installation or failure to follow the provided fitting instructions.

We strongly recommend that the installation of this product be carried out by a qualified and experienced fitter with the appropriate tools and knowledge to ensure safety and proper functionality.

Any modifications to the product or deviations from the instructed procedure will void all warranties and transfer full responsibility to the installer and/or vehicle owner.

By proceeding with the installation, the installer acknowledges and accepts all risks and liabilities associated with the fitting process.