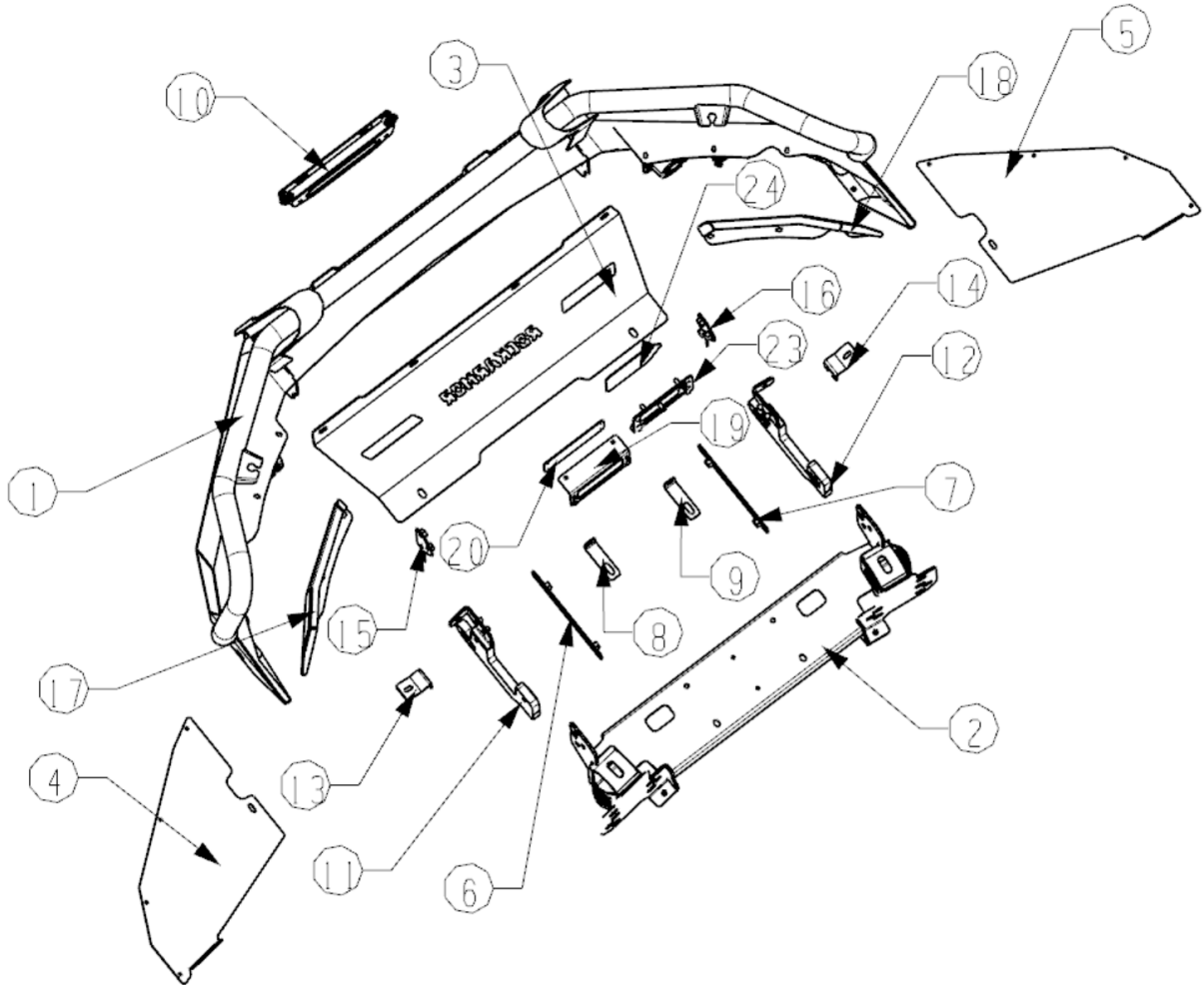


ROCKARMOR Fitting instruction

Description:	GT Bull Bar to Suit 2015+ Ranger PXII PXIII
Model:	2015+ Ranger
Item NO.:	BBRA-RANGGT



ROCKARMOR Fitting instruction



Note: PLEASE READ BEFORE ATTEMPTING INSTALLATION.

- All Rockarmor products are manufactured to highest of standards and latest finishes including sand blasting all raw material and e coating to clear the product of any impurities and finished with a tiger coat to keep the longevity if at any stage while off road or on road use this product is damaged or scratched have the damaged surface repaired.
- This product and its fixings must not be modified in any way unless stated in this fitting instruction.
- Do not remove labels from this product.
- Do not use this product for any vehicle other than specified in these instructions.
- It is the installer's responsibility to assure this product is installed correctly allowing enough tolerance for movement between the chassis and body and clearance of all components.
- Use Loctite on all nuts and bolts.
- The installation of this product may require the use of specialized tools and or trained fitter.

For more information regarding this product please visit www.Rockarmor.com.au

The following tools will be required to install the product.

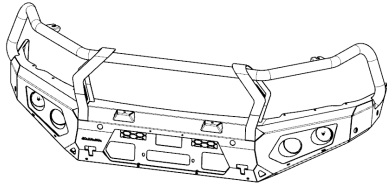
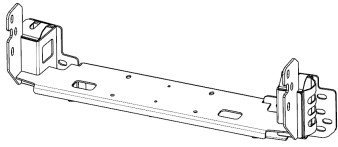
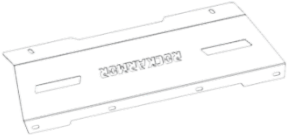
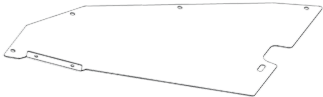
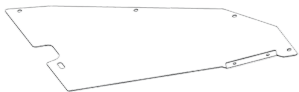
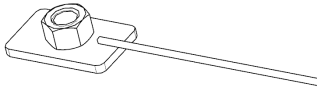
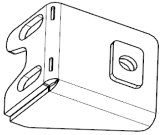
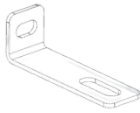
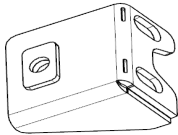

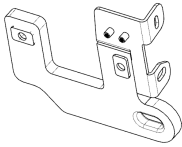
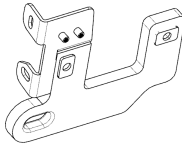


Metric Socket Set 10-18MM.
Socket Extension Bar
Metric Spanner Set 10-18MM.
Torx Drivers T25-T30
Trim Removal Tool
Screwdriver Set (Flat and Phillips head)
Utility Knife
Side Cutters

ROCKARMOR Fitting instruction

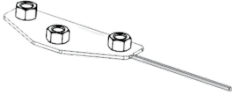
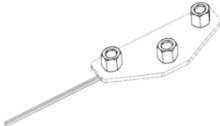
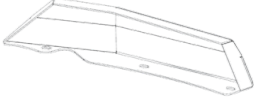
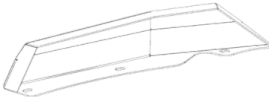


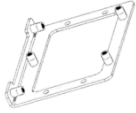


Standard locking torque

M6 - 11Nm | M8 - 18Nm | M10 - 80 Nm | M12 - 90 Nm | M16 - 90 Nm

Bill Of Material List

Item	Description	Qty	Item	Description	Qty
1	 Bull bar assemble	1	2	 Winch Frame	1
3	 Centre bash plate	1	4	 Bash plate (LH)	1
5	 Bash plate (RH)	1	6	 M12 Nut Plate	2
7	 Inner Reinforcement Bracket (LH)	1	8	 Grill Holder	2
9	 Inner Reinforcement Bracket (RH)	1	10	 License Plate Holder	1
11	 Recovery point (LH)	1	12	 Recovery point (RH)	1
13	 Bash Plate Holder	2	14	 Reinforcement Brace	1

ROCKARMOR Fitting instruction

15	 Fitment Plate (LH)	1	16	 Fitment Plate (RH)	1
17	 Infill (LH)	1	18	 Infill (RH)	11
19	 Tech Pack Holder (PX3)	1	20	 Tech Pack Cover (PX3)	1
21	 Tech Pack Holder (PX2)	1	22	 Tech Pack Cover (PX2)	1
N/A	 Pinch mold (500mm)	1			

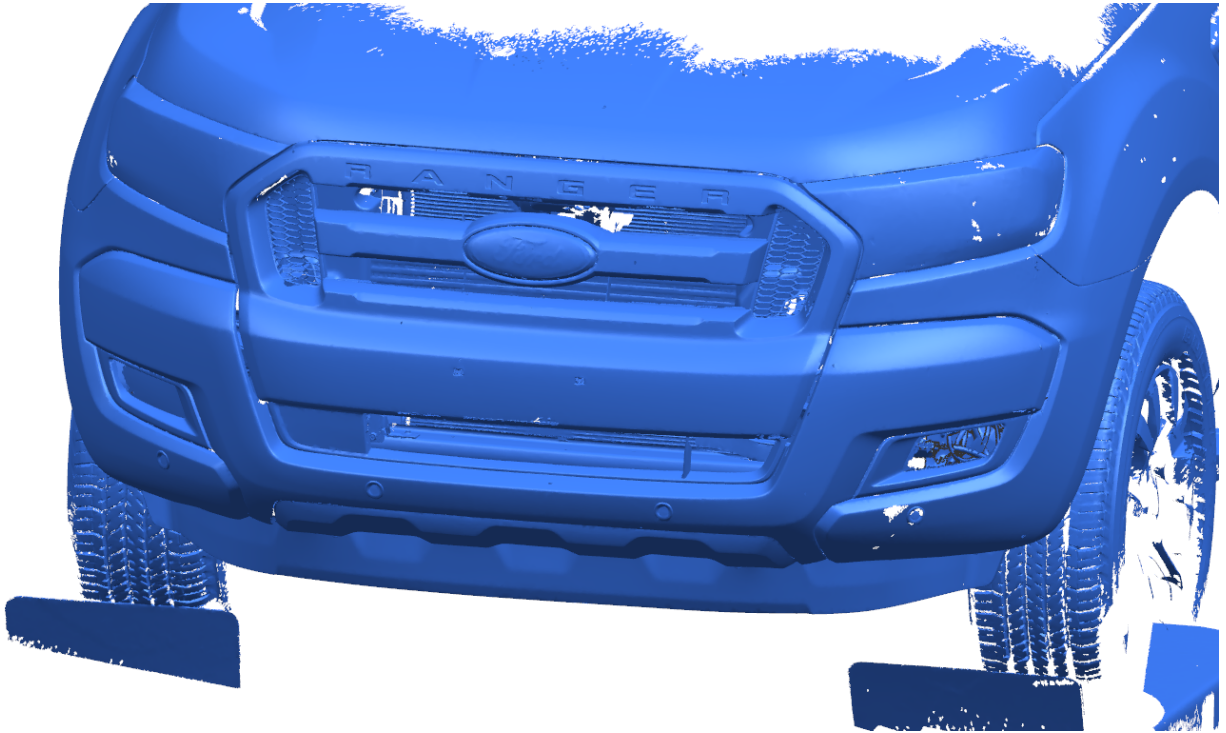
Item	Description	Qty
23	Flange Nut M6	22
24	Hexagonal head bolt M12x40	6
25	Hexagonal head bolt M12x60	2
26	Hexagonal head bolt M6x20	20
27	Hexagonal head bolt M6x16	20
28	hexagon socket screwM6x16	2
29	Hexagonal head bolt M10x35	14
30	Hexagonal head bolt M8x25	4
31	Hexagonal head Nut M6	2
32	Hexagonal head Nut M8x1.25	2
33	Hexagonal head Nut M10x1.5	12
34	D10x30_2 Washer	24
35	D12x37_3 Washer	12
36	D6x18_2 Washer	43
37	D6x12_2 Washer	8
38	D8x24_2 Washer	6
39	Spring Washer D10	16

ROCKARMOR Fitting instruction

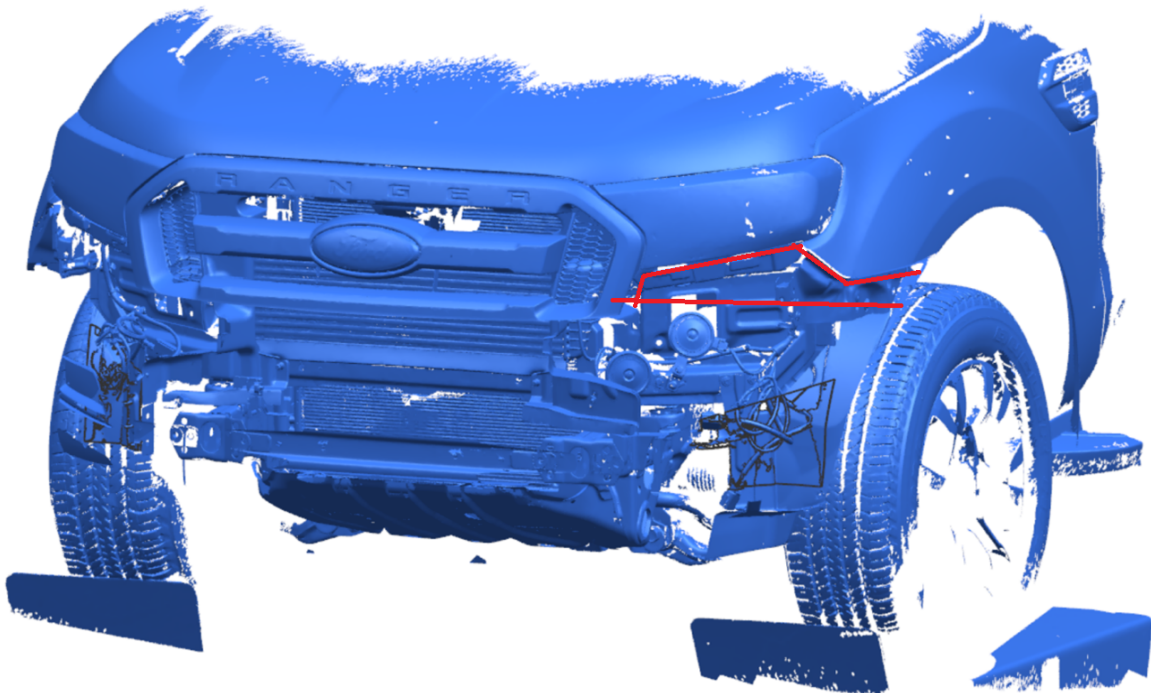
40	Spring Washer D12	10
41	Spring Washer D6	49
42	Spring Washer D8	4
43	Hexagonal head bolt M6x30	7
44	Hexagonal head bolt M12x120	2
45	Hexagonal head bolt M10x25	2
46	Hexagonal head bolt M10x1.25x30	4
48	Hexagonal head Nut M10x1.25	4
47	Hexagonal head Nut M12	2
48	D10x20_2 Washer	6
49	Flange Nut M10x1.25	4
50	Flange Nut M10x1.5	2

ROCKARMOR Fitting instruction

1. Installation Steps:

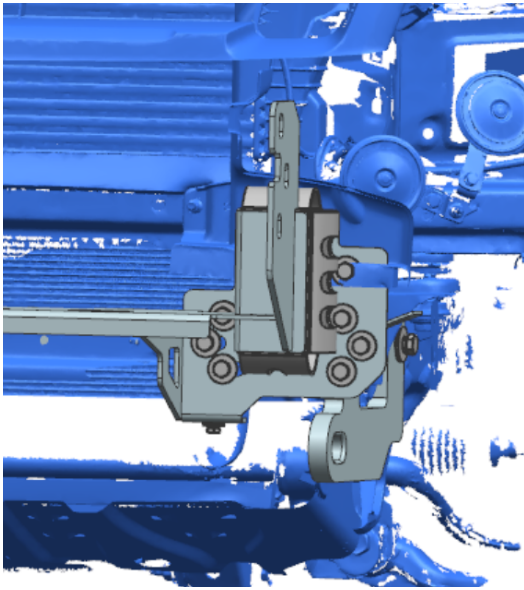
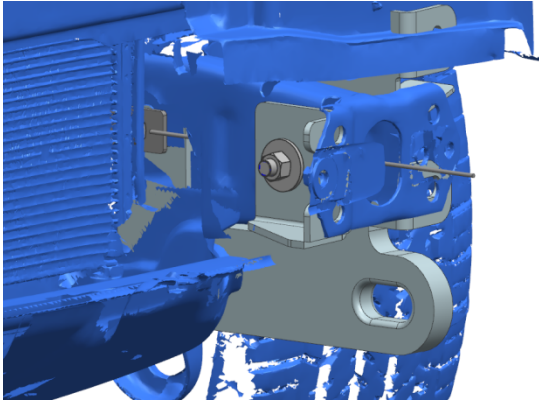


Remove front factory bumper (Take care when unclipping any wiring harnesses)
PXII Model will require a grill cut please see attached below picture for reference.
Paint under the head light and side of guard see below picture for reference.

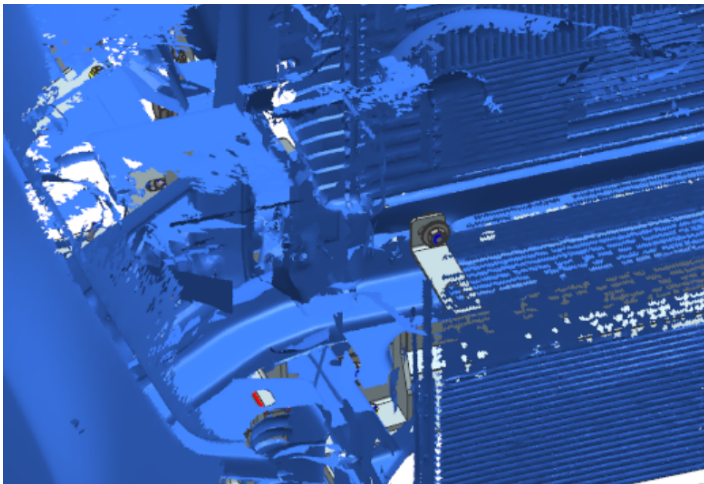


ROCKARMOR Fitting instruction

2. Chassis Mount: item 2&6&11&12&13&23&24(LHS)

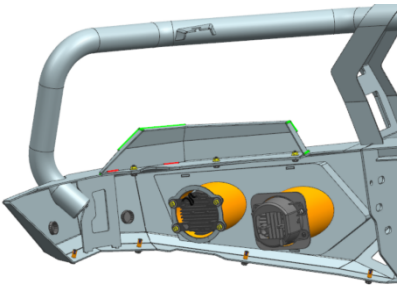


3. Install item 8 (hold the grill)



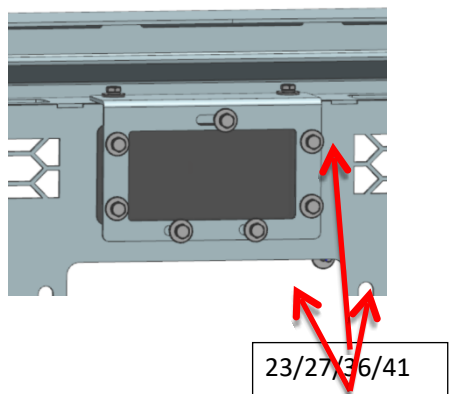
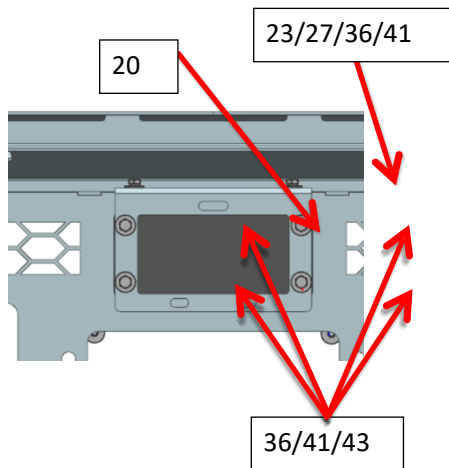
ROCKARMOR Fitting instruction

4. Install item 17&18



ROCKARMOR Fitting instruction

1. Install item 19&20

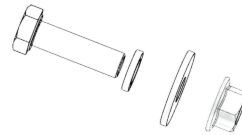


Ranger PXIII Be sure to Install Plastic Board even if Tech Pack is not a feature on the vehicle)

1. Use below bolt kits:

Item 23/27/36/41 (2)

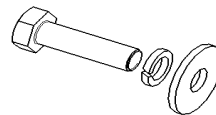
Hexagonal head bolt M6x16 + D6x18_2 Washer + Spring Washer D6



2. Use below bolt kits: (Secure Plastic Board)

Item 36/41/43 (4)

Hexagonal head bolt M6x30+ D6x18_2 Washer + Spring Washer D6



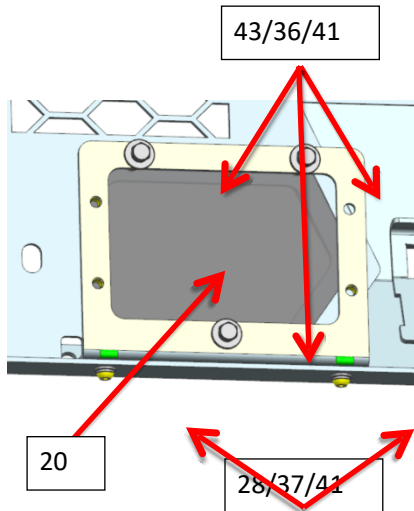
3. Use below bolt kits (Secure Tech Pack to back of the Bull Bar mounting points)

Item 23/27/36/41 (3)

Flange Nut M6 + Hexagonal head bolt M6x16 + D6x18_2 Washer + Spring Washer D6

ROCKARMOR Fitting instruction

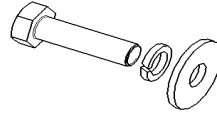
2. Install item 21&22&10



1. Use below bolt kits

Item 43/36/41 (3)

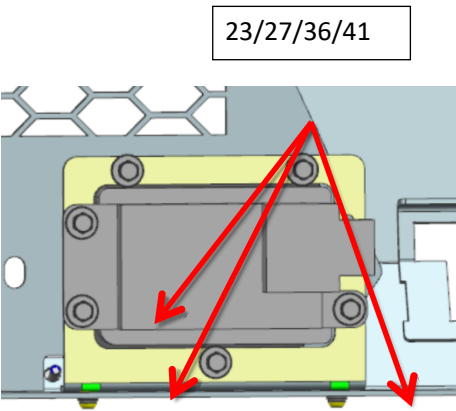
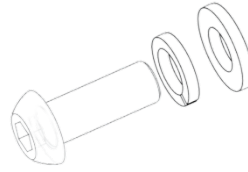
Hexagonal head bolt M6x30 + D6x18_2 Washer + Spring Washer D6



2. Use below bolt kits :

Item 28/37/41 (2)

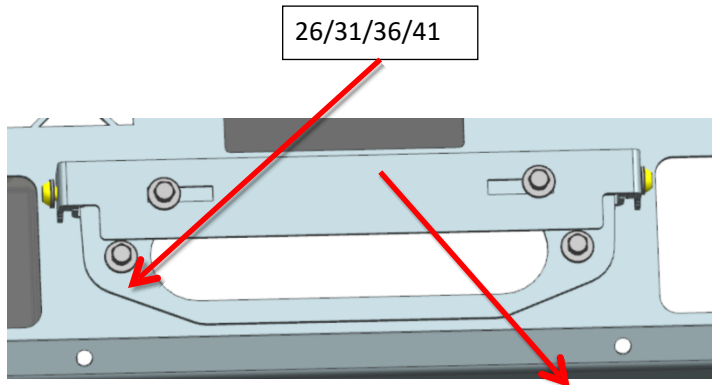
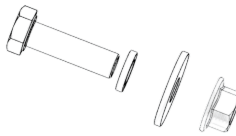
Hexagon socket screw M6x16+ D6x12_2 Washer+Spring Washer D6



3. Use below bolt kits :

Item 23/27/36/41 (3)

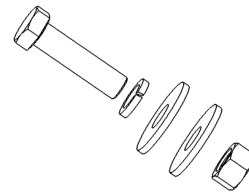
Flange Nut M6+ Hexagonal head bolt M6x16+D6x18_2 Washer+Spring Washer D6



Need use below bolt kits :

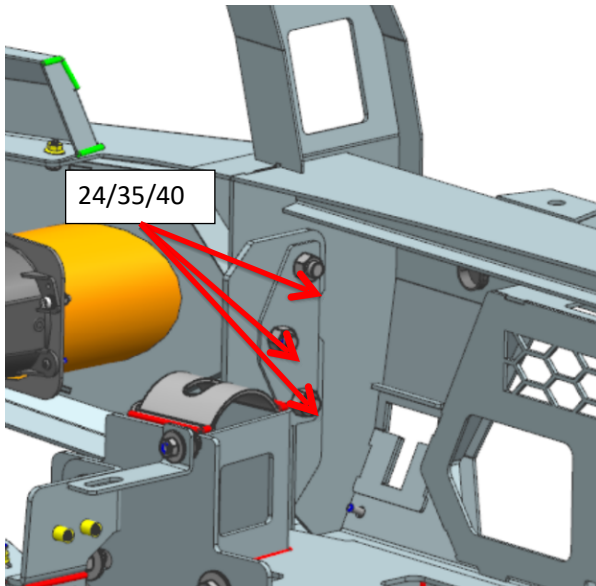
Item 17/21/29/33: (2)

Hexagonal head bolt M6x20 + Hexagonal head Nut M6 + D6x18_2 Washer + Spring Washer D6



ROCKARMOR Fitting instruction

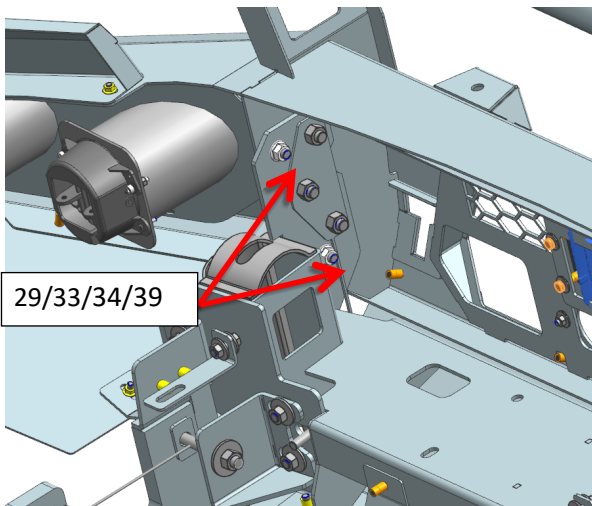
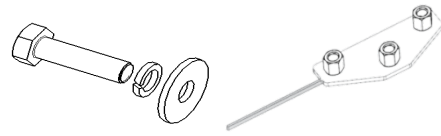
3. Install Item 1&15&16



1. Use below bolt kits:

Item 24/35/40: (6)

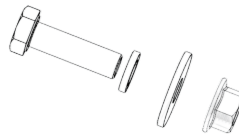
Hexagonal head bolt M12x40 + D12x37_3 Washer + Spring Washer D12



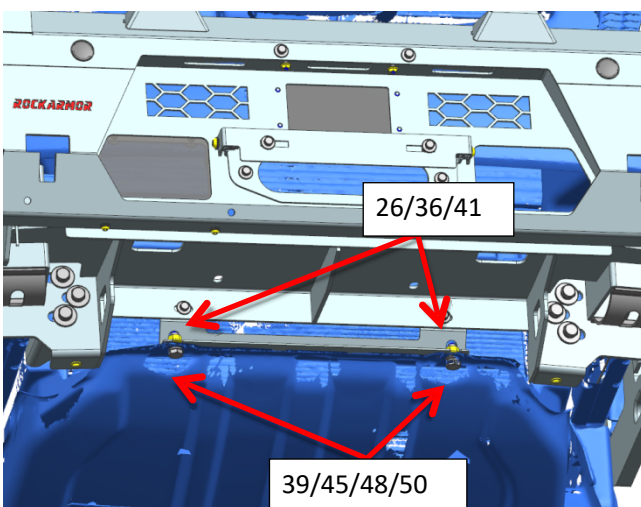
2. Use below bolt kits:

Item 29/33/34/39 (2)

After adjusting the installation gap, use an electric drill to punch the hole. After punching, use this set of bolts to fix it. Hexagonal head bolt M10x1.25x30 + D10x20_2 Washer + Spring Washer D10 + Flange Nut M10x1.25



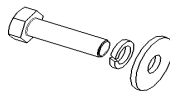
4. Install item 14&OE Bash Plate



1. Use below bolt kits:

Item 26/36/41 (2)

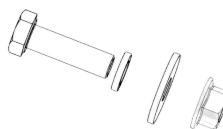
Hexagonal head bolt M6x20 + D6x18_2 Washer + Spring Washer D6



2. Use below bolt kits:

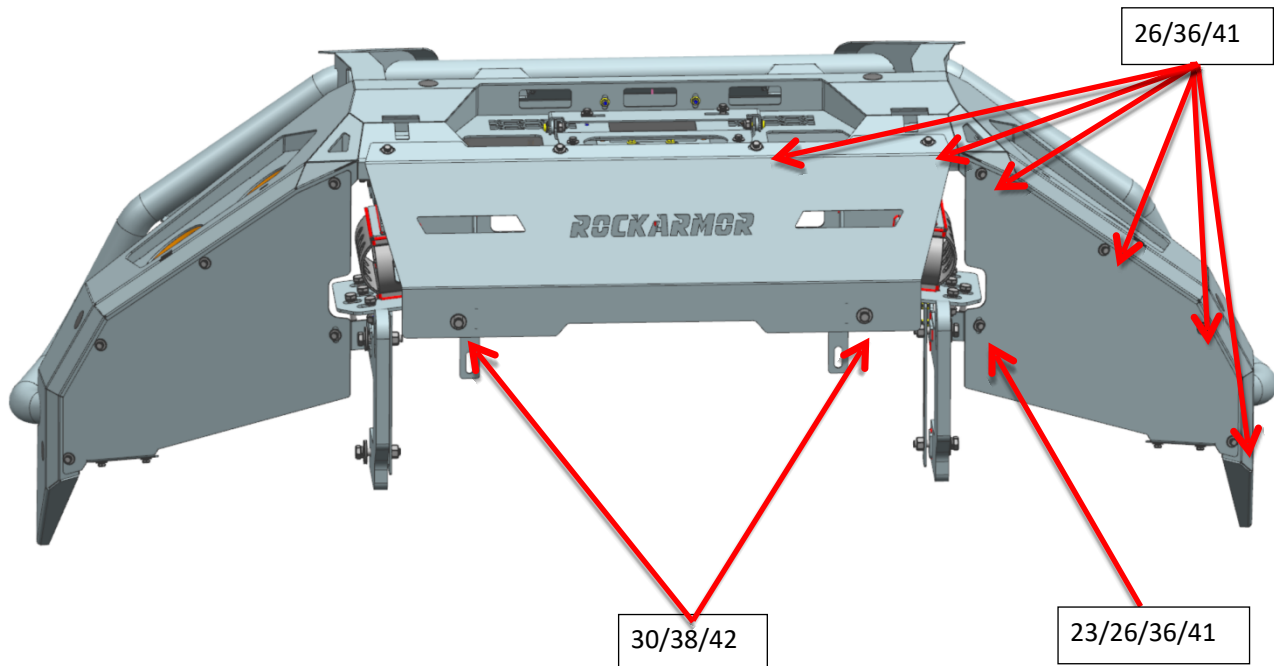
Item 39/45/48/50 (2)

Hexagonal head bolt M10x25 + D10x20_2 Washer + Spring Washer D10 + Flange Nut M10x1.5



5. Install item 3&4&5

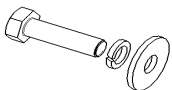
ROCKARMOR Fitting instruction



1. Use below bolt kits :

Item 26/36/41 (14)

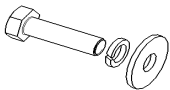
Hexagonal head bolt M6x20+D6x18_2 Washer+Spring Washer D6



2. Use below bolt kits

Item 30/38/42 (2)

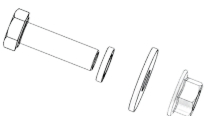
Hexagonal head bolt M8x25+ D8x24_2 Washer +Spring Washer D8



3. Use below bolt kits:

Item 23/26/36/41 (2)

Flange Nut M6+ Hexagonal head bolt M6x20+D6x18_2 Washer+Spring Washer D6



10. Test and make sure that the guard is steadily fixed, fully tighten all hardware

11. Installation is finished, pick up all tools.